

27
SECTION

18
TOWN

05
RANGE

ADAMS COUNTY

COUNTY CORNER NO: 109

ROMPORTOL ID: 41805270000

PUBLIC LAND SURVEY MONUMENT RECORD

TYPE OF MONUMENT: RAILROAD SPIKE
ADAMS COUNTY COORDINATES, NAD 83 (2007)

N. 229398.480

E. 515179.472

ELEVATION- DATUM

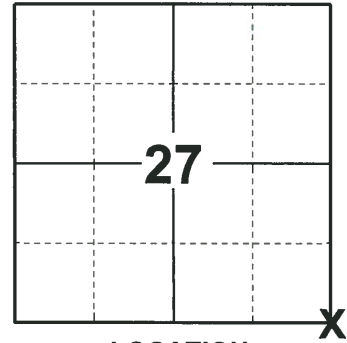
FIELD WORK DATE: 11/19/2018

BASIS FOR MONUMENT LOCATION

1981 - PLS 878 EXCAVATED WITH A BACKHOE AND FOUND NOTHING. CALCULATED THE CORNER LOCATION BY EXTENDING AND DOUBLING THE WEST LINE OF THE NW1/4 OF THIS SECTION. STONES FOUND AT THE W1/4 AND NW CORNERS. SET A HARRISON AT THE CALCULATED LOCATION AND TIED OUT.

2008 - PLS (UNKNOWN) ALL TIES ARE OK, SET RAILROAD SPIKE AT THE CORNER LOCATION.

2018 - PLS 2675 FOUND A RAILROAD SPIKE IN THE ROAD SURFACE, 2 TIES AND 1 WITNESS. DID NOT LOOK FOR A HARRISON SINCE IT WAS REMOVED FOR CONSTRUCTION 5-13-2004 AND A RAILROAD SPIKE WAS SET AFTER CONSTRUCTION 7-29-08. THE MONUMENT AGREES WITH THE EXISTING TIES AND WITNESS. ACCEPTED THE RAILROAD SPIKE AS THE CORNER LOCATION. SET 2 NEW TIES AND MEASURED TO THE TIES AND WITNESS.



LOCATION

(INDICATE CORNER BY "X")

SEAL:



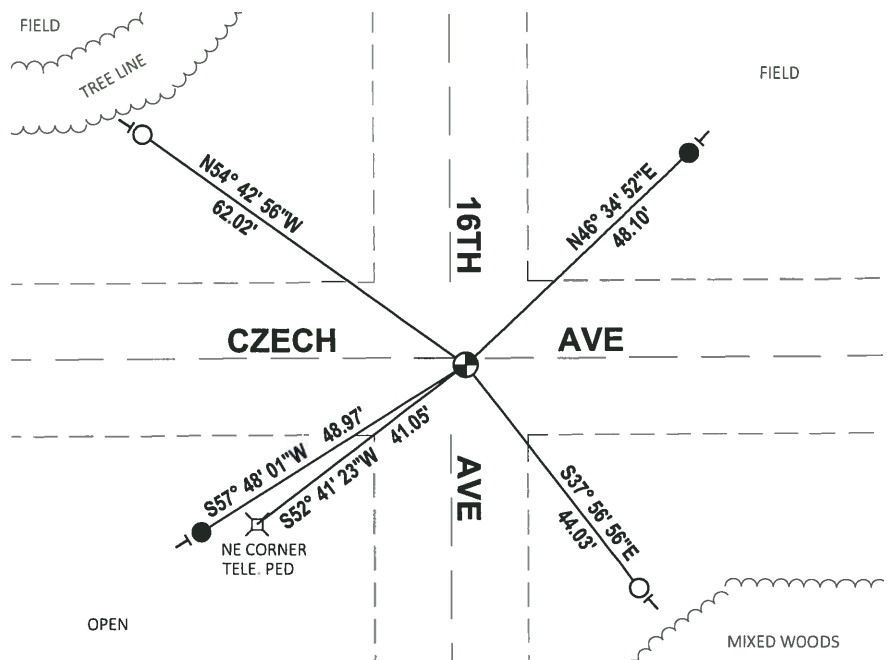
DATA SHOWN HERE ON THIS TIE SHEET IS CORRECT AND COMPLETE TO THE BEST OF MY KNOWLEDGE AND BELIEF.

PROFESSIONAL LAND SURVEYOR

DATE 12/4/2018

- TIE SKETCH

NOTE: THE CORNER FALLS 1'± SOUTH OF THE CENTERLINE OF CZECH AVE AND 2'± EAST OF THE CENTERLINE OF 16TH AVE.

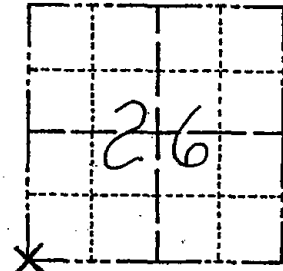


- SET 3/4" x 18" IRON REBAR, 1.50#/FT
- FOUND 3/4" IRON ROD
- ⊕ FOUND RAILROAD SPIKE
- VINYL "T" POST

Government Land Corner Certificate

ADAMS County
 TYPE OF MONUMENT: HARRISON RR SPIKE 7-29-08
 STATE PLANE COORDINATES: N _____
 E _____
 ELEVATION — M.S.L. DATUM: _____
 THETA ANGLE: _____
 FIELD BOOK: 69 PAGE 70
 DRAWN BY: N.J.

CORNER NO. 109
 SECTION 26
 TOWN 18
 RANGE 5



LOCATION
(Indicated by 'X')

BASIS FOR MONUMENT LOCATION

Show info such as: History of corner, with reference to Vol. and pg., dates, surveyor; exact description of monument replaced; if location computed, by taped or EDM traverse; landowner remarks, etc. (Use reverse side if necessary)

Excavated with backhoe, found nothing.
 This corner is set by extending and doubling
 the West line of the NW $\frac{1}{4}$ of this Section.
 Stones found at the W $\frac{1}{4}$ and NW corners.

SEAL:



DATA SHOWN HERE ON
CERTIFIED CORRECT:

6/22/81

Registered Land Surveyor

DATE: Anthony B. Kiedrowski

TIE SKETCH

REMOVED HARRISON FOR ROAD CONSTR. 5-13-04 JG-DA
ALL TIES ARE OK, RR SPIKE SET 7-29-08

Show at least four ties, also fence lines, roads, topo, size and type of witness trees' and if off road - best way to arrive at corner.

