

25  
SECTION

18  
TOWN

05  
RANGE

# ADAMS COUNTY

COUNTY CORNER NO: 112

ROMPORTOL ID: 41805250020

## PUBLIC LAND SURVEY MONUMENT RECORD

TYPE OF MONUMENT: HARRISON  
ADAMS COUNTY COORDINATES, NAD 83 (2007)

N. 229425.326

E. 523092.052

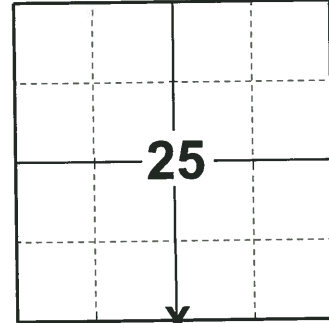
ELEVATION-      DATUM     

FIELD WORK DATE: 11/01/2018

### BASIS FOR MONUMENT LOCATION

1974 - PLS 878 FIELD EVIDENCE YIELDED NO INDICATION AS TO THE LOCATION OF THE ORIGINAL CORNER OR ANY ACCESSORY MONUMENTS. CALCULATED THE CORNER LOCATION EQUIDISTANT AND ON LINE BETWEEN THE SOUTHWEST AND SOUTHEAST SECTION CORNERS. SET A HARRISON MONUMENT AT THE CALCULATED LOCATION AND TIED OUT.

2018 - PLS 2675 FOUND A HARRISON MONUMENT 6" BELOW THE ROAD SURFACE, 1 TIE AND 1 PROPERTY IRON. THE MONUMENT AGREES WITH THE EXISTING TIE. ACCEPTED THE HARRISON MONUMENT AS THE CORNER LOCATION. SET 2 NEW TIES AND MEASURED TO THE TIES AND PROPERTY IRON.



**LOCATION**

(INDICATE CORNER BY "X")

SEAL:



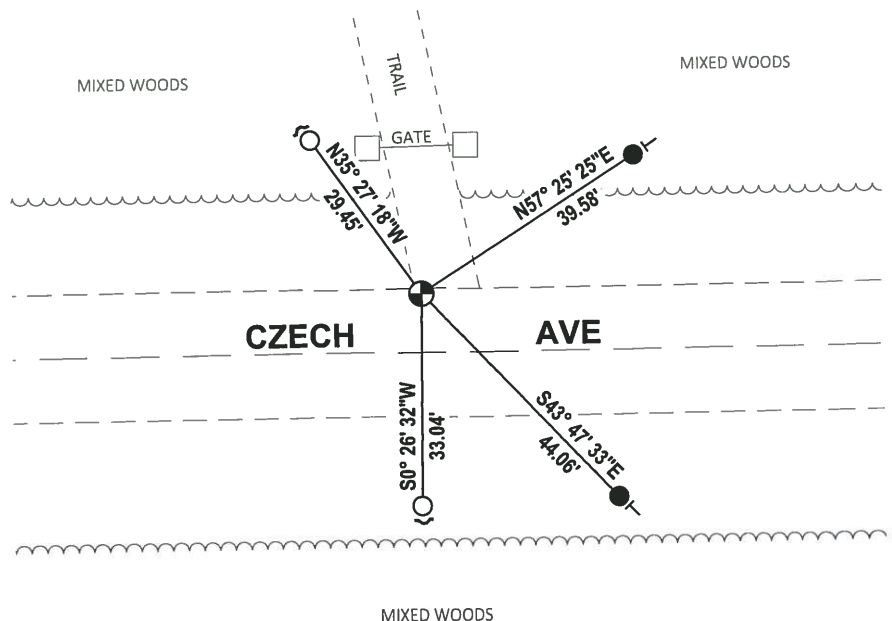
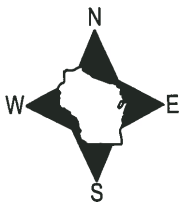
DATA SHOWN HERE ON THIS TIE SHEET IS CORRECT AND COMPLETE TO THE BEST OF MY KNOWLEDGE AND BELIEF.

PROFESSIONAL LAND SURVEYOR

DATE 12/14/2018

### TIE SKETCH

NOTE: THE CORNER FALLS 9'± NORTH OF THE CENTERLINE OF CZECH AVE.



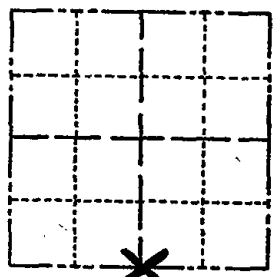
- SET 3/4" x 18" IRON REBAR, 1.50#/FT
- FOUND 3/4" IRON ROD
- ⊕ FOUND HARRISON MONUMENT
- ↘ STEEL FENCE POST
- VINYL "T" POST

ADAMS COUNTY

CORNER NO. 443  
SECTION 25  
TOWN 18  
RANGE 5

Survey Monument Record

TYPE OF MONUMENT: Harrison Monument  
STATE PLANE COORDINATES: N \_\_\_\_\_  
E \_\_\_\_\_  
ELEVATION — M.S.L. DATUM: \_\_\_\_\_  
THETA ANGLE: \_\_\_\_\_  
FIELD BOOK: \_\_\_\_\_ PAGE \_\_\_\_\_



LOCATION  
(Indicated by 'X')

BASIS FOR MONUMENT LOCATION

(Use reverse side if necessary)

Show info such as: History of corner, with reference to Vol. and pg, dates, surveyor; exact description of monument replaced; if location computed, by taped or EDM traverse; landowner remarks, etc.

Field evidence yielded no indication as to the location of the original corner or any accessory monuments.

Located corner equidistant and on line between the Southwest and Southeast section corners.

SEAL:



OK 7-8-78 RK-SS  
3-1-83 GR-SS OK  
8-18-92 BS 1-NEW MON. O.K.  
OK-2-2-98-JG  
OK, 1-29-03-JG  
1-GONE, 4-LEFT, MON. OK 12-11-07- JG-JG

CERTIFIED CORRECT:

*Anthony B. Kiedrowski*  
Registered Land Surveyor

DATE: July 30, 1974

TIE SKETCH

(Show at least four ties)

NOTE:

Ties in trees to nail in disc. Those marked BT have BT scribed in face.

(CHECK FOR SURVEY)

