

25 SECTION    18 TOWN    05 RANGE

# ADAMS COUNTY

COUNTY CORNER NO: 113

ROMPORTOL ID: 418052500

## PUBLIC LAND SURVEY MONUMENT RECORD

TYPE OF MONUMENT: HARRISON  
ADAMS COUNTY COORDINATES, NAD 83 (2007)

N. 229495.948

E. 525735.239

ELEVATION-      DATUM     

FIELD WORK DATE: 12/21/2017

### BASIS FOR MONUMENT LOCATION

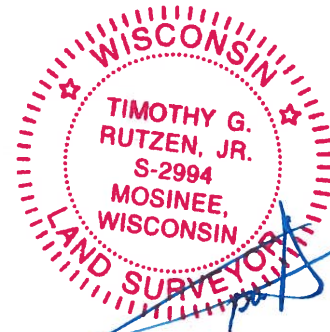
1974 - PLS 878 FIELD INVESTIGATIONS YIELDED NO EVIDENCE AS TO THE LOCATION OF THE ORIGINAL CORNER OR ANY OF THE ACCESSORY MONUMENTS. FOUND RAILROAD SPIKE AND MONUMENTED WITH A HARRISON MONUMENT THE SAME AND TIED OUT. SAID SPIKE USED AS THE SECTION CORNER BY SAM T. MULLEN FOR A PLAT ADJACENT SECTIONS.

2017 - PLS 2994 FOUND A HARRISON MONUMENT 4" BELOW THE ROAD SURFACE AND 1 PROPERTY IRON USED AS A TIE. THE MONUMENT AGREES WITH THE EXISTING TIE. ACCEPTED THE HARRISON MONUMENT AS THE CORNER LOCATION. SET 3 NEW TIES AND MEASURED TO THE TIES.



LOCATION  
(INDICATE CORNER BY "X")

SEAL:



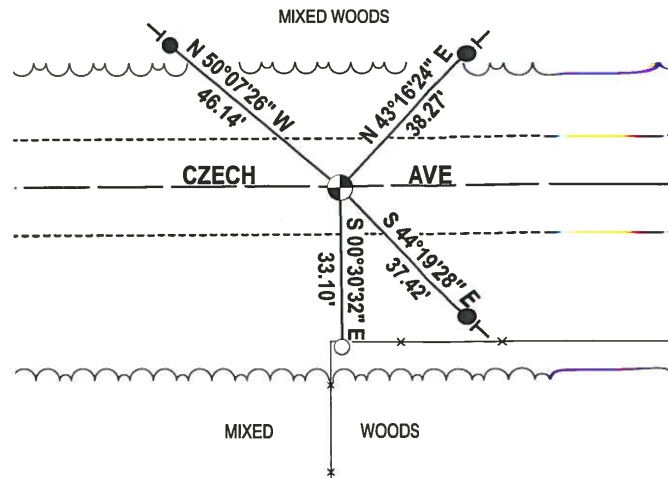
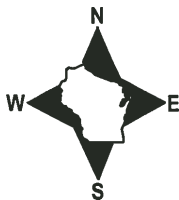
DATA SHOWN HERE ON THIS TIE SHEET IS CORRECT AND COMPLETE TO THE BEST OF MY KNOWLEDGE AND BELIEF.

PROFESSIONAL LAND SURVEYOR

DATE 1-4-18

### - TIE SKETCH -

NOTE: THE CORNER FALLS 0.5± SOUTH OF THE CENTERLINE OF CZECH AVE.



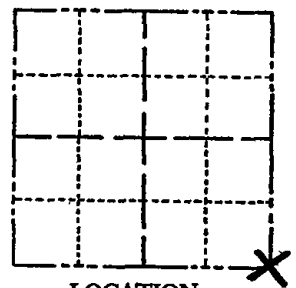
- 3/4" x 18" IRON REBAR SET, 1.50#/FT
- 3/4" IRON ROD FOUND
- ⊙ HARRISON FOUND
- ⊣ VINYL "T" POST

ADAMS COUNTY

Survey Monument Record

TYPE OF MONUMENT: Harrison Monument
STATE PLANE COORDINATES: N
E
ELEVATION - M.S.L. DATUM:
THETA ANGLE:
FIELD BOOK: PAGE

CORNER NO. 442
SECTION 25
TOWN 18
RANGE 6



LOCATION (Indicated by 'X')

BASIS FOR MONUMENT LOCATION

(Use reverse side if necessary)

Show info such as: History of corner, with reference to Vol. and pg, dates, surveyor; exact description of monument replaced; if location computed, by taped or EDM traverse; landowner remarks, etc.

Field investigation yielded no evidence as to the location of the original corner or any of the accessory monuments.

Found railroad spike and monumented same. Said spike used as section corner by Sam T. Mullen for plat in adjacent section.

SEAL:



OK 7-8-78 RK-SS
3-1-83 GR-SS OK
8-18-92 BS OK
1-GONE, 1-NEW 2-2-98 -JG
OK, 1-29-03-JG
1-GONE, MON. OK, 12-11-07-JG-JS

CERTIFIED CORRECT:

Anthony A. Kiedrowski
Registered Land Surveyor

DATE: July 30, 1974

TIE SKETCH

(Show at least four ties)

NOTE:

Ties in trees to nail in disc. Those marked BT have BT scribed in face.

