

31 SECTION 18 TOWN 05 RANGE

ADAMS COUNTY

COUNTY CORNER NO: 122

ROMPORTOL ID: 41805310020

PUBLIC LAND SURVEY MONUMENT RECORD

TYPE OF MONUMENT: HARRISON
 ADAMS COUNTY COORDINATES, NAD 83 (2007)

N. 224147.272

E. 496636.664

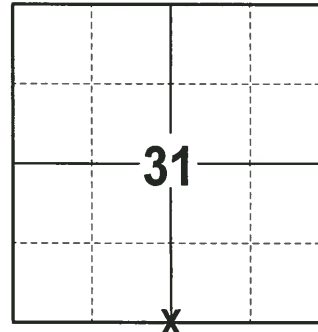
ELEVATION- DATUM

FIELD WORK DATE: 12/18/2017

BASIS FOR MONUMENT LOCATION

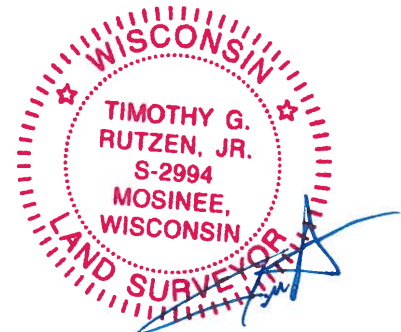
1978 - PLS 878 EXCAVATED WITH A BACKHOE AND FOUND NOTHING. NO RESURVEYS ON RECORD. SET THE CORNER ON A LINE BETWEEN SECTION CORNERS AND IN PROPORTION TO THE ORIGINAL NOTES AND TIED OUT.

2017 - PLS 2994 FOUND A HARRISON MONUMENT 6" BELOW THE ROAD SURFACE AND 1 WITNESS. THE MONUMENT AGREES WITH THE EXISTING WITNESS. ACCEPTED THE HARRISON MONUMENT AS THE CORNER LOCATION. SET 4 NEW TIES AND MEASURED TO THE TIES AND WITNESS.



LOCATION
 (INDICATE CORNER BY "X")

SEAL:



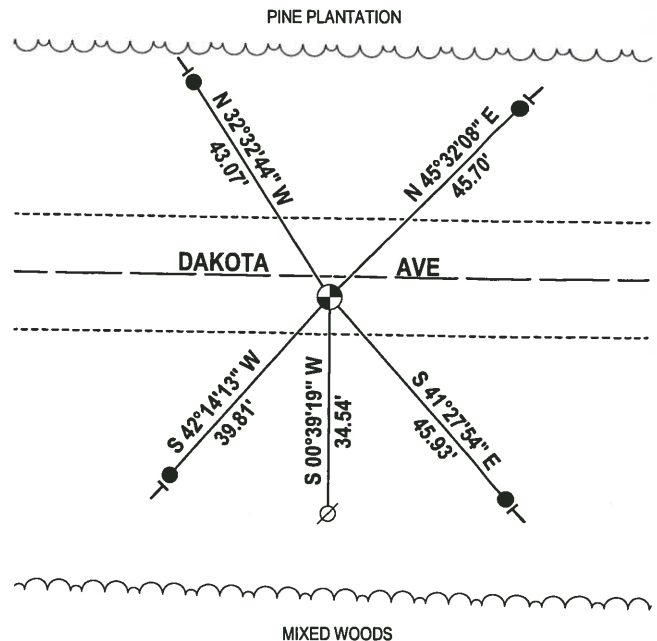
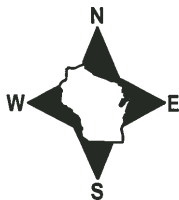
DATA SHOWN HERE ON THIS TIE SHEET IS CORRECT AND COMPLETE TO THE BEST OF MY KNOWLEDGE AND BELIEF.

PROFESSIONAL LAND SURVEYOR

DATE 1-4-18

- TIE SKETCH -

NOTE: THE CORNER FALLS 4± SOUTH OF THE CENTERLINE OF DAKOTA AVE.



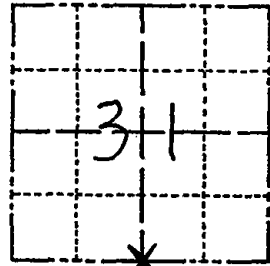
- 3/4" x 18" IRON REBAR SET, 1.50#/FT
- ⊕ HARRISON FOUND
- ⊘ WITNESS POWER POLE FOUND
- VINYL "T" POST

Government Land Corner Certificate

122

ADAMS County
 TYPE OF MONUMENT: HARRISON
 STATE PLANE COORDINATES: N _____
 E _____
 ELEVATION — M.S.L. DATUM: _____
 THETA ANGLE: _____
 FIELD BOOK: _____ PAGE _____
 DRAWN BY: SCOTT SORENSEN

CORNER NO. 122
 SECTION 31
 TOWN 18
 RANGE 5



LOCATION
(Indicated by 'X')

BASIS FOR MONUMENT LOCATION

Show info such as: History of corner, with reference to Vol. and pg., dates, surveyor; exact description of monument replaced; if location computed, by taped or EDM traverse; landowner remarks, etc. (Use reverse side if necessary)

Excavated with backhoe- found nothing.
 No resurveys on record. Set corner on line
 between section corners and in proportion
 to the original notes.

OK 11-17-78 RN-SS

SEAL:



DATA SHOWN HERE ON
CERTIFIED CORRECT:

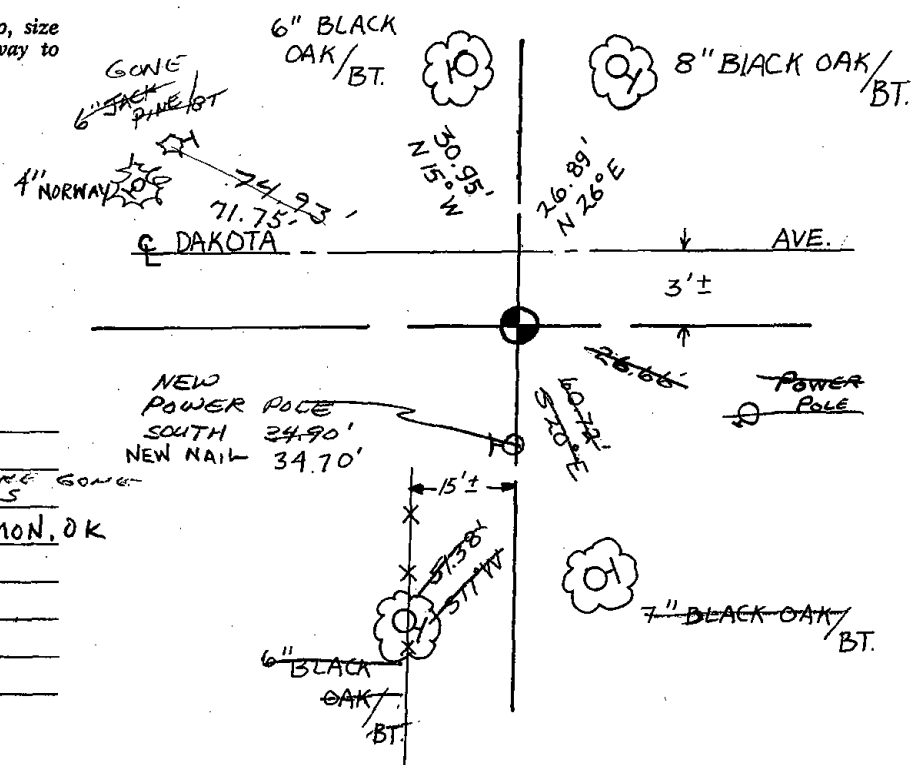
Anthony B. Kiedrowski
Registered Land Surveyor

DATE: 4/24/78

TIE SKETCH

Show at least four ties, also fence lines, roads, topo, size and type of witness trees and if off road - best way to arrive at corner.

Ties are to nail and disc.



MAINTENANCE RECORD

Date	Init.	Remarks
3-2-83	GR-SS	ALL ON SOUTH ARE GONE - NEW TIES
8-20-92	JG	1-TIE GONE, 1-NEW, MON. OK
2-5-98	GR-JG	OK
12-13-07	JG	OK

ADAMS County

TYPE OF MONUMENT: HARRISON

STATE PLANE COORDINATES: N _____
E _____

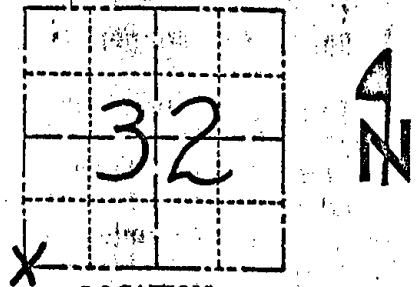
ELEVATION — M.S.L. DATUM: _____

THETA ANGLE: _____

FIELD BOOK: 101 PAGE 75

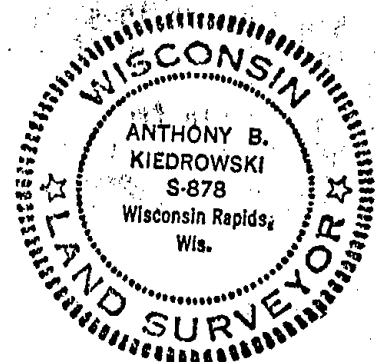
DRAWN BY: R.N.

CORNER NO. 123
SECTION 32
TOWN 18
RANGE 5



LOCATION
(Indicated by 'X')

SEAL:



DATA SHOWN HERE ON
CERTIFIED CORRECT:

Anthony B. Kiedrowski
Registered Land Surveyor.

DATE: 4/27/77

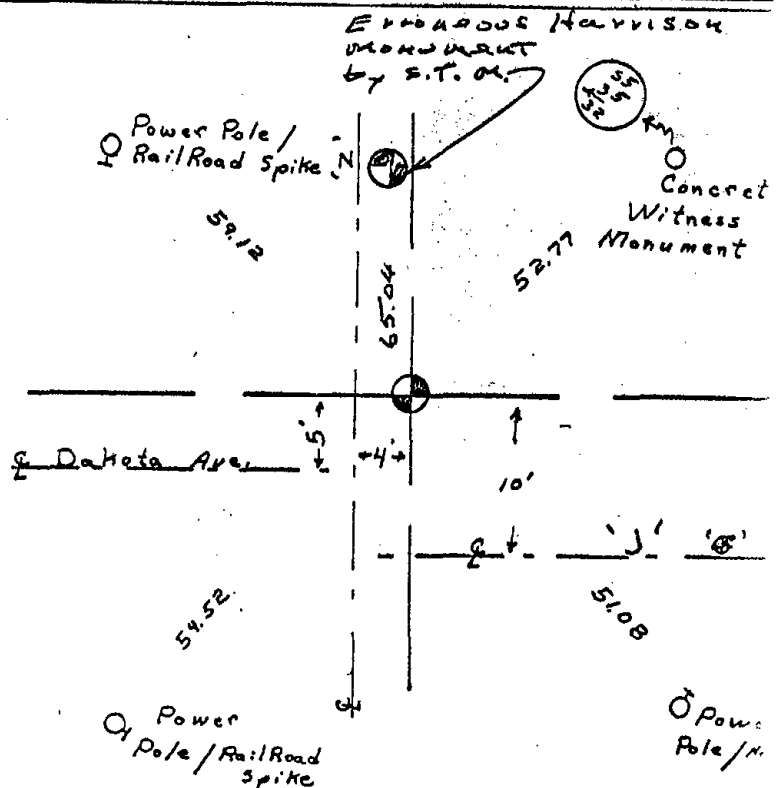
BASIS FOR MONUMENT LOCATION

Show info such as: History of corner, with reference to Vol. and pg., dates, surveyor; exact description of monument replaced; if location computed, by taped or EDM traverse; landowner remarks, etc. (Use reverse side if necessary)

Initially used the Harrison monument set by Sam Mullen from a concrete reference monument. (see sketch) After running a complete traverse of Sec. 32, I was certain that the Harrison monument was in an erroneous location by approximately 66 feet. Using the tie to the corner called for from a cemetery to the south, I excavated with a backhoe. Found nothing. After doing further investigation, such as the tie to the corner from the railroad map, I excavated further for the stone called for by M.C. Smith in his plats of Holmsville. Again found nothing. I then dug for the stone forty corner he called for in the Holm's addition. This I found. I then remeasured and ~~xxx~~ excavated further and immediately found the stone marking the SW corner of Sec. 32. 65.04' south of Mullen's Harrison. (over for more detail)

TIE SKETCH

Show at least four ties, also fence lines, roads, topo, size and type of witness trees' and if off road - best way to arrive at corner.



MAINTENANCE RECORD

Date	Init.	Remarks
11-17-78	PN-SS	OK
3-2-83	GR-SS	OK

Basis for corner (con't)

The stone found was an 8 x 5" sandstone(white) . I broke the top 7" off when I hit it with the backhoe. The remainder of the stone remained in place. The stone in place was witnessed by William Ryman, Adams County Zoning Administrator. I left the bottom part of the stone undisturbed and in place and set a Harrison monument on top.. I put the broken off part of the stone along the north side of the bottom of the Harrison. The stone had a drill hole in it.

See file 32-18-5 for Mr. Ryman's affidavit regarding his witnessing the excavation of the stone.

In his tie from the stone to the corner of Holm's Addition, M.C. Smith has an erroneous dimension of N 10° W 156½ links. I believe this should have been N 10° W 256½ links. This will then get a dimension of 33'± from the stone to the west line of CTH "Z", which is what he obviously intended.