

PUBLIC LAND SURVEY MONUMENT RECORD

TYPE OF MONUMENT: HARRISON
ADAMS COUNTY COORDINATES, NAD 83 (2007)

N. 224100.675

E. 499296.892

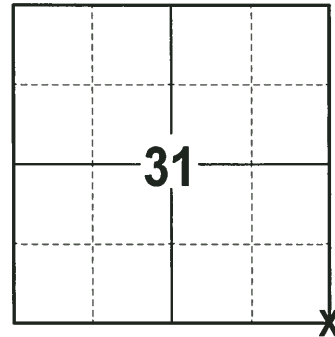
ELEVATION- _____ DATUM _____

FIELD WORK DATE: 12/19/2017

BASIS FOR MONUMENT LOCATION

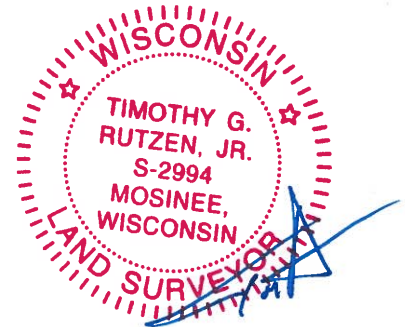
1977 - PLS 878 INITIALLY USED THE HARRISON MONUMENT SET BY SAM MULLEN FROM A CONCRETE REFERENCE MONUMENT. AFTER RUNNING A COMPLETE TRAVERSE OF SECTION 32, HE WAS CERTAIN THAT THE HARRISON MONUMENT WAS IN AN ERRONEOUS LOCATION BY APPROXIMATELY 66 FEET. USED THE TIE TO THE CORNER CALLED FOR FROM THE CEMETERY TO THE SOUTH AND EXCAVATED WITH A BACKHOE AND FOUND NOTHING. AFTER DOING FURTHER INVESTIGATION, SUCH AS THE TIE TO THE CORNER FROM THE RAILROAD MAP. AFTER EXCAVATING FURTHER FOR THE STONE CALLED FOR BY M.C. SMITH IN HIS PLATS OF HOLMSVILLIE AND NOTHING WAS FOUND. AFTER THAT, THE STONE FORTY CORNER HE CALLED FOR IN HOLM'S ADDITION WAS FOUND. AFTER RE-MEASURING AND EXCAVATING FURTHER. THE STONE MARKING THE SW CORNER OF SECTION 32, 65.04' SOUTH OF MULLEN'S HARRISON WAS FOUND. THE STONE FOUND WAS AN 8"X5" SANDSTONE (WHITE). THE TOP 7" OF THE STONE WAS BROKEN OFF WHEN IT WAS HIT WITH THE BACKHOE. THE REMAINDER OF THE STONE REMAINED IN PLACE. THE STONE IN PLACE WAS WITNESSED BY WILLIAM RYMAN, ADAMS COUNTY ZONING ADMINISTRATOR. THE BOTTOM PART OF THE STONE WAS LEFT UNDISTURBED AND IN PLACE. A HARRISON MONUMENT WAS SET ON TOP OF THE STONE. THE BROKEN PART OF THE STONE WAS PUT ALONG THE NORTH SIDE OF THE BOTTOM OF THE HARRISON. THE STONE HAD A DRILL HOLE IN IT. SEE FILE 32-18-5 FOR MR. RYMAN'S AFFIDAVIT REGARDING HIM WITNESSING THE EXCAVATION OF THE STONE. IN THE TIE FROM THE STONE TO THE CORNER OF HOLM'S ADDITION, M.C. SMITH HAS AN ERRONEOUS DIMENSION OF N10°W 156.5 LINKS. I BELIEVE THIS SHOULD HAVE BEEN N10°W 256.5 LINKS. THIS WOULD THEN HAVE A DIMENSION OF 33± FROM THE STONE TO THE WEST LINE OF CTH Z, WHICH IS WHAT WAS OBVIOUSLY INTENDED. RE-TIED CORNER.

2017 - PLS 2994 FOUND A HARRISON MONUMENT 4" BELOW THE ROAD SURFACE, 2 TIES AND 2 WITNESSES. THE MONUMENT AGREES WITH THE EXISTING TIES AND WITNESSES. ACCEPTED THE HARRISON MONUMENT AS THE CORNER LOCATION. SET 3 NEW TIES AND MEASURED TO THE TIES AND WITNESSES.



LOCATION
(INDICATE CORNER BY "X")

SEAL:



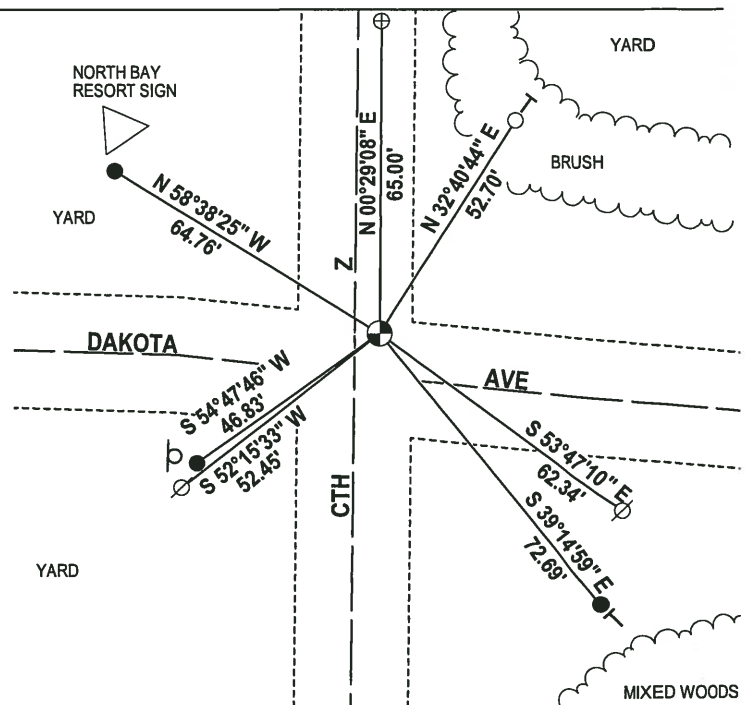
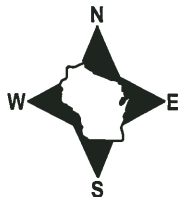
DATA SHOWN HERE ON THIS TIE SHEET IS CORRECT AND COMPLETE TO THE BEST OF MY KNOWLEDGE AND BELIEF.

PROFESSIONAL LAND SURVEYOR

DATE 1-4-18

- TIE SKETCH

NOTE: THE CORNER FALLS 9± NORTH OF THE CENTERLINE OF DAKOTA AVE AND 5± EAST OF THE CENTERLINE OF CTH Z.



- 3/4" x 18" IRON REBAR SET, 1.50#/FT
- ADAMS CO. ALUMINUM CAP IN CONCRETE FOUND
- ⊕ ERRONEOUS HARRISON
- ⊙ HARRISON FOUND
- ⊗ WITNESS POWER POLE FOUND
- ⊔ STOP SIGN
- └ VINYL "T" POST

Government Land Corner Certificate

ADAMS County

TYPE OF MONUMENT: HARRISON

STATE PLANE COORDINATES: N _____

E _____

ELEVATION — M.S.L. DATUM: _____

THETA ANGLE: _____

FIELD BOOK: 101 PAGE 75

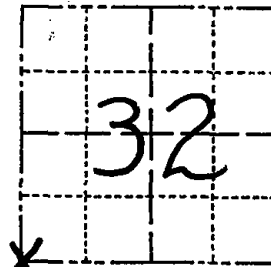
DRAWN BY: R.V.

CORNER NO. 3

SECTION 32

TOWN 18

RANGE 5



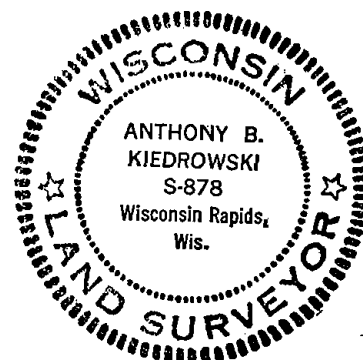
LOCATION
(Indicated by 'X')

BASIS FOR MONUMENT LOCATION

Show info such as: History of corner, with reference to Vol. and pg., dates, surveyor; exact description of monument replaced; if location computed, by taped or EDM traverse; landowner remarks, etc. (Use reverse side if necessary)

Initially used the Harrison monument set by Sam Mullen from a concrete reference monument. (see sketch) After running a complete traverse of Sec. 32, I was certain that the Harrison monument was in an erroneous location by approximately 66 feet. Using the tie to the corner called for from a cemetery to the south, I excavated with a backhoe. Found nothing. After doing further investigation, such as the tie to the corner from the railroad map, I excavated further for the stone called for by M.C. Smith in his plats of Holmsville. Again found nothing. I then dug for the stone forty corner he called for in the Holm's addition. This I found. I then remeasured and ~~xxx~~ excavated further and immediately found the stone marking the SW corner of Sec. 32. 65.04' south of Mullen's Harrison. (over for more detail)

SEAL:



DATA SHOWN HERE ON
CERTIFIED CORRECT:

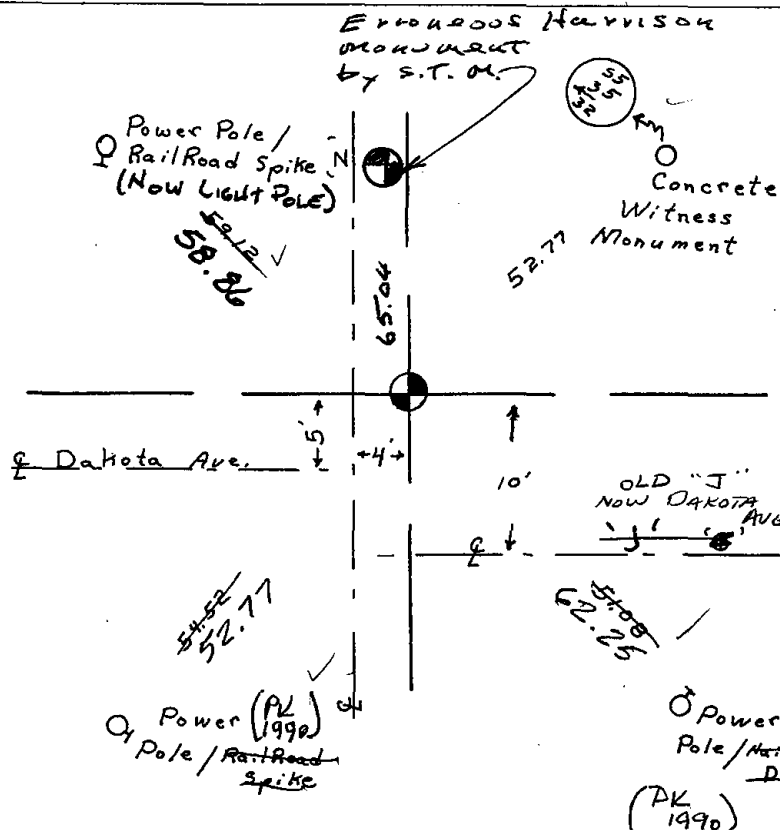
Anthony B. Kiedrowski
Registered Land Surveyor

DATE: 4/27/77

TIE SKETCH

Show at least four ties, also fence lines, roads, topo, size and type of witness trees' and if off road - best way to arrive at corner.

OK 11-17-78 R.V.S.S.
OK 5/29/85 D.K.



MAINTENANCE RECORD

Date	Init.	Remarks
1-30-90	K.S.S.	3 New
8-17-94	J.S.S.	OK
11-27-00	J.S.S.	OK
2-15-05	DA/JG	OK

Basis for corner (con't)

The stone found was an 8 x 5" sandstone(white) . I broke the top 7" off when I hit it with the backhoe. The remainder of the stone remained in place. The stone in place was witnessed by William Ryman, Adams County Zoning Administrator. I left the bottom part of the stone undisturbed and in place and set a Harrison monument on top.. I put the broken off part of the stone along the north side of the bottom of the Harrison. The stone had a drill hole in it.

See file 32-18-5 for Mr. Ryman's affidavit regarding his witnessing the excavation of the stone.

In his tie from the stone to the corner of Holm's Addition, M.C.Smith has an erroneous dimension of N 10° W 156½ links. I believe this should have been N 10° W 256½ links. This will then get a dimension of 33'± from the stone to the west line of CTH "Z", which is what he obviously intended.