

PUBLIC LAND SURVEY MONUMENT RECORD

TYPE OF MONUMENT: HARRISON (BROKEN-TOP)
 ADAMS COUNTY COORDINATES, NAD 83 (2007)

N. 224127.771

E. 515175.341

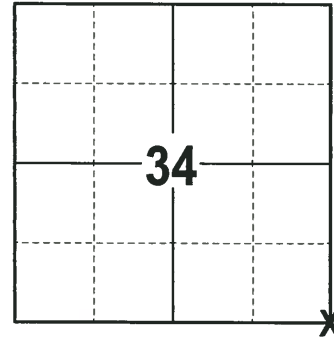
ELEVATION- _____ DATUM _____

FIELD WORK DATE: 12/20/2017

BASIS FOR MONUMENT LOCATION

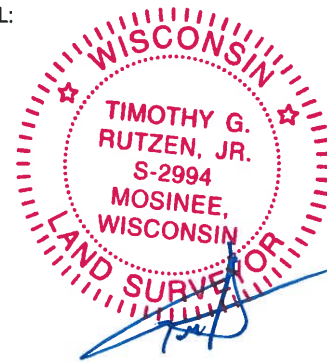
1974 - PLS 881 LOCATED AN OLD DOWN WOOD POST BY E.D.M. TRAVERSE THAT FITS IN ALL DIRECTIONS. SHOWED THE CORNER TO THE CO. SURVEYOR (KIEDROWSKI) WHO WAS IN AGREEMENT OF THE CORNER LOCATION. SET A HARRISON MONUMENT AT POST LOCATION AND TIED OUT.

2017 - PLS 2994 FOUND A HARRISON MONUMENT WITH A BROKEN-TOP 4" BELOW THE GROUND SURFACE AND 1 WITNESS TREE. THE MONUMENT AGREES WITH THE EXISTING WITNESS TREE. ACCEPTED THE HARRISON MONUMENT WITH A BROKEN-TOP AS THE CORNER LOCATION. SET 4 NEW TIES AND MEASURED TO THE TIES AND WITNESS TREE.



LOCATION
(INDICATE CORNER BY "X")

SEAL:



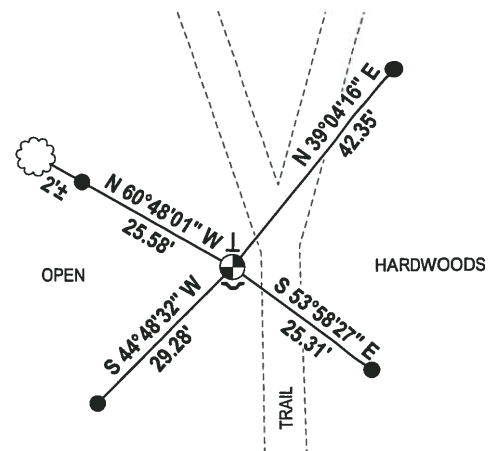
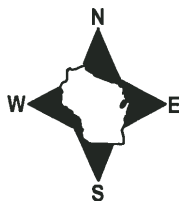
DATA SHOWN HERE ON THIS TIE SHEET IS CORRECT AND COMPLETE TO THE BEST OF MY KNOWLEDGE AND BELIEF.

PROFESSIONAL LAND SURVEYOR

DATE 1-4-18

- TIE SKETCH

NOTE: THE CORNER FALLS 10'± WEST OF THE CENTERLINE OF THE TRAIL.



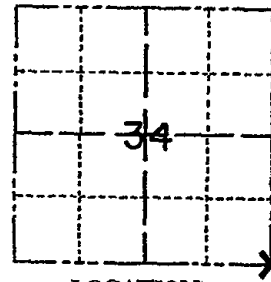
- 3/4" x 18" IRON REBAR SET, 1.50#/FT
- ⊙ HARRISON (BROKEN-TOP) FOUND
- ✓ STEEL FENCE POST
- VINYL "T" POST
- ☁ WITNESS TREE FOUND

ADAMS COUNTY

Survey Monument Record

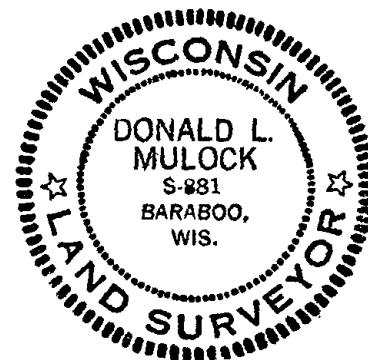
TYPE OF MONUMENT: HARRISON
 STATE PLANE COORDINATES: N. 2000.00
 ASSUMED E. 5400.00
 ELEVATION — M.S.L. DATUM: _____
 THETA ANGLE: _____
 FIELD BOOK: 440 ADAMS PAGE -1-

CORNER NO. 470
 SECTION 34
 TOWN 18 N
 RANGE 5 E



LOCATION
(Indicated by 'X')

SEAL:



BASIS FOR MONUMENT LOCATION

(Use reverse side if necessary)

Show info such as: History of corner, with reference to Vol. and pg, dates, surveyor; exact description of monument replaced; if location computed, by taped or EDM traverse; landowner remarks, etc.

WE FOUND OLD WOOD POST (DOWN) THAT FITS IN ALL DIRECTIONS. SHOWED CORNER TO CO. SURVEYOR (KIEDROWSKI) WHO WAS IN AGREEMENT. SET HARRISON MONUMENT 3-5-74 WITH TIES (SEE BELOW).

LOCATION BY EDM TRAVERSE.

CORNER O.E. 10-31-75 D.M.-S.E.
 Nails and facing same
 COR OK - FALL 1978
 3-25-83 GR-55 - 2 NEW TIES

CERTIFIED CORRECT:

Donald L. Mulock
 Registered Land Surveyor

DATE: MARCH 7-1974

TIE SKETCH

(Show at least four ties)

OK, 1-29-03 - JG
 OK, 12-11-07 - JG-Is

MON. OK - 9-8-92 - JG

1-GONE, 1-NEW, TOP OF MON. BROKEN OFF, 2-4-78 - JG

