

35 SECTION    18 TOWN    05 RANGE

# ADAMS COUNTY

COUNTY CORNER NO: 130  
ROMPORTOL ID: 41805350020

## PUBLIC LAND SURVEY MONUMENT RECORD

TYPE OF MONUMENT: HARRISON  
ADAMS COUNTY COORDINATES, NAD 83 (2007)

N. 224137.546

E. 517834.625

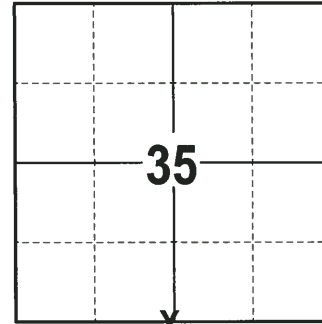
ELEVATION-      DATUM     

FIELD WORK DATE: 12/20/2017

### BASIS FOR MONUMENT LOCATION

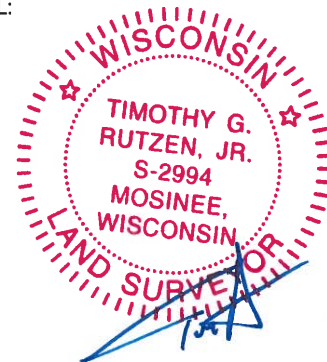
1997 - PLS 1199 STATES HE MOVED THIS HARRISON MONUMENT ALSO BEING THE PREVIOUS LOCATION OF THE 3/4" X 24" IRON ROD TO A NEW LOCATION TO FIT THE CALLS OF THE SECTION 35 SUMMARY ON FILE IN THE ADAMS COUNTY SURVEYOR'S OFFICE. THIS MOVE WAS DISCUSSED AND AGREED TO BY THE ADAMS COUNTY SURVEYOR. NOTE: MANY SURVEYS AND MAPS OF RECORD WOULD BE IN ERROR IF THIS MONUMENT WAS NOT PLACED AT THIS NEW AND TRUE LOCATION. CORNER WAS MOVED AND RE-TIED.

2017 - PLS 2994 FOUND A HARRISON MONUMENT FLUSH WITH THE GROUND SURFACE AND 1 WITNESS TREE. THE MONUMENT AGREES WITH THE EXISTING WITNESS TREE. ACCEPTED THE HARRISON MONUMENT AS THE CORNER LOCATION. SET 4 NEW TIES AND MEASURED TO THE TIES AND WITNESS TREE.



**LOCATION**  
(INDICATE CORNER BY "X")

SEAL:

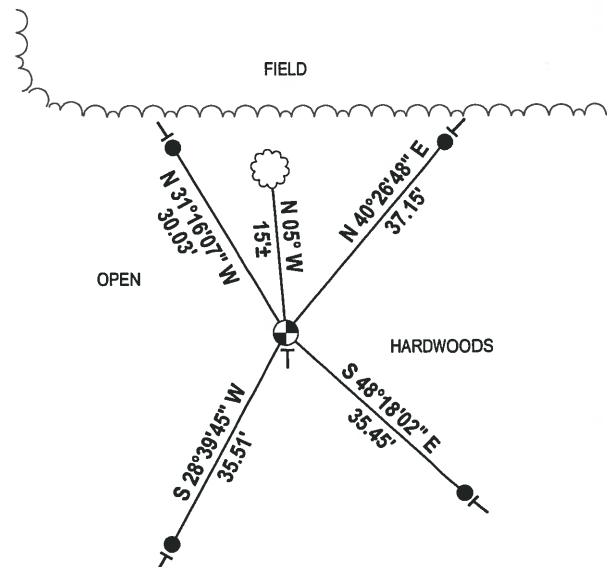
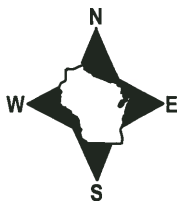


DATA SHOWN HERE ON THIS TIE SHEET IS CORRECT AND COMPLETE TO THE BEST OF MY KNOWLEDGE AND BELIEF.

PROFESSIONAL LAND SURVEYOR

DATE 1-4-18

### - TIE SKETCH



- 3/4" x 18" IRON REBAR SET, 1.50#/FT
- ⊙ HARRISON FOUND
- └ VINYL "T" POST
- ☁ WITNESS TREE FOUND

Survey Monument Record

TYPE OF MONUMENT: HARRISON

STATE PLANE COORDINATES: N \_\_\_\_\_

E \_\_\_\_\_

ELEVATION — M.S.L. DATUM: \_\_\_\_\_

THETA ANGLE: \_\_\_\_\_

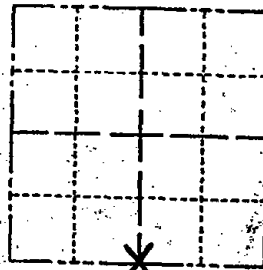
FIELD BOOK: \_\_\_\_\_ PAGE \_\_\_\_\_

CORNER NO. \_\_\_\_\_

SECTION 35

TOWN 18

RANGE 5



LOCATION (Indicated by 'X')



SEAL:



BASIS FOR MONUMENT LOCATION

(Use reverse side if necessary)

Show info such as: History of corner, with reference to Vol. and pg. dates, surveyor; exact description of monument replaced; if location computed, by taped or EDM traverse; landowner remarks, etc.

This Harrison marker has been moved to this location from the 3/4" x 24" iron rod location to fit the calls of the section summary for Section 35 on file in the Adams County Surveyor's office.

This move has been discussed with and OK'ed by the Adams County Surveyor. Many survey's and maps of record would be in error if this monument was not placed at this new and true location.

CERTIFIED CORRECT:

*Patrick A. Carroll*

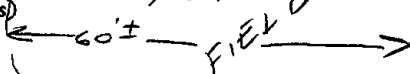
Registered Land Surveyor

DATE: May 27, 1997

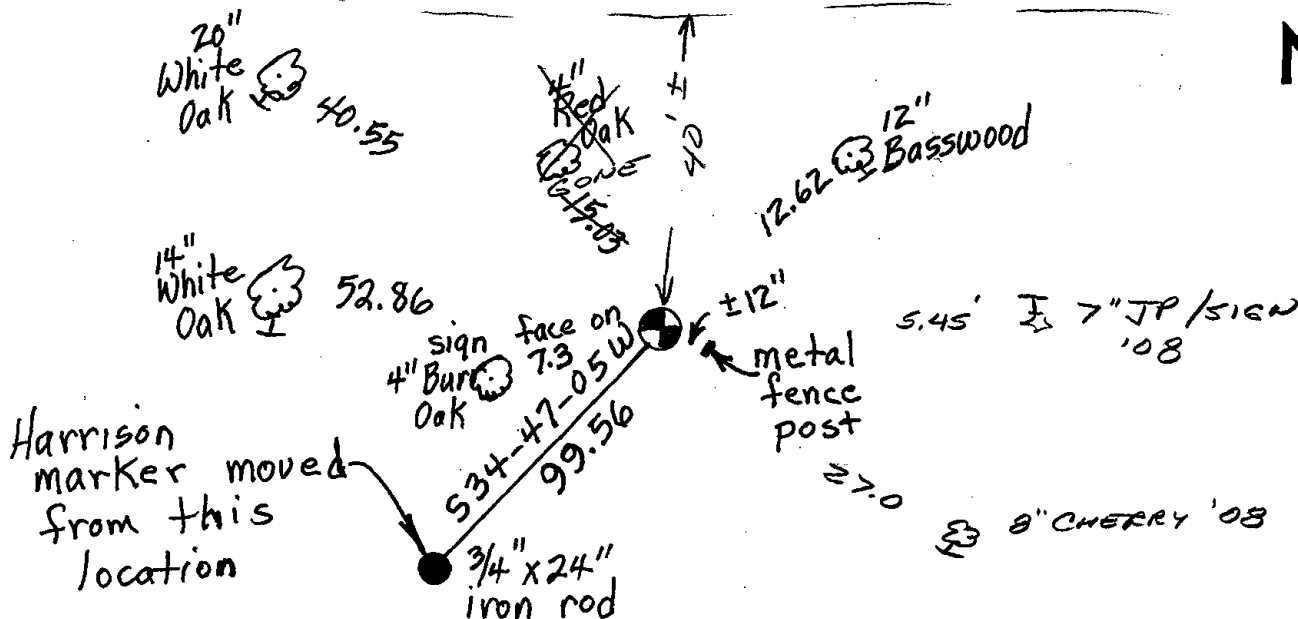
TIE SKETCH

OK, 2-17-98 - JG-SS  
9-29-02 SS

(Show at least four ties)



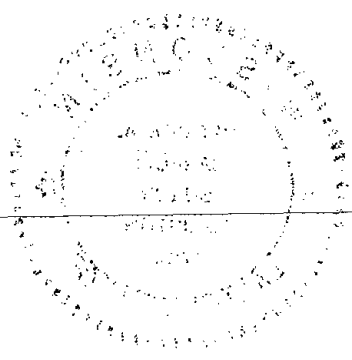
CARROLL TIES ARE BRIDGE SPIKES



100-100000-100000

100-100000-100000

X



100-100000-100000

