

PUBLIC LAND SURVEY MONUMENT RECORD

TYPE OF MONUMENT: HARRISON
ADAMS COUNTY COORDINATES, NAD 83 (2007)

N. 255789.320

E. 525542.528

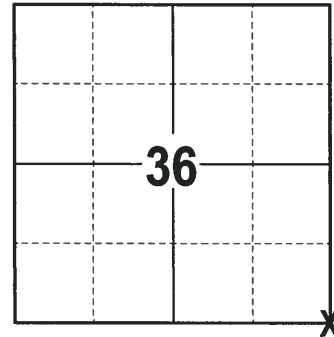
ELEVATION- - - DATUM - -

FIELD WORK DATE: 01/12/2018

BASIS FOR MONUMENT LOCATION

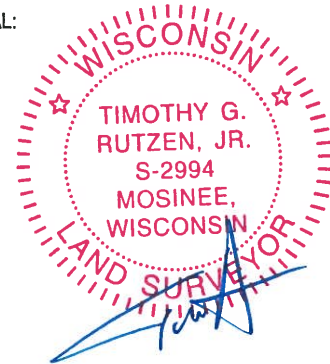
2013 - PLS 1478 RE-DRAFTED PRIOR TIE SHEET BY ATHONY B. KIEDROWSKI FROM 1978. KIEDROWSKI RAN EDM TRAVERSE OF SECTION 6 AND FOUND A 1/2" GALVANIZED IRON PIPE AT A FENCE CORNER. AFTER A CAREFUL EXAMINATION OF PREVIOUS SURVEY INFORMATION IN THE AREA AND POSSESSION THE PIPE WAS ACCEPTED AS CORRECT AND A HARRISON MONUMENT WAS SET AND THE CORNER WAS TIED OUT.

2018 - PLS 2994 FOUND A HARRISON MONUMENT FLUSH WITH THE GROUND SURFACE AND 1 WITNESS. THE MONUMENT AGREES WITH THE EXISTING WITNESS. ACCEPTED THE HARRISON MONUMENT AS THE CORNER LOCATION. SET 4 NEW TIES AND MEASURED TO THE TIES AND WITNESS.



LOCATION
(INDICATE CORNER BY "X")

SEAL:



DATA SHOWN HERE ON THIS TIE SHEET IS CORRECT AND COMPLETE TO THE BEST OF MY KNOWLEDGE AND BELIEF.

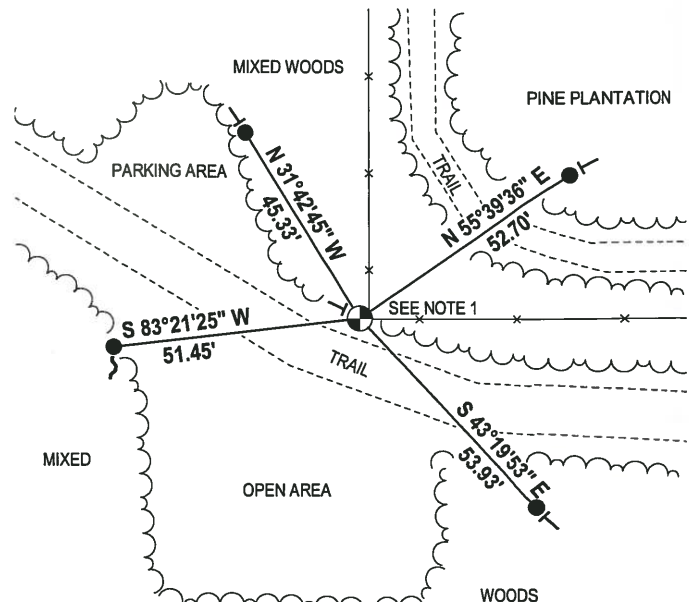
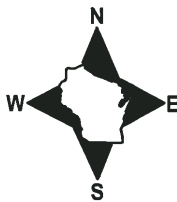
PROFESSIONAL LAND SURVEYOR

DATE 3-1-18

- TIE SKETCH -

NOTE 1: THE FENCE CORNER FALLS N 90° E, 1.96' FROM THE CORNER LOCATION.

NOTE 2: THE CORNER FALLS 32± SOUTH-WEST OF THE CENTERLINE OF THE TRAIL.



- 3/4" x 18" IRON REBAR SET, 1.50#/FT
- ⊕ HARRISON FOUND
- ✓ WOODEN POST W/NO TRESPASSING SIGN
- VINYL "T" POST

