

31 SECTION    19 TOWN    06 RANGE

# ADAMS COUNTY

COUNTY CORNER NO: 123

ROMPORTOL ID: 41906310000

## PUBLIC LAND SURVEY MONUMENT RECORD

TYPE OF MONUMENT: HARRISON (BROKEN-TOP)  
ADAMS COUNTY COORDINATES, NAD 83 (2007)

N. 255904.679

E. 530874.786

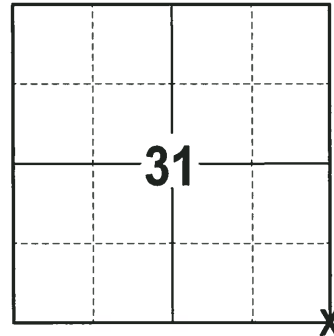
ELEVATION-      DATUM     

FIELD WORK DATE: 01/23/2018

### BASIS FOR MONUMENT LOCATION

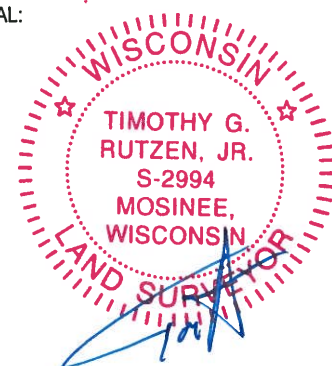
1972 - PLS 878 FOUND AN OLD CAR AXLE HOUSING. LANDOWNERS IN THE AREA HAD ACCEPTED THIS AS THE MARKING TO THE SECTION CORNERS. LOCATION VERIFIED BY A PARTIAL TRAVERSE OF SECTION 6. SET A HARRISON MONUMENT AT THE AXLE LOCATION AND TIED OUT.

2018 - PLS 2994 FOUND A HARRISON MONUMENT WITH A BROKEN-TOP 4" BELOW THE GROUND SURFACE. FOUND NO EVIDENCE OF ANY OF THE WITNESSES. ACCEPTED THE HARRISON MONUMENT WITH A BROKEN-TOP AS THE BEST EVIDENCE OF THE CORNER LOCATION. SET 4 NEW TIES AND MEASURED TO THE TIES.



**LOCATION**  
(INDICATE CORNER BY "X")

SEAL:



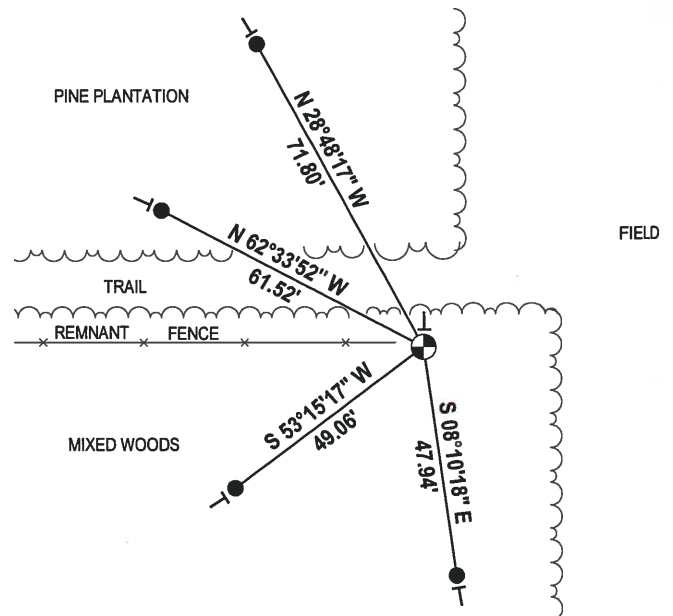
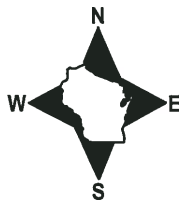
DATA SHOWN HERE ON THIS TIE SHEET IS CORRECT AND COMPLETE TO THE BEST OF MY KNOWLEDGE AND BELIEF.

PROFESSIONAL LAND SURVEYOR

DATE 3-1-18

### - TIE SKETCH -

NOTE: THE CORNER FALLS 12± SOUTH OF THE CENTERLINE OF THE TRAIL.



- 3/4" x 18" IRON REBAR SET, 1.50#/FT
- ⊕ HARRISON (BROKEN-TOP) FOUND
- VINYL "T" POST

ADAMS COUNTY

Survey Monument Record

TYPE OF MONUMENT: HARRISON MONUMENT

STATE PLANE COORDINATES: N \_\_\_\_\_

E \_\_\_\_\_

ELEVATION — M.S.L. DATUM: \_\_\_\_\_

THETA ANGLE: \_\_\_\_\_

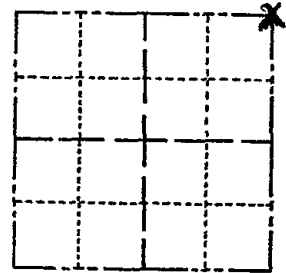
FIELD BOOK: 105 m PAGE 55

CORNER NO. 182 <sup>(3)</sup>

SECTION 6

TOWN 18

RANGE 6



LOCATION  
(Indicated by 'X')

SEAL:



BASIS FOR MONUMENT LOCATION

(Use reverse side if necessary)

Show info such as: History of corner, with reference to Vol. and pg, dates, surveyor; exact description of monument replaced; if location computed, by taped or EDM traverse; landowner remarks, etc.

Found old Car Axle housing.

August 28, 1972

Anthony B. Kiedrowski R.L.S. 878

Landowners in the area had accepted this as marking the section corner. Location verified by partial traverse of section 6.

OK 11-30-79 RH-DA  
OK 3-8-83 GR-SS  
3-NEW, 3-GONE, MON TOP BROKEN - 8-11-92 56-BS  
ALL OK, 2-24-98 - JG  
1-GONE, 1-NEW, 2-13-03 - JG-SS

CERTIFIED CORRECT:

*Anthony B. Kiedrowski*  
Registered Land Surveyor

DATE: 1-30-73

TIE SKETCH 1-GONE, 1-NEW, TOP BROKEN OFF, 11-15-67 - 56-JS

