

35 SECTION    19 TOWN    06 RANGE

# ADAMS COUNTY

COUNTY CORNER NO: 131  
 ROMPORTOL ID: 41906350000

## PUBLIC LAND SURVEY MONUMENT RECORD

TYPE OF MONUMENT: HARRISON (BROKEN-TOP)  
 ADAMS COUNTY COORDINATES, NAD 83 (2007)

N. 255966.849

E. 551905.369

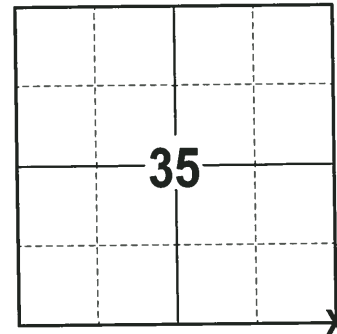
ELEVATION- \_\_\_\_\_ DATUM \_\_\_\_\_

FIELD WORK DATE: 01/22/2018

### BASIS FOR MONUMENT LOCATION

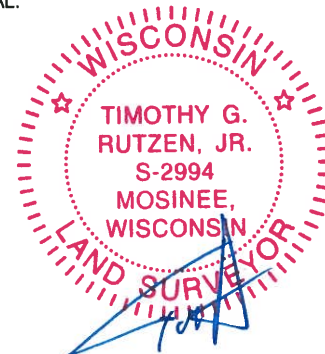
1976 - PLS 1103 RAN EDM/TRANSIT TRAVERSE AROUND SECTIONS 1, 12 AND PORTIONS OF ADJOINING SECTIONS TO DETERMINE THE SEARCH AREAS FOR INVESTIGATION. EXCAVATION WITH A BACKHOE YIELDED NO EVIDENCE OF THE ORIGINAL CORNER OR ANY REMONUMENTATION. CALCULATED THE CORNER BY DOUBLING OVER THE DISTANCE AND ONLINE BETWEEN THE NORTHWEST AND NORTH QUARTER CORNER OF SECTION 2. SET A HARRISON MONUMENT AT THE CORNER LOCATION AND TIED OUT.

2018 - PLS 2994 FOUND A HARRISON MONUMENT WITH A BROKEN-TOP 12" BELOW THE ROAD SURFACE AND 1 TIE. THE MONUMENT AGREES WITH THE EXISTING TIE. ACCEPTED THE HARRISON MONUMENT WITH A BROKEN-TOP AS THE CORNER LOCATION. SET 3 NEW TIES AND MEASURED TO THE TIES.



**LOCATION**  
(INDICATE CORNER BY "X")

SEAL:



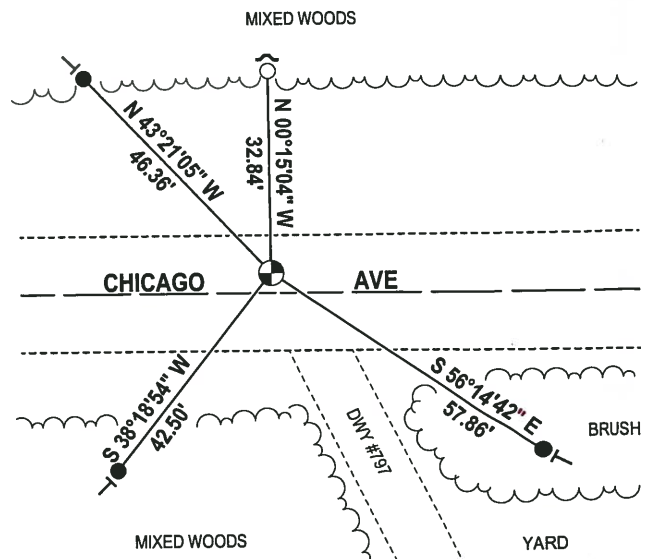
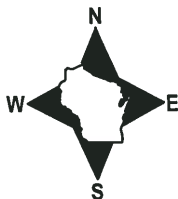
DATA SHOWN HERE ON THIS TIE SHEET IS CORRECT AND COMPLETE TO THE BEST OF MY KNOWLEDGE AND BELIEF.

PROFESSIONAL LAND SURVEYOR

DATE 3-1-18

### - TIE SKETCH

NOTE: THE CORNER FALLS 4± NORTH OF THE CENTERLINE OF CHICAGO AVE.



- 3/4" x 18" IRON REBAR SET, 1.50#/FT
- 3/4" IRON ROD FOUND
- ⊕ HARRISON (BROKEN-TOP) FOUND
- ↗ STEEL FENCE POST
- VINYL "T" POST

# ADAMS COUNTY

## Survey Monument Record

TYPE OF MONUMENT: Harrison

STATE PLANE COORDINATES: N \_\_\_\_\_

E \_\_\_\_\_

ELEVATION — M.S.L. DATUM: \_\_\_\_\_

THETA ANGLE: \_\_\_\_\_

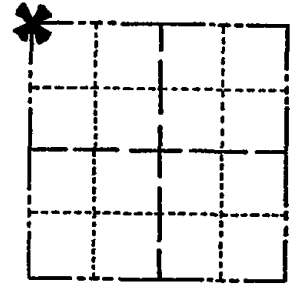
FIELD BOOK: 37 PAGE 48

CORNER NO. 1039

SECTION 1

TOWN 18

RANGE 6



LOCATION  
(Indicated by 'X')

SEAL:



### BASIS FOR MONUMENT LOCATION

(Use reverse side if necessary)

Show info such as: History of corner, with reference to Vol. and pg, dates, surveyor; exact description of monument replaced; if location computed, by taped or EDM traverse; landowner remarks, etc.

Ran EDM/transit traverse around Sections 1 and 12, and portions of adjoining sections to determine search areas for investigation.

Excavation with backhoe yielded no evidence of the original corner or any remonumentation.

Set corner by doubling over line between the Northwest and North Quarter corner of Section 2.

Set 6-16-76.

- OK - 11-22-78 RN-SS
- OK 3-4-83 GR-SS
- OK 2-11-88 GR-SS
- OK 8-18-92 JG
- 1-NEW, ALL OK, 2-23-98
- OK 1-3-03 MW

CERTIFIED CORRECT:

*Dale C. Hagen*  
Registered Land Surveyor

DATE: 9-21-76

### TIE SKETCH OK, 12-20-07- JG-SS

(Show at least four ties)

#### NOTE:

Ties in trees to nail and disc in blaze.

