

36
SECTION

19
TOWN

06
RANGE

ADAMS COUNTY

COUNTY CORNER NO: 132

ROMPORTOL ID: 41906360020

PUBLIC LAND SURVEY MONUMENT RECORD

TYPE OF MONUMENT: HARRISON (BROKEN-TOP)
ADAMS COUNTY COORDINATES, NAD 83 (2007)

N. 255971.878

E. 554550.970

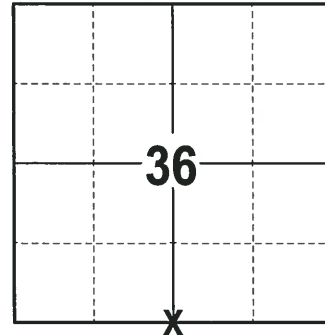
ELEVATION- _____ DATUM _____

FIELD WORK DATE: 01/22/2018

BASIS FOR MONUMENT LOCATION

1976 - PLS 1103 RAN EDM/TRANSIT TRAVERSE AROUND SECTIONS 1, 12 AND PORTIONS OF ADJOINING SECTIONS TO DETERMINE THE SEARCH AREAS FOR INVESTIGATION. EXCAVATION WITH A BACKHOE YIELDED NO EVIDENCE OF THE ORIGINAL CORNER OR ANY REMONUMENTATION. CALCULATED CORNER EQUIDISTANT AND ON LINE BETWEEN THE NORTHEAST AND NORTHWEST CORNERS OF SECTION 1. SET A HARRISON MONUMENT AT THE CORNER LOCATION AND TIED OUT.

2018 - PLS 2994 FOUND A HARRISON MONUMENT WITH A BROKEN-TOP 10" BELOW THE ROAD SURFACE, 1 TIE AND 1 WITNESS. THE MONUMENT AGREES WITH THE EXISTING TIE AND WITNESS. ACCEPTED THE HARRISON MONUMENT WITH A BROKEN-TOP AS THE CORNER LOCATION. SET 3 NEW TIES AND MEASURED TO THE TIES AND WITNESS.



LOCATION
(INDICATE CORNER BY "X")

SEAL:



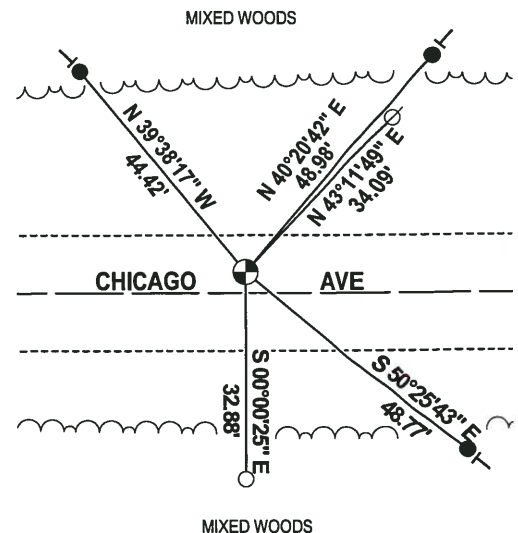
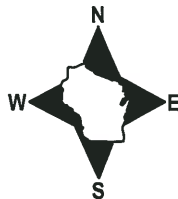
DATA SHOWN HERE ON THIS TIE SHEET IS CORRECT AND COMPLETE TO THE BEST OF MY KNOWLEDGE AND BELIEF.

PROFESSIONAL LAND SURVEYOR

DATE 3-1-18

- TIE SKETCH

NOTE: THE CORNER FALLS 4± NORTH OF THE CENTERLINE OF CHICAGO AVE.



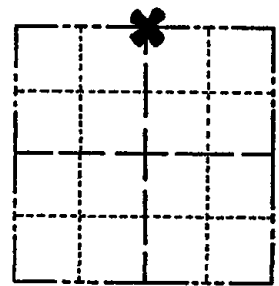
- 3/4" x 18" IRON REBAR SET, 1.50#/FT
- 1-1/4" O.D. IRON PIPE FOUND
- ⊕ HARRISON (BROKEN-TOP) FOUND
- ∅ WITNESS POWER POLE FOUND
- VINYL "T" POST

ADAMS COUNTY

Survey Monument Record

TYPE OF MONUMENT: Harrison
STATE PLANE COORDINATES: N
E
ELEVATION - M.S.L. DATUM:
THETA ANGLE:
FIELD BOOK: 37 PAGE 49

CORNER NO. 1040
SECTION 1
TOWN 18
RANGE 6



LOCATION (Indicated by 'X')

BASIS FOR MONUMENT LOCATION

(Use reverse side if necessary)

Show info such as: History of corner, with reference to Vol. and pg, dates, surveyor; exact description of monument replaced; if location computed, by taped or EDM traverse; landowner remarks, etc.

SEAL:



Ran EDM/transit traverse around Sections 1 and 12, and portions of adjoining sections to determine search areas for investigation.

Excavation with backhoe yielded no evidence of the original corner or any remonumentation.

Set corner equidistant and on line between the Northeast and Northwest corners of Section 1.

Set 6-16-76.

- OK 11-22-78 RN-SS
3-4-83 GR-SS TOP BROKEN-BOTTOM IN PLACE
2-11-88 " " " " " " " "
8-18-92 " " " " " " " "
2-GONE, 2-NEW, 2-23-98 - JG
OK 1-3-03 M

CERTIFIED CORRECT:

Dale C. Hagen
Registered Land Surveyor
DATE: 9-20-96

TIE SKETCH OK, 12-20-07, JG-SS

(Show at least four ties)

NOTE:

Ties in trees to nail and disc in blaze.

