

## PUBLIC LAND SURVEY MONUMENT RECORD

TYPE OF MONUMENT: HARRISON (BROKEN-TOP)  
 ADAMS COUNTY COORDINATES, NAD 83 (2007)

N. 253383.140

E. 551896.240

ELEVATION-        DATUM       

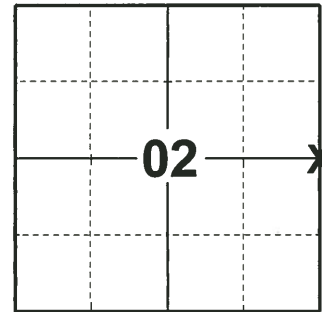
FIELD WORK DATE: 12/16/2019

### BASIS FOR MONUMENT LOCATION

1976 - PLS 1103 RAN EDM/TRANSIT TRAVERSE AROUND SECTION 1 AND 12, AND PARTS OF THE ADJOINING SECTIONS TO DETERMINE SEARCH AREAS FOR INVESTIGATION. INVESTIGATION YIELDED REMAINS OF A POST AT FENCE CORNER (EAST, WEST, AND NORTH), WHICH FITS SECTION DATA WELL. ACCEPTED POST AND REMONUMENTED WITH HARRISON.

2013 - PLS 1478 REDREW TIE SHEET.

2019 - PLS 2675 FOUND HARRISON (BROKEN-TOP) 6" BELOW THE WATER SURFACE AND 4 WITNESS TREES. THE MONUMENT AGREES WITH ALL 4 WITNESS TREES. ACCEPTED THE HARRISON (BROKEN-TOP) AS THE CORNER LOCATION. SET 4 NEW TIES AND MEASURED TO THE EXISTING WITNESS TREES.



**LOCATION**  
 (INDICATE CORNER BY "X")

SEAL:

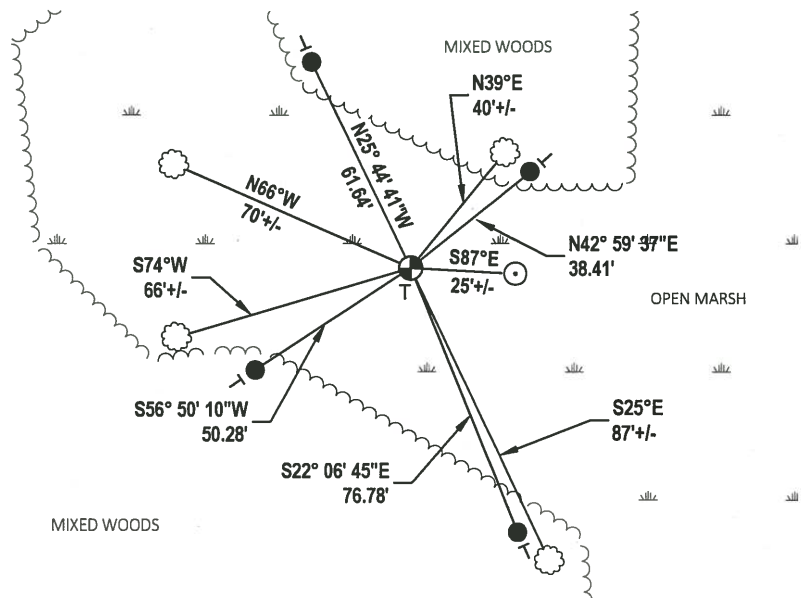
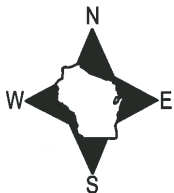


DATA SHOWN HERE ON THIS TIE SHEET IS CORRECT AND COMPLETE TO THE BEST OF MY KNOWLEDGE AND BELIEF.

PROFESSIONAL LAND SURVEYOR

DATE 1/9/2020

### - TIE SKETCH



- SET 3/4" x 18" IRON REBAR, 1.50#/FT
- ⊙ FOUND HARRISON (BROKEN-TOP) MONUMENT
- ⊖ VINYL "T" POST
- ☁ WITNESS TREE
- ⊙ WOOD POST

ADAMS COUNTY

CORNER NO. 1046  
SECTION 1  
TOWN 18  
RANGE 6

Survey Monument Record

TYPE OF MONUMENT: Harrison

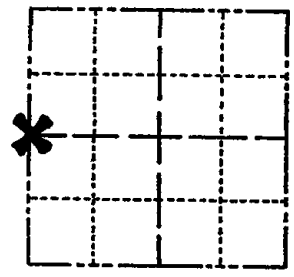
STATE PLANE COORDINATES: N \_\_\_\_\_

E \_\_\_\_\_

ELEVATION — M.S.L. DATUM: \_\_\_\_\_

THETA ANGLE: \_\_\_\_\_

FIELD BOOK: 37 PAGE 49



LOCATION  
(Indicated by 'X')

BASIS FOR MONUMENT LOCATION

(Use reverse side if necessary)

Show info such as: History of corner, with reference to Vol. and pg, dates, surveyor; exact description of monument replaced; if location computed, by taped or EDM traverse; landowner remarks, etc.

Ran EDM/transit traverse around Sections 1 and 12, and parts of adjoining sections to determine search areas for investigation.

Investigation yielded remains of post at fence corner (East, West and North), which fits section data well.

Accepted post and remonumented with Harrison on 6-16-76.

SEAL:



OK 11-30-78 RN-DA  
4-19-83 GR-SS - OK. - WALK TO COR. FROM NORTH  
OK - 5-11-88 GR-SS  
1 NEW TIE 1-11-93 JG-SS  
CORNER UNDERWATER, TIES OK 4-27-98  
1-GONE, 1-NEW, MON. OK 3-6-03-JG

CERTIFIED CORRECT:

Dale C. Hagen  
Registered Land Surveyor  
DATE: 9-21-76

TIE SKETCH 1 NEW TIE 9-8-08

(Show at least four ties)

NOTE:

Ties in trees to nail and disc in blaze.

