

06 SECTION 18 TOWN 06 RANGE

ADAMS COUNTY

COUNTY CORNER NO: 22
ROMPORTOL ID: 41806060020

PUBLIC LAND SURVEY MONUMENT RECORD

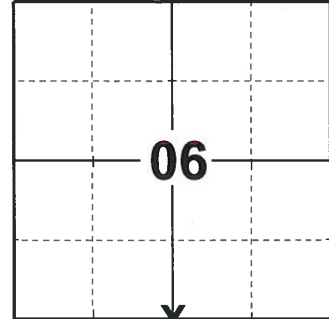
TYPE OF MONUMENT: ADAMS COUNTY CONCRETE MONUMENT W/1/2" DRILL HOLE
ADAMS COUNTY COORDINATES, NAD 83 (2007)

N. 250258.076

E. 528178.774

ELEVATION- _____ DATUM _____

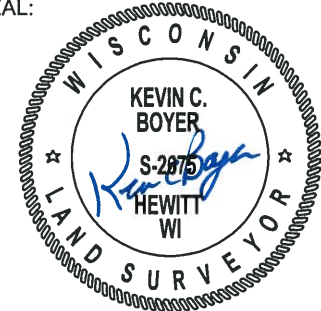
FIELD WORK DATE: 05/30/2019



LOCATION

(INDICATE CORNER BY "X")

SEAL:



DATA SHOWN HERE ON THIS TIE SHEET IS CORRECT AND COMPLETE TO THE BEST OF MY KNOWLEDGE AND BELIEF.

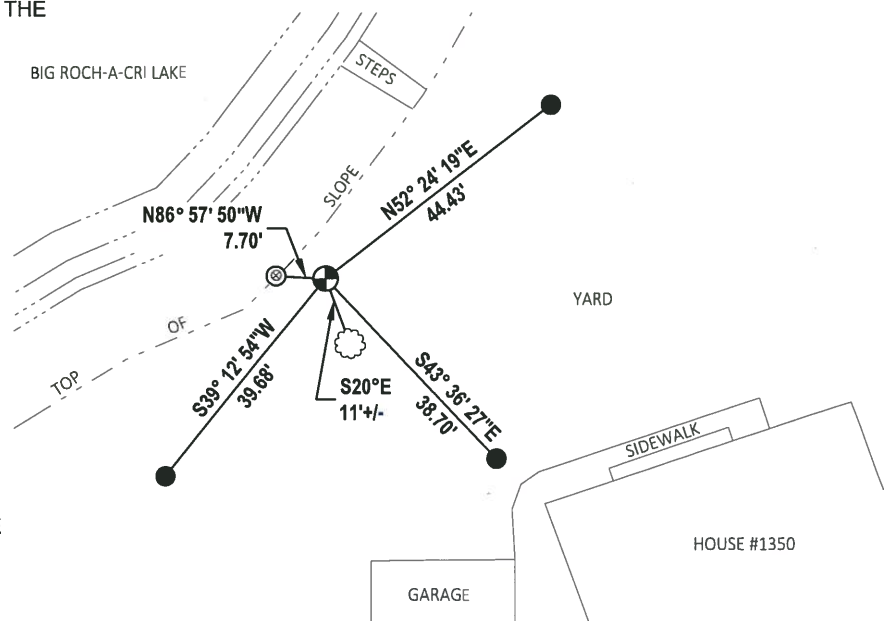
PROFESSIONAL LAND SURVEYOR

DATE 8/2/19

TIE SKETCH

NOTES: ALL TIES ARE SET 12" BELOW THE GROUND SURFACE.

SET A 3/4" REBAR ON THE WEST EDGE OF THE MONUMENT.



- SET 3/4" x 18" IRON REBAR, 1.50#/FT
- ⊙ FOUND 1-1/2" O.D. IRON PIPE
- ⊕ FOUND ADAMS COUNTY CONCRETE MONUMENT W/1/2" DRILL HOLE
- ☼ WITNESS TREE

ADAMS COUNTY

CORNER NO. 185

Survey Monument Record

SECTION 6

TYPE OF MONUMENT: concrete

TOWN 18

STATE PLANE COORDINATES: N _____

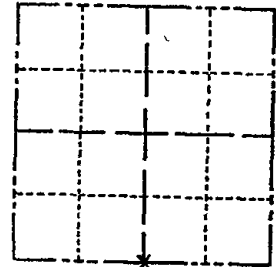
RANGE 6

E _____

ELEVATION -- M.S.L. DATUM: _____

THETA ANGLE: _____

FIELD BOOK: 105 PAGE 62



LOCATION
(Indicated by 'X')

SEAL:

BASIS FOR MONUMENT LOCATION

(Use reverse side if necessary)

Show info such as: History of corner, with reference to Vol. and pg, dates, surveyor; exact description of monument replaced; if location computed, by taped or EDM traverse; landowner remarks, etc.

Found a concrete monument which is a reference to the actual corner

August 28, 1972

Anthony B. Kiedrowski R.L.S. 878



- 3-8-83 GR-SS OK
- 2-11-88 GR-SS "
- 8-11-92 SG-BS "
- ALL OK 2-23-98-JG
- OK, 12-17-02-JG
- OK, 11-27-07-JG

CERTIFIED CORRECT:

Registered Land Surveyor

DATE: _____

TIE SKETCH

(Show at least four ties)

