

## PUBLIC LAND SURVEY MONUMENT RECORD

TYPE OF MONUMENT: HARRISON  
 ADAMS COUNTY COORDINATES, NAD 83 (2007)

N. 250583.222

E. 536142.030

ELEVATION- \_\_\_\_\_ DATUM \_\_\_\_\_

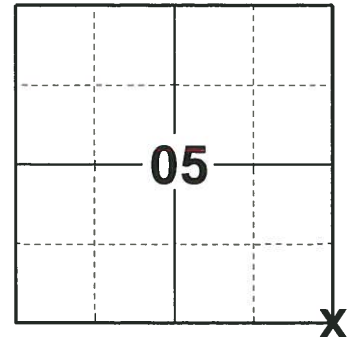
FIELD WORK DATE: 05/30/2019

### BASIS FOR MONUMENT LOCATION

1971 - PLS 981 FOUND IRON PIPE AND SET HARRISON MONUMENT.

2013 - PLS 1478 REDREW TIE SHEET.

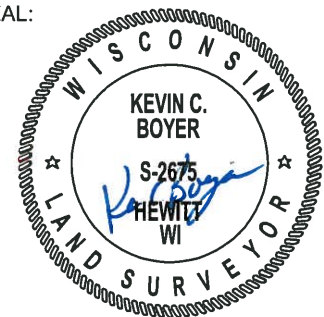
2019 - PLS 2675 FOUND A HARRISON MONUMENT FLUSH WITH THE ROAD SURFACE, 3 WITNESSES AND 1 PROPERTY IRON. THE MONUMENT AGREES WITH THE EXISTING WITNESSES. ACCEPTED THE HARRISON MONUMENT AS THE CORNER LOCATION. SET 3 NEW TIES AND MEASURED TO THE TIES, PROPERTY IRON AND WITNESSES.



**LOCATION**

(INDICATE CORNER BY "X")

SEAL:



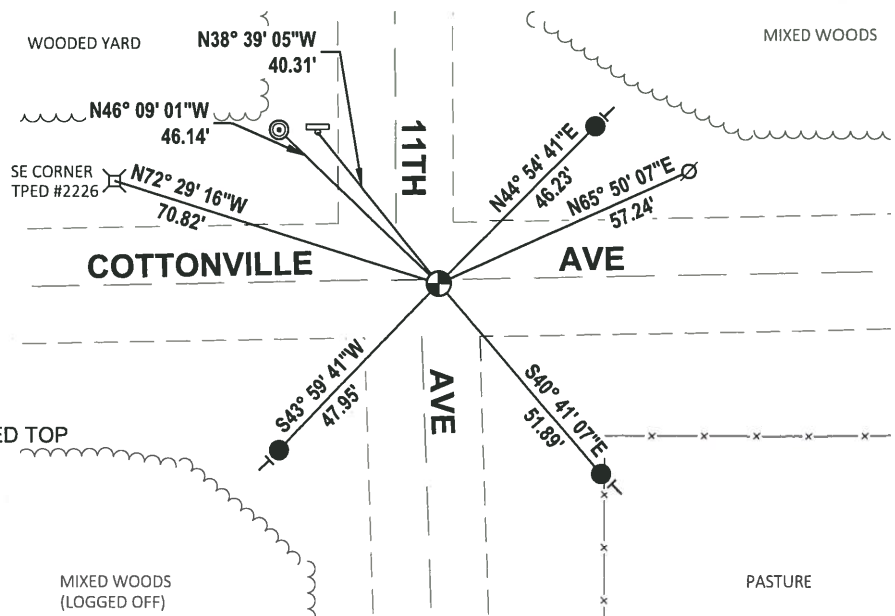
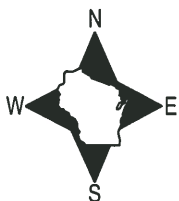
DATA SHOWN HERE ON THIS TIE SHEET IS CORRECT AND COMPLETE TO THE BEST OF MY KNOWLEDGE AND BELIEF.

PROFESSIONAL LAND SURVEYOR

DATE 8/2/19

### TIE SKETCH

NOTE: THE CORNER FALLS 1'± SOUTH OF THE CENTERLINE OF COTTONVILLE AVE AND 6'± EAST OF THE CENTERLINE OF 11TH AVE.



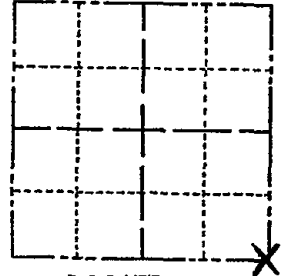
- SET 3/4" x 18" IRON REBAR, 1.50#/FT
- ⊙ FOUND 2-3/8" O.D. IRON PIPE W/CRIMPED TOP
- ⊕ FOUND HARRISON MONUMENT
- ⊗ WITNESS POWER POLE
- ⊔ WITNESS STOP SIGN
- ⊥ VINYL "T" POST

ADAMS COUNTY

Survey Monument Record

CORNER NO. 19
SECTION 5
TOWN 18
RANGE 6

TYPE OF MONUMENT: 30" HARRISON
STATE PLANE COORDINATES: N
E
ELEVATION - M.S.L. DATUM:
THETA ANGLE:
FIELD BOOK: 104 PAGE 51



LOCATION (Indicated by 'X')

SEAL:

BASIS FOR MONUMENT LOCATION

(Use reverse side if necessary)

Show info such as: History of corner, with reference to Vol. and pg, dates, surveyor; exact description of monument replaced; if location computed, by taped or EDM traverse; landowner remarks, etc.

Found iron pipe and set monument

July 14, 1971

Sam T. Mullen R.L.S. S-981

- OK 11-30-78 RN-DA
OK 3-4-83 GR-SS 1 NEW TIE
" 2-2-88 " "
1-NEW, 8-7-92 JG-BS
OK, 2-11-98-JG
OK, 12-17-02-JG

CERTIFIED CORRECT:

Registered Land Surveyor

DATE:

TIE SKETCH OK, 11-27-07-JG

(Show at least four ties)

