

PUBLIC LAND SURVEY MONUMENT RECORD

TYPE OF MONUMENT: HARRISON
 ADAMS COUNTY COORDINATES, NAD 83 (2007)

N. 250607.821

E. 538770.080

ELEVATION- - - - - DATUM - - - - -

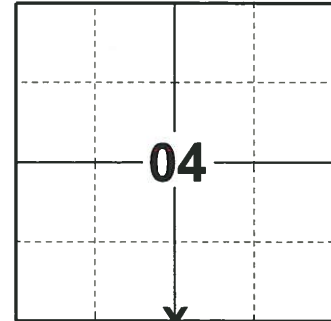
FIELD WORK DATE: 05/30/2019

BASIS FOR MONUMENT LOCATION

1978 - PLS 1103 RAN EDM/T2 TRAVERSE AROUND SECTION 9 AND MANY ADJOINING SECTIONS TO DETERMINE SEARCH AREA. THIS QUARTER CORNER WAS SET PROPORTIONATE AND ON LINE BETWEEN ADJACENT SECTION CORNERS AFTER AN EXTENSIVE SEARCH YIELDED NEITHER THE ORIGINAL MONUMENT OR ANY SUBSEQUENT MONUMENTATION. EXCAVATION WITH BACKHOE BY ANTHONY KIEDROWSKI, ADAMS COUNTY SURVEYOR, YIELDED NO EVIDENCE OF THIS CORNER. COULD FIND NO EVIDENCE OF ORIGINAL BEARING TREES. SET HARRISON MONUMENT.

2013 - PLS 1478 REDREW TIE SHEET.

2019 - PLS 2675 FOUND A HARRISON MONUMENT 4" BELOW THE ROAD SHOULDER, 1 TIE AND 2 WITNESSES. THE MONUMENT AGREES WITH THE EXISTING TIE AND WITNESSES. ACCEPTED THE HARRISON MONUMENT AS THE CORNER LOCATION. SET 3 NEW TIES AND MEASURED TO THE TIES AND WITNESSES.



LOCATION

(INDICATE CORNER BY "X")

SEAL:



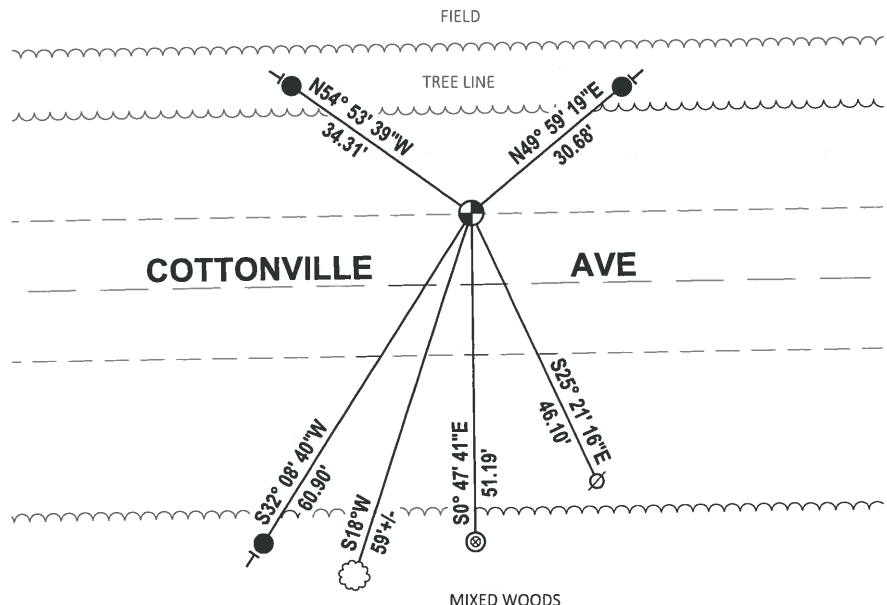
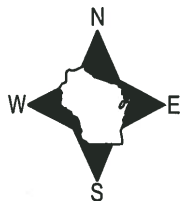
DATA SHOWN HERE ON THIS TIE SHEET IS CORRECT AND COMPLETE TO THE BEST OF MY KNOWLEDGE AND BELIEF.

PROFESSIONAL LAND SURVEYOR

DATE 8/2/19

- TIE SKETCH

NOTE: THE CORNER FALLS 11'± NORTH OF THE CENTERLINE OF COTTONVILLE AVE.

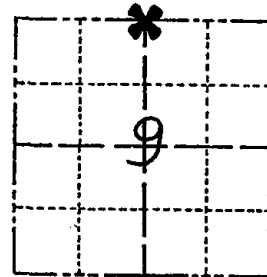


- SET 3/4" x 18" IRON REBAR, 1.50#/FT
- ⊙ FOUND 1-1/2" O.D. IRON PIPE
- ⊕ FOUND HARRISON MONUMENT
- ⊘ WITNESS POWER POLE
- ┆ VINYL "T" POST
- ⊙ WITNESS TREE

Government Land Corner Certificate

ADAMS County
 TYPE OF MONUMENT: HARRISON STD.
 STATE PLANE COORDINATES: N _____
 E _____
 ELEVATION — M.S.L. DATUM: _____
 THETA ANGLE: _____
 FIELD BOOK: 54 PAGE 38
 DRAWN BY: SCOTT SORENSEN

CORNER NO. 26
 SECTION 9
 TOWN 18
 RANGE 6



LOCATION
(Indicated by 'X')

BASIS FOR MONUMENT LOCATION

Show info such as: History of corner, with reference to Vol. and pg., dates, surveyor; exact description of monument replaced; if location computed, by taped or EDM traverse; landowner remarks, etc. (Use reverse side if necessary)

Ran EDM/T2 traverse around Section 9 and many adjoining sections to determine search area.

This quarter corner was set proportionate and on line between adjacent section corners after an extensive search yielded neither the original monument or any subsequent monumentation.

Excavation with backhoe by Anthony Kiedrowski, Adams County Surveyor, yielded no evidence of this corner. Could find no evidence of original bearing trees.

Set Harrison Monument on 11-4-1977.

SEAL:



DATA SHOWN HERE ON
CERTIFIED CORRECT:

Dale C. Hagen
Registered Land Surveyor

DATE: January 3, 1978

TIE SKETCH

Show at least four ties, also fence lines, roads, topo, size and type of witness trees' and if off road - best way to arrive at corner.

NOTE

Ties in trees to nail in disc.

MAINTENANCE RECORD

Date	Init.	Remarks
11-30-78	RN-DA	MON + TIES OK
3-4-83	GR-SS	OK
2-2-88	" "	"
8-7-92	JG-RS	"
3-31-98	JG-SS	2-GONE 2-NEW, MON OK
12-17-02	JG	1-NEW, MON. OK
11-27-07	JG	OK

REVISED 1977

