

PUBLIC LAND SURVEY MONUMENT RECORD

TYPE OF MONUMENT: 2" O.D. IRON PIPE WITH CAP
 ADAMS COUNTY COORDINATES, NAD 83 (2007)

N. 250634.855

E. 544027.213

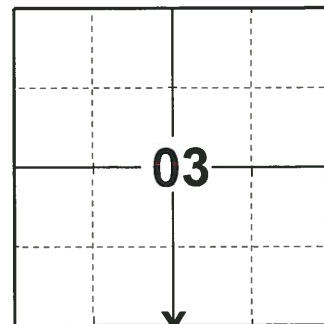
ELEVATION- - - - DATUM - - - -

FIELD WORK DATE: 05/29/2019

BASIS FOR MONUMENT LOCATION

1978 - PLS 1103 RAN EDM/T2 TRAVERSE AROUND SECTION 10 AND MANY ADJOINING SECTIONS TO DETERMINE SEARCH AREA. THIS QUARTER CORNER WAS SET PROPORTIONATE AND ON LINE BETWEEN ADJACENT SECTION CORNERS AFTER AN EXTENSIVE SEARCH YIELDED NEITHER THE ORIGINAL MONUMENTATION NOR ANY SUBSEQUENT MONUMENTATION. EXCAVATION WITH BACKHOE BY ANTHONY KIEDROWSKI, ADAMS COUNTY SURVEYOR, AT CENTER OF ROAD YIELDED NO EVIDENCE OF CORNER, ORIGINAL OR AS REMONUMENTED. SET HARRISON MONUMENT.

2019 - PLS 2675 FOUND A 2" O.D. IRON PIPE WITH CAP 4" BELOW THE GROUND 2 TIES AND 1 WITNESS. THE MONUMENT AGREES WITH THE EXISTING TIES AND WITNESS. ACCEPTED THE 2" O.D. IRON PIPE AD THE CORNER LOCATION. SET 3 NEW TIES AND MEASURED TO THE EXISTING TIES AND WITNESS.



LOCATION

(INDICATE CORNER BY "X")

SEAL:



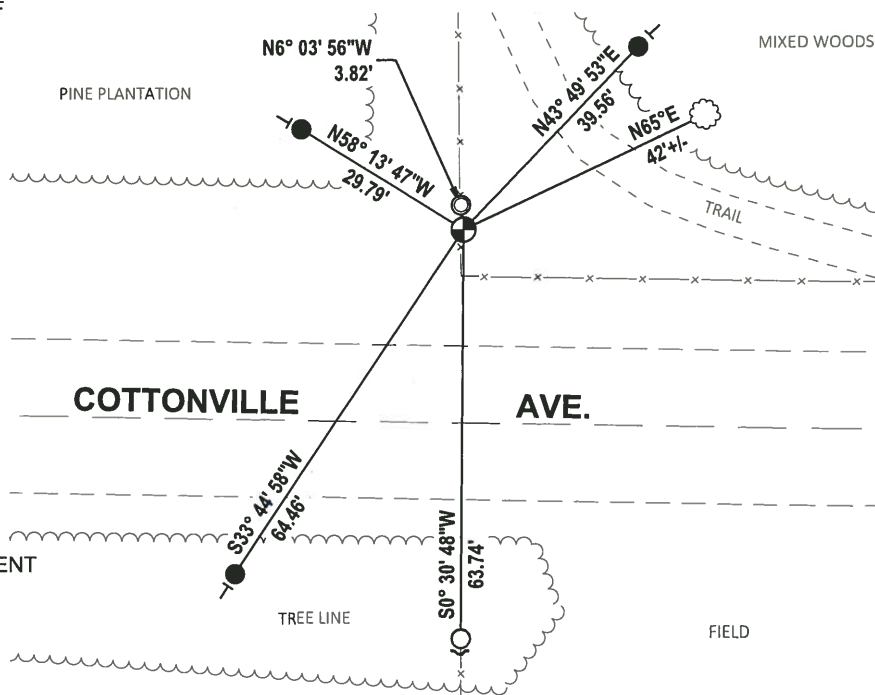
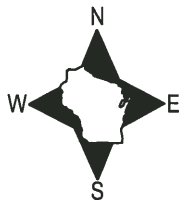
DATA SHOWN HERE ON THIS TIE SHEET IS CORRECT AND COMPLETE TO THE BEST OF MY KNOWLEDGE AND BELIEF.

PROFESSIONAL LAND SURVEYOR

DATE 8/2/19

TIE SKETCH

NOTE: THE CORNER LANDS 30'± NORTH OF COTTONVILLE AVE.

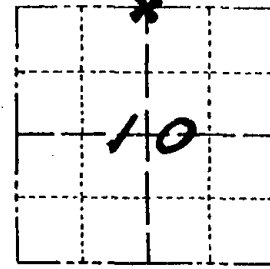


- SET 3/4" x 18" IRON REBAR, 1.50#/FT
- FOUND 3/4" IRON ROD
- ⊙ FOUND 1-1/4" O.D. IRON PIPE
- ⊕ FOUND 2" O.D. IRON PIPE WITH CAP MONUMENT
- ┘ STEEL FENCE POST
- └ VINYL "T" POST
- ☼ WITNESS TREE

Government Land Corner Certificate

ADAMS County
 TYPE OF MONUMENT: HARRISON STD.
 STATE PLANE COORDINATES: N _____
 E _____
 ELEVATION --- M.S.L. DATUM: _____
 THETA ANGLE: _____
 FIELD BOOK: 57 PAGE 32
 DRAWN BY: SCOTT SORENSEN

CORNER NO. 28
 SECTION 10
 TOWN 18
 RANGE 6



LOCATION
(Indicated by 'X')

BASIS FOR MONUMENT LOCATION

Show info such as: History of corner, with reference to Vol. and pg., dates, surveyor; exact description of monument replaced; if location computed, by taped or EDM traverse; landowner remarks, etc. (Use reverse side if necessary)
 Ran EDM/T2 traverse around Section 10 and many adjoining sections to determine search area.

SEAL:



This quarter corner was set proportionate and on line between adjacent section corners after an extensive search yielded neither the original monumentation nor any subsequent monumentation.

Excavation with backhoe by Anthony Kiedrowski, Adams County Surveyor, at center of road yielded no evidence of corner, original or as remonumented.

Set Harrison Monument on 10-17-77.

DATA SHOWN HERE ON CERTIFIED CORRECT:

Dale C. Hagen
 Registered Land Surveyor

DATE: January 3, 1978

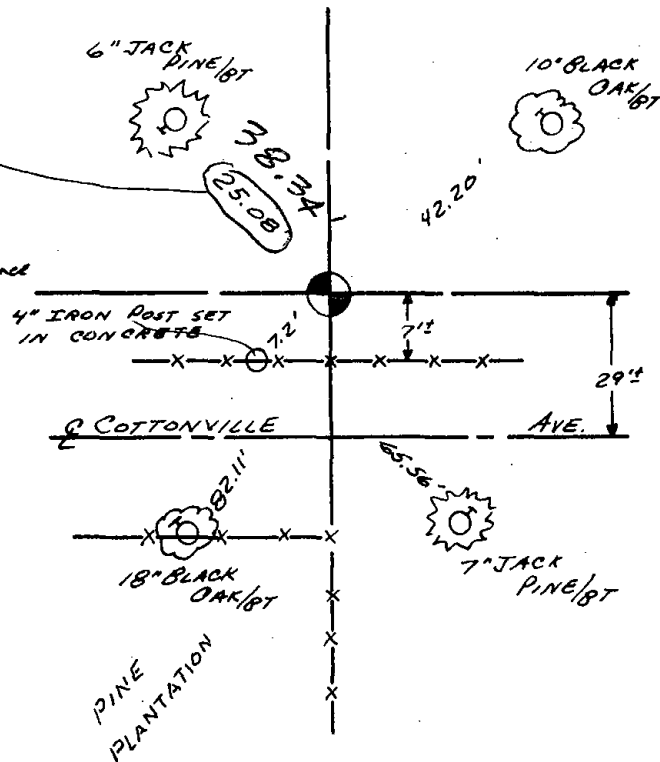
TIE SKETCH

Show at least four ties, also fence lines, roads, topo, size and type of witness trees' and if off road - best way to arrive at corner.

NOTE

Ties in trees to nail in disc.

Jan 17 '83
 This tree top broken off.
 Fd another 6" Jack Pine with "BT" and scanner at new distance shown
 Ken Carlson



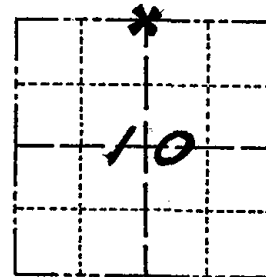
MAINTENANCE RECORD

Date	Init.	Remarks
11-22-78	MSL	OK

Government Land Corner Certificate

ADAMS County
 TYPE OF MONUMENT: HARRISON STD.
 STATE PLANE COORDINATES: N _____
 E _____
 ELEVATION — M.S.L. DATUM: _____
 THETA ANGLE: _____
 FIELD BOOK: 57 PAGE 32
 DRAWN BY: SCOTT SORENSEN

CORNER NO. 28
 SECTION 10
 TOWN 18
 RANGE 6



LOCATION
(Indicated by 'X')

BASIS FOR MONUMENT LOCATION

Show info such as: History of corner, with reference to Vol. and pg., dates, surveyor; exact description of monument replaced; if location computed, by taped or EDM traverse; landowner remarks, etc. (Use reverse side if necessary)
 Ran EDM/T2 traverse around Section 10 and many adjoining sections to determine search area.

This quarter corner was set proportionate and on line between adjacent section corners after an extensive search yielded neither the original monumentation nor any subsequent monumentation.

Excavation with backhoe by Anthony Kiedrowski, Adams County Surveyor, at center of road yielded no evidence of corner, original or as remonumented.

Set Harrison Monument on 10-17-77.

SEAL:



DATA SHOWN HERE ON CERTIFIED CORRECT:

Dale C. Hagen
 Registered Land Surveyor

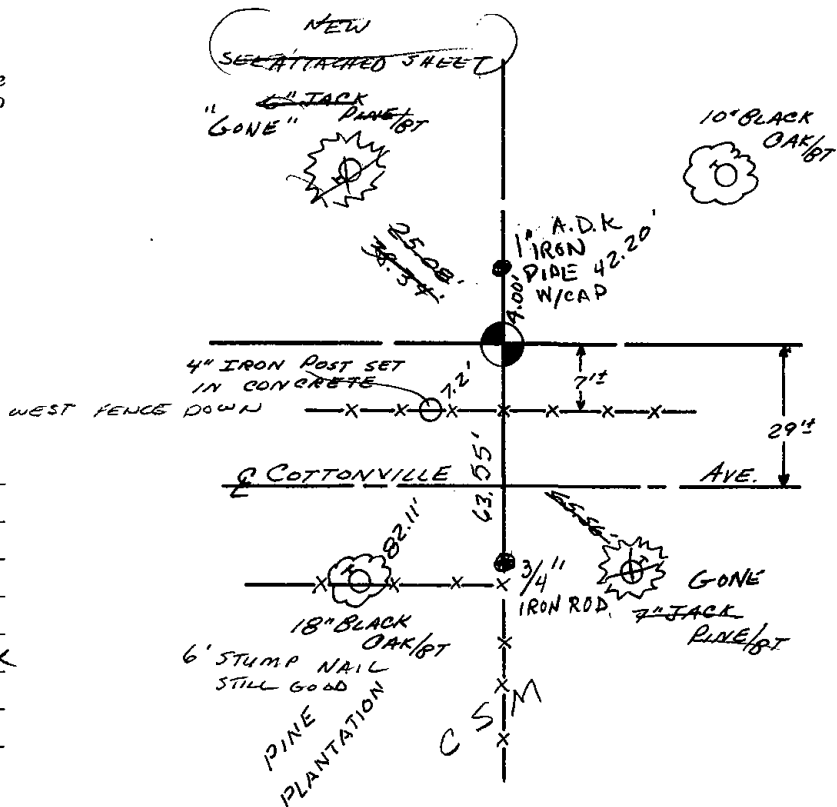
DATE: January 3, 1978

TIE SKETCH

Show at least four ties, also fence lines, roads, topo, size and type of witness trees' and if off road - best way to arrive at corner.

NOTE

Ties in trees to nail in disc.



MAINTENANCE RECORD

Date	Init.	Remarks
11-22-78	AN-SS	OK
3-4-83	SS	OK
2-11-88	GR-SS	1 GONE - 4 REMAIN
8-7-92	JG-BS	1-GONE, 2-NEW, MON. OK
3-6-98	JG	OK
12-17-02	JG	1-GONE, 5-LEFT, MON. OK
11-27-07	JG	OK