

02
SECTION

18
TOWN

06
RANGE

ADAMS COUNTY

COUNTY CORNER NO: 30

ROMPORTOL ID: 41806020020

PUBLIC LAND SURVEY MONUMENT RECORD

TYPE OF MONUMENT: HARRISON (BROKEN-TOP)
ADAMS COUNTY COORDINATES, NAD 83 (2007)

N. 250717.892

E. 549263.911

ELEVATION- DATUM

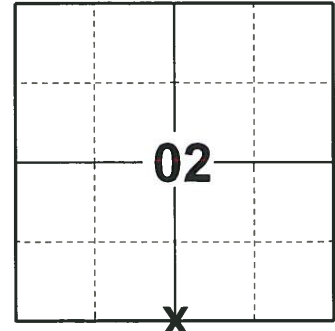
FIELD WORK DATE: 05/28/2019

BASIS FOR MONUMENT LOCATION

1976 - PLS 878 NOTICED BULGE IN BLACKTOP. EXCAVATED BY HAND AND FOUND BOTTOM TWO FEET OF A 6" POINTED WOOD POST. REPLACED WITH HARRISON. CONNECTED IT TO A TRAVERSE OF SECTION EAST OF CORNER LOCATION. LOCATION APPEARS CORRECT.

2013 - PLS 1478 REDREW TIE SHEET.

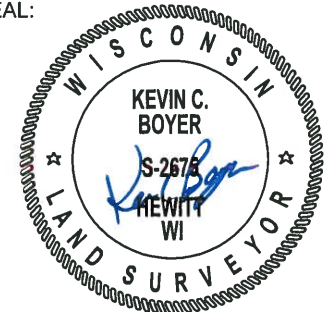
2019 - PLS 2675 FOUND HARRISON (BROKEN-TOP) 12" BELOW THE ROAD SURFACE AND DID NOT RECOVER ANY TIES OR WITNESSES. ACCEPTED THE HARRISON (BROKEN-TOP) AS THE CORNER LOCATION AND SET 4 NEW TIES.



LOCATION

(INDICATE CORNER BY "X")

SEAL:



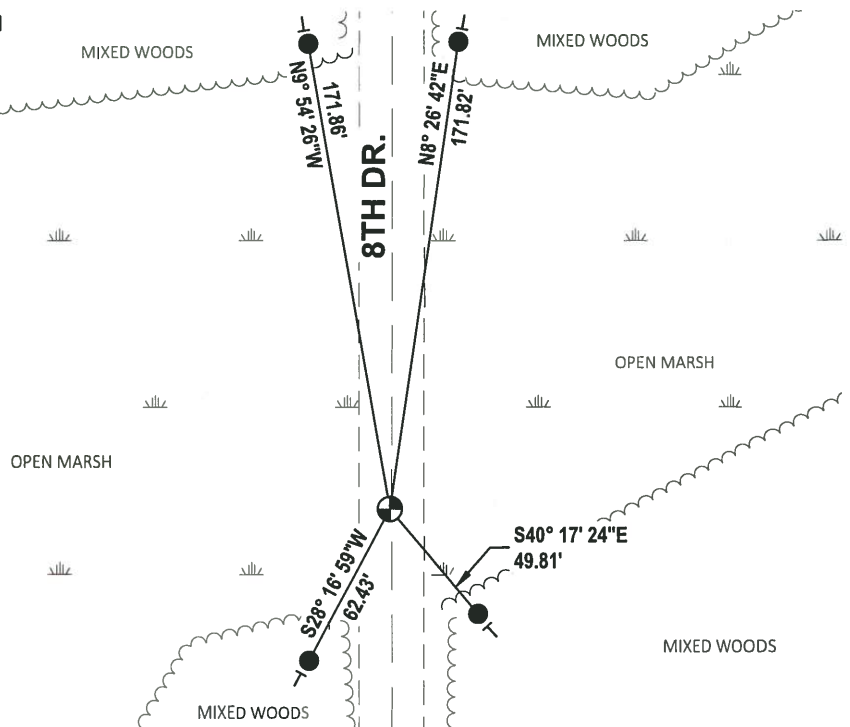
DATA SHOWN HERE ON THIS TIE SHEET IS CORRECT AND COMPLETE TO THE BEST OF MY KNOWLEDGE AND BELIEF.

PROFESSIONAL LAND SURVEYOR

DATE 8/2/19

TIE SKETCH

NOTE: THE CORNER LANDS 0.5'± WEST OF 8TH DR. CENTERLINE.



- SET 3/4" x 18" IRON REBAR, 1.50#/FT
- ⊕ FOUND HARRISON (BROKEN-TOP) MONUMENT
- ⊖ VINYL "T" POST

ADAMS COUNTY

Survey Monument Record

TYPE OF MONUMENT: Harrison standard

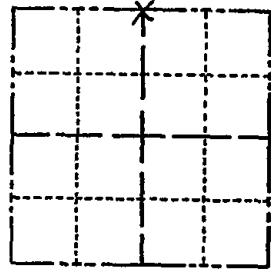
STATE PLANE COORDINATES: N _____
E _____

ELEVATION — M.S.L. DATUM: _____

THETA ANGLE: _____

FIELD BOOK: 41 PAGE 21

CORNER NO. 30
1082
SECTION 11
TOWN 18
RANGE 6



LOCATION
(Indicated by 'X')

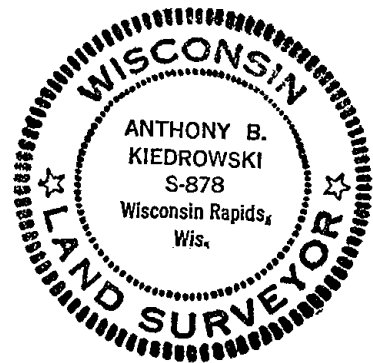
BASIS FOR MONUMENT LOCATION

(Use reverse side if necessary)

Show info such as: History of corner, with reference to Vol. and pg, dates, surveyor; exact description of monument replaced; if location computed, by taped or EDM traverse; landowner remarks, etc.

Noticed bulge in blacktop. Excavated by hand and found bottom two feet of a 6" pointed wood post. Replaced it with Harrison. Connected it to a traverse of sections east of here. Location appears correct.

SEAL:



OK 11-22-78 RN-55

2-GONE, 3-NEW 8-7-92 JG-B5

OK, 2-25-98-JG

1-GONE, 1-NEW, TOP BROKEN OFF, 3-6-03-JG

OK, 11-27-07-JG

CERTIFIED CORRECT:

Anthony B. Kiedrowski
Registered Land Surveyor

DATE: 5/20/76

TIE SKETCH

(Show at least four ties)

