

SECTION 12 TOWN 18 RANGE 05

ADAMS COUNTY

COUNTY CORNER NO: 40
 ROMPORTOL ID: 41805122000

PUBLIC LAND SURVEY MONUMENT RECORD

TYPE OF MONUMENT: RAILROAD SPIKE
 ADAMS COUNTY COORDINATES, NAD 83 (2007)

N. 247910.147
 E. 525625.504

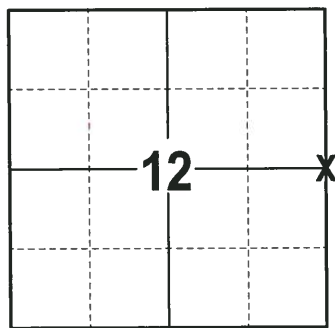
ELEVATION- DATUM

FIELD WORK DATE: 01/04/2018

BASIS FOR MONUMENT LOCATION

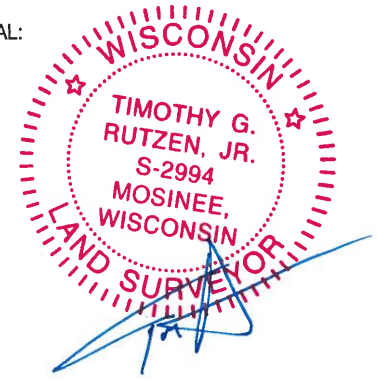
1979 - PLS 1478 RAN EDM/T2 TRAVERSE OF THE RANGE LINE BETWEEN R5E AND R6E FROM THE SW OF 19-18-6 TO THE NW OF 1-18-6 TO DETERMINE SEARCH AREAS. EXCAVATION WITH A BACKHOE YIELDED NEITHER THE ORIGINAL MONUMENT NOR ANY SUBSEQUENT REMONUMENTATION. THE LOCATION OF THE CORNER WAS DETERMINED FROM THE DESCRIPTION OF THE LOCATION AS GIVEN BY M.C. SMITH IN VOL. 2 PG. 121 ADAMS COUNTY SURVEYOR RECORDS. THE DISTANCE FROM THE CENTERLINE OF THE ROAD ON THE 1/8TH LINE TO THE EAST TO THE CORNER "MATCHES" THE DISTANCE AS RECORDED BY M.C. SMITH. THIS CORNER FITS THE DISTANCES ON THE RANGE LINE VERY WELL. SET CORNER AND TIED OUT.

2017 - PLS 2994 FOUND A RAILROAD SPIKE 10" BELOW THE ROAD SURFACE, 1 TIE AND 1 PROPERTY IRON. REMOVED THE RAILROAD SPIKE AND FOUND NO EVIDENCE OF ANY OTHER MONUMENT BELOW IT. ACCEPTED THE RAILROAD SPIKE AS THE CORNER LOCATION. RE-SET RAILROAD SPIKE IN ITS FOUND LOCATION. SET 3 NEW TIES AND MEASURED TO THE TIES AND PROPERTY IRON.



LOCATION
 (INDICATE CORNER BY "X")

SEAL:



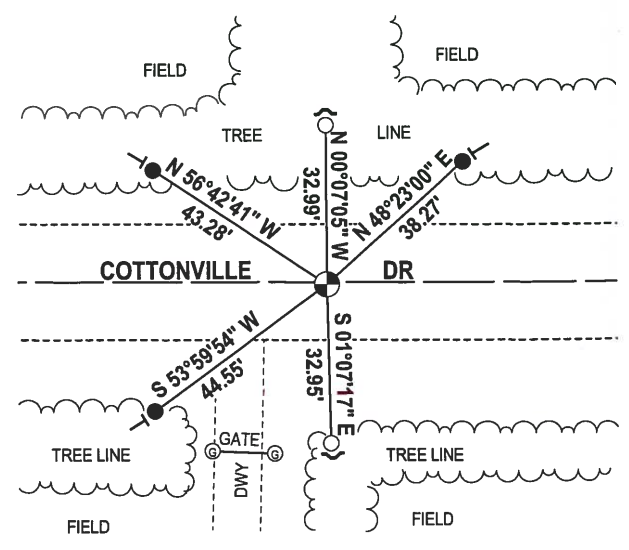
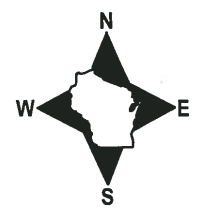
DATA SHOWN HERE ON THIS TIE SHEET IS CORRECT AND COMPLETE TO THE BEST OF MY KNOWLEDGE AND BELIEF.

PROFESSIONAL LAND SURVEYOR

DATE 2-2-18

- TIE SKETCH

NOTE: THE CORNER FALLS 0.5'± SOUTH OF THE CENTERLINE OF COTTONVILLE DR.



- 3/4" x 18" IRON REBAR SET, 1.50#/FT
- 3/4" IRON ROD FOUND
- ⊕ RAILROAD SPIKE RE-SET
- ↗ STEEL FENCE POST
- └ VINYL "T" POST

Government Land Corner Certificate

ADAMS County

TYPE OF MONUMENT: _____

STATE PLANE COORDINATES: N _____
E _____

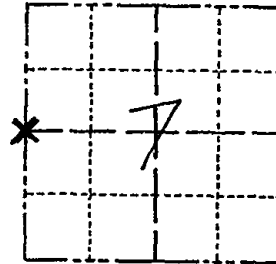
ELEVATION — M.S.L. DATUM: _____

THETA ANGLE: _____

FIELD BOOK: 69 PAGE 135

DRAWN BY: JOHN S. KEDROWSKI

CORNER NO. 34
SECTION 7
TOWN 18 N.
RANGE 6 E



LOCATION
(Indicated by 'X')

SEAL:



DATA SHOWN HERE ON
CERTIFIED CORRECT:

Gregory P Rhinehart
Registered Land Surveyor

DATE: Jan 2, 79

BASIS FOR MONUMENT LOCATION

Show info such as: History of corner, with reference to Vol. and pg., dates, surveyor; exact description of monument replaced; if location computed, by taped or EDM traverse; landowner remarks, etc. (Use reverse side if necessary)

Ran EDM/T2 traverse of the range line between R5E and R6E from the SW of 19-18-6 to the NW of 1-18-6 to determine search areas.

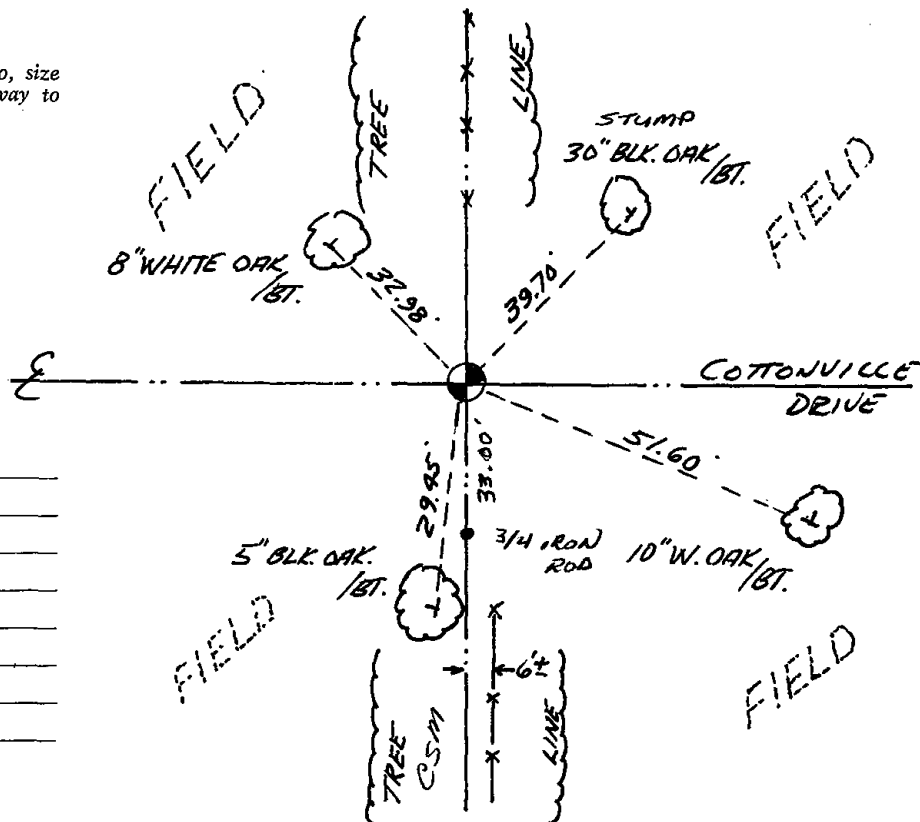
Excavation with backhoe yielded neither the original monument nor any subsequent remonumentation.

The location of the corner was determined from the description of the location as given by M.C. Smith in Vol. 2 Pg. 121 Adams county Surveyor Records.

The distance from the centerline of the road on the 1/8th line to the east to the corner "matches" the distance as recorded by M.C. Smith. this corner "fits" distances on the range line very well.

TIE SKETCH

Show at least four ties, also fence lines, roads, topo, size and type of witness trees' and if off road - best way to arrive at corner.



MAINTENANCE RECORD

Date	Init.	Remarks
3-8-83	GR-SS	OK
2-11-88	" "	"
8-11-92	JG-B5	"
2-24-98	JG	1-GONE, 1-NEW.
12-17-02	JG	OK
11-21-07	JG	OK