

PUBLIC LAND SURVEY MONUMENT RECORD

TYPE OF MONUMENT: HARRISON
ADAMS COUNTY COORDINATES, NAD 83 (2007)

N. 247945.374

E. 536136.285

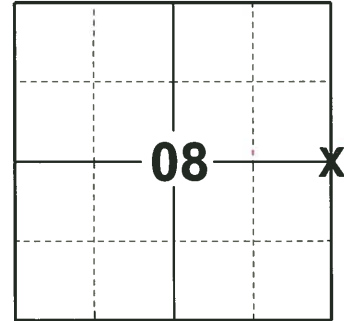
ELEVATION- - - - - DATUM - - - - -

FIELD WORK DATE: 04/18/2019

BASIS FOR MONUMENT LOCATION

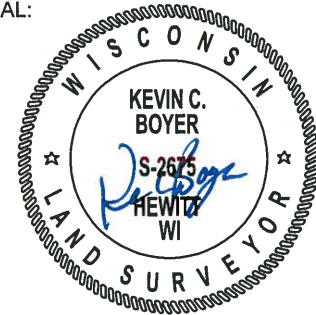
1978 - PLS 1103 RAN EDM/T2 TRAVERSE AROUND SECTION 9 AND MANY ADJOINING SECTIONS TO DETERMINE SEARCH AREA. THIS QUARTER CORNER WAS SET PROPORTIONATE AND ON LINE BETWEEN ADJACENT SECTION CORNERS AFTER AN EXTENSIVE SEARCH YIELDED NEITHER THE ORIGINAL MONUMENT OR ANY SUBSEQUENT MONUMENTATION. EXCAVATION Y ANTHONY KIEDROWSKI, ADAMS COUNTY, USING A BACKHOE YIELDED NO EVIDENCE OF THE ORIGINAL CORNER, REMONUMENTATION OF THE CORNER OR BEARING TREES. SET HARRISON MONUMENT.

2019 - PLS 2675 FOUND A HARRISON MONUMENT 4" BELOW THE ROAD SURFACE, 1 TIE AND 1 WITNESS TREE. THE MONUMENT AGREES WITH THE EXISTING TIE AND WITNESS TREE. ACCEPTED THE HARRISON MONUMENT AS THE CORNER LOCATION. SET 3 NEW TIES. MEASURED TO THE TIES AND WITNESS TREE.



LOCATION
(INDICATE CORNER BY "X")

SEAL:



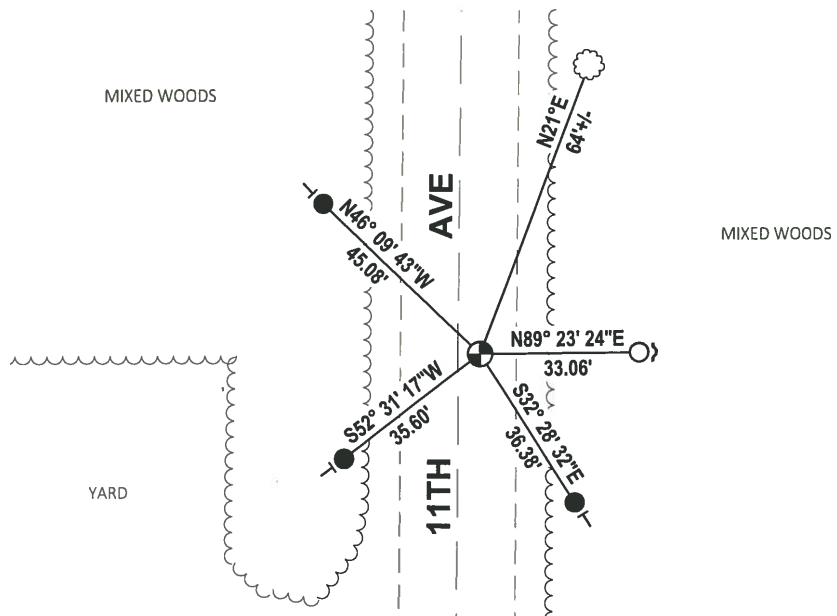
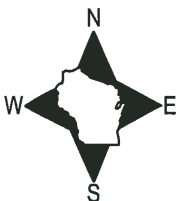
DATA SHOWN HERE ON THIS TIE SHEET IS CORRECT AND COMPLETE TO THE BEST OF MY KNOWLEDGE AND BELIEF.

PROFESSIONAL LAND SURVEYOR

DATE 8/2/19

TIE SKETCH

NOTE: THE CORNER FALLS 5'± EAST OF THE CENTERLINE OF 11TH AVE.

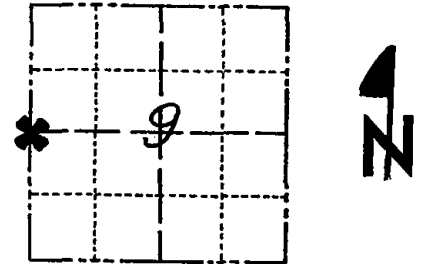


- SET 3/4" x 18" IRON REBAR, 1.50#/FT
- FOUND 3/4" IRON ROD IN 12" CONDUIT
- ⊕ FOUND HARRISON MONUMENT
- ↗ STEEL FENCE POST
- └ VINYL "T" POST
- ☁ WITNESS TREE

Government Land Corner Certificate

ADAMS County
 TYPE OF MONUMENT: HARRISON STD.
 STATE PLANE COORDINATES: N _____
 E _____
 ELEVATION — M.S.L. DATUM: _____
 THETA ANGLE: _____
 FIELD BOOK: 54 PAGE 39
 DRAWN BY: SCOTT SORENSEN

CORNER NO. 36
 SECTION 9
 TOWN 18
 RANGE 6



LOCATION
(Indicated by 'X')

BASIS FOR MONUMENT LOCATION

Show info such as: History of corner, with reference to Vol. and pg., dates, surveyor; exact description of monument replaced; if location computed, by taped or EDM traverse; landowner remarks, etc. (Use reverse side if necessary)

Ran EDM/T2 traverse around Section 9 and many adjoining sections to determine search area.

This quarter corner was set proportionate and on line between adjacent section corners after an extensive search yielded neither the original monument or any subsequent monumentation.

Excavation by Anthony Kiedrowski, Adams County, using a backhoe yielded no evidence of the original corner, remonumentation of the corner ot bearing trees.

Set Harrison Monument on 11-4-1977.

SEAL:



DATA SHOWN HERE ON
CERTIFIED CORRECT:

Dale C. Hagen
Registered Land Surveyor

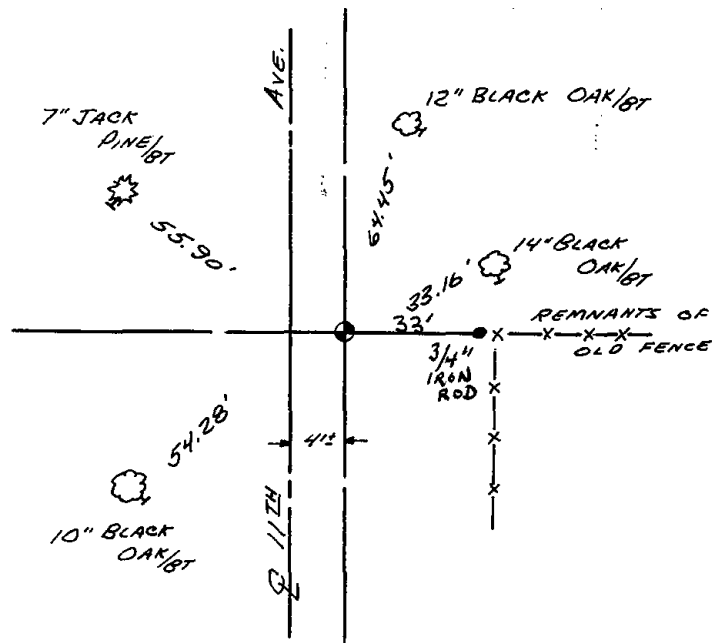
DATE: January 3, 1978

TIE SKETCH

Show at least four ties, also fence lines, roads, topo, size and type of witness trees' and if off road - best way to arrive at corner.

NOTE

Ties in trees to nail in disc.



MAINTENANCE RECORD

| Date | Init. | Remarks |
|----------|-------|--------------------|
| 11-30-78 | PN-DA | OK |
| 3-4-83 | SS | OK |
| 2-23-89 | GR-SS | " |
| 8-11-92 | JG-BS | 1-NEW TIE, MON. OK |
| 2-11-98 | JG | OK |
| 12-17-02 | JG | OK |
| 11-27-07 | JG | OK |