

07  
SECTION

18  
TOWN

06  
RANGE

# ADAMS COUNTY

COUNTY CORNER NO: 43

ROMPORTOL ID: 41806070000

## PUBLIC LAND SURVEY MONUMENT RECORD

TYPE OF MONUMENT: HARRISON  
ADAMS COUNTY COORDINATES, NAD 83 (2007)

N. 245241.550

E. 530901.948

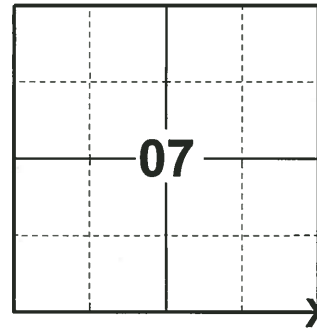
ELEVATION- - - - - DATUM - - - - -

FIELD WORK DATE: 12/18/2019

### BASIS FOR MONUMENT LOCATION

1973 - PLS 878 THE LOCATION OF THIS CORNER WAS BASED ON MEASUREMENTS A MILE EAST AND A MILE WEST OF LOCATION. MISSED THE FENCE LINE TO THE NORTH BY MORE THAN A HUNDRED FEET, THEN MEASURED ANOTHER MILE TO THE WEST TO THE RANGE LINE, ALSO MEASURED FURTHER TO THE EAST TO A CREEK. CHECKING THIS AGAINST THE ORIGINAL NOTES AND ALL OTHER EVIDENCE, CONCLUDED THAT THE FENCE LINE IN QUESTION MUST NOT BE ON THE TRUE SECTION LINE. SET HARRISON MONUMENT.

2019 - PLS 2675 FOUND HARRISON 2" ABOVE THE GROUND AND 4 WITNESS TREES. THE MONUMENT AGREES WITH ALL 4 WITNESS TREES. ACCEPTED THE HARRISON AS THE CORNER LOCATION. SET 4 NEW TIES AND MEASURED TO THE EXISTING WITNESS TREES.



LOCATION  
(INDICATE CORNER BY "X")

SEAL:



DATA SHOWN HERE ON THIS TIE SHEET IS CORRECT AND COMPLETE TO THE BEST OF MY KNOWLEDGE AND BELIEF.

PROFESSIONAL LAND SURVEYOR

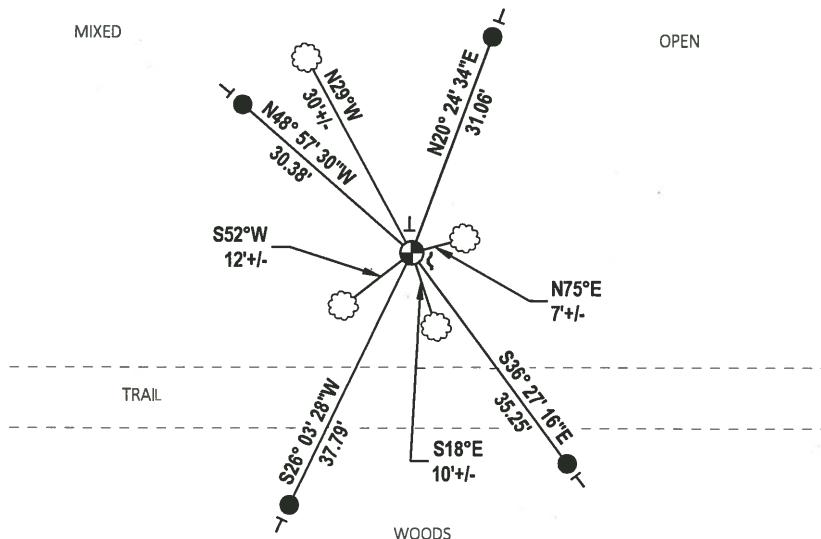
DATE 1/9/2020

### TIE SKETCH



MIXED

OPEN



- SET 3/4" x 18" IRON REBAR, 1.50#/FT
- ⊕ FOUND HARRISON MONUMENT
- ┌ STEEL FENCE POST
- └ VINYL "T" POST
- ☁ WITNESS TREE

ADAMS COUNTY

CORNER NO. 152

Survey Monument Record

SECTION 17

TYPE OF MONUMENT: 30" HARRISON

TOWN 18

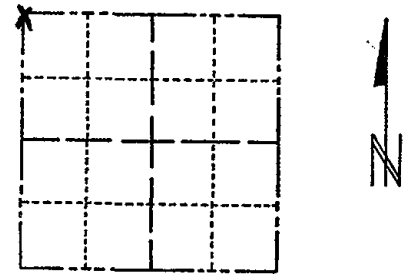
STATE PLANE COORDINATES: N \_\_\_\_\_ E \_\_\_\_\_

RANGE 6

ELEVATION - M.S.L. DATUM: \_\_\_\_\_

THETA ANGLE: \_\_\_\_\_

FIELD BOOK: 106 PAGE ?



LOCATION (Indicated by 'X')

SEAL:

BASIS FOR MONUMENT LOCATION

(Use reverse side if necessary)

Show info such as: History of corner, with reference to Vol. and pg, dates, surveyor; exact description of monument replaced; if location computed, by taped or EDM traverse; landowner remarks, etc.

Set monument

July 24, 1972

Anthony B. Kiedrowski R.L.S. 878

The location of this corner was based a measurements a mile east and a mile west of here. Since we missed the fence line to the north by more than a hundred feet, we then measured another mile to the west to the range line, we also measured further to the east to a creek. Checking this against the original notes and all other evidence, we concluded that the fence line in question must ~~be~~ not be on the true section line.



CERTIFIED CORRECT:

Signature of Anthony B. Kiedrowski, Registered Land Surveyor

DATE: 1-27-73

TIE SKETCH 1-NEW, MON. OK, 2-24-98-JG

(Show at least four ties) OK, 12-17-02-JG OK, 11-26-07-JG

