

08
SECTION

18
TOWN

06
RANGE

ADAMS COUNTY

COUNTY CORNER NO: 44

ROMPORTOL ID: 41806080020

PUBLIC LAND SURVEY MONUMENT RECORD

TYPE OF MONUMENT: HARRISON (BROKEN-TOP)

ADAMS COUNTY COORDINATES, NAD 83 (2007)

N. 245275.354

E. 533526.553

ELEVATION- - - - DATUM - - - -

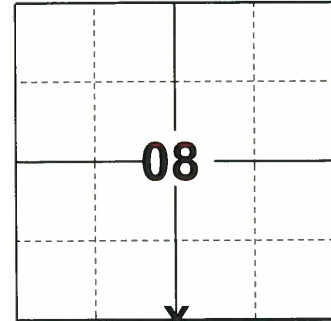
FIELD WORK DATE: 06/05/2019

BASIS FOR MONUMENT LOCATION

1973 - PLS 878 LOCATION DETERMINED FROM INFORMATION GATHERED BY A TRAVERSE OF WEST 1/2 OF SECTION 17. ALSO CHAINED ALONG THE NORTH LINE OF SECTION 16.

2008 - PLS 1452 FOUND "PK" NAIL, PRIOR TO 2008 RESURFACING PROJECT. SET NEW REFERENCE MONUMENTS (4" ALUM. DISKS SET IN CONCRETE). RE-SET SECTION CORNER AND MEASURED TIES.

2019 - PLS 2675 FOUND A SURVEY NAIL WITH A WASHER IN THE ROAD SURFACE, REMOVED THE SURVEY NAIL AND FOUND A HARRISON MONUMENT WITH A BROKEN-TOP 24" BELOW THE ROAD SURFACE AND 4 TIES. THE MONUMENT AGREES WITH THE EXISTING TIES. ACCEPTED THE HARRISON MONUMENT WITH A BROKEN-TOP AS THE CORNER LOCATION AND RE-MEASURED TO THE EXISTING TIES.



LOCATION

(INDICATE CORNER BY "X")

SEAL:



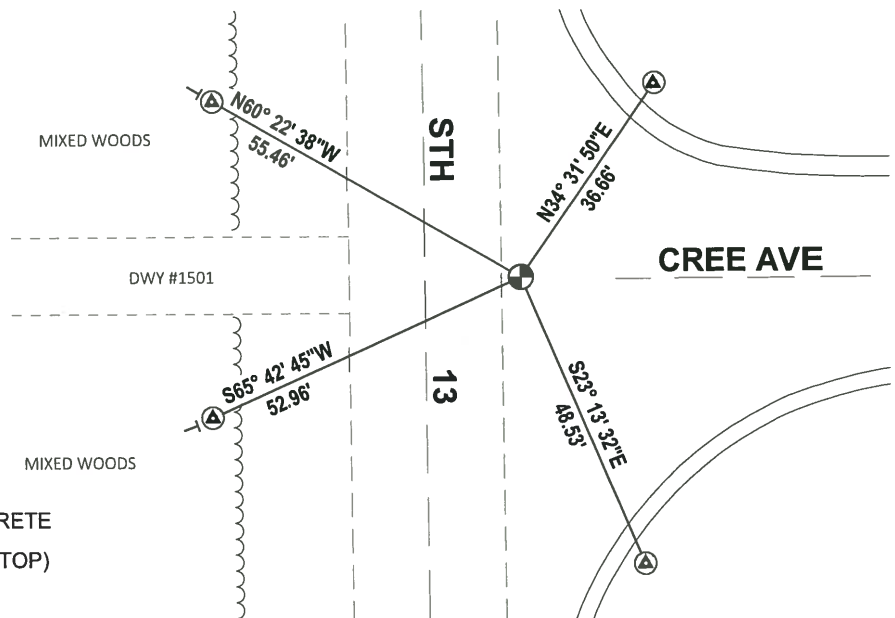
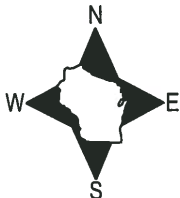
DATA SHOWN HERE ON THIS TIE SHEET IS CORRECT AND COMPLETE TO THE BEST OF MY KNOWLEDGE AND BELIEF.

PROFESSIONAL LAND SURVEYOR

DATE 8/2/19

TIE SKETCH

NOTE: THE CORNER FALLS 15'± EAST OF THE CENTERLINE OF STH 13 AND 0.5'± NORTH OF THE EXTENDED CENTERLINE OF CREE AVE.



- ⊙ FOUND WISDOT ALUMINUM CAP IN CONCRETE
- ⊕ FOUND HARRISON MONUMENT (BROKEN-TOP)
- | VINYL "T" POST

ADAMS COUNTY

Survey Monument Record

CORNER NO. 149

SECTION 17

TOWN 18

RANGE 6

TYPE OF MONUMENT: HARRISON

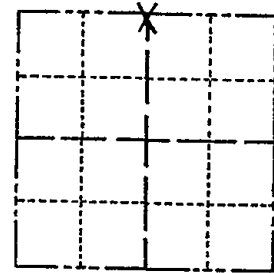
STATE PLANE COORDINATES: N _____

E _____

ELEVATION — M.S.L. DATUM: _____

THETA ANGLE: _____

FIELD BOOK: _____ PAGE _____



LOCATION
(Indicated by 'X')

SEAL:

BASIS FOR MONUMENT LOCATION

(Use reverse side if necessary)

Show info such as: History of corner, with reference to Vol. and pg, dates, surveyor; exact description of monument replaced; if location computed, by taped or EDM traverse; landowner remarks, etc.

Location determined from information gathered by a traverse of west $\frac{1}{2}$ of Sec. 17. Also chained along the north line of Sec 16.

~~9-15-08 ROAD CONSTRUCTION UNDERWAY
USE 40 COR. (MAG NAIL) AND HARRISON
AT N.E. CORNER TO RESET AFTER CONST.~~

SEE UPDATE 12-12-08 SJS
DENNIS CHRISTIE



OK 7-18-78 PK-SS

4-19-83 GR-SS 2 NEW TIES

2-23-88 " " OK

3-GONE, 2-NEW, PK IN BIT. 7-30-92 SG-BS

OK, 3-6-98, -JG

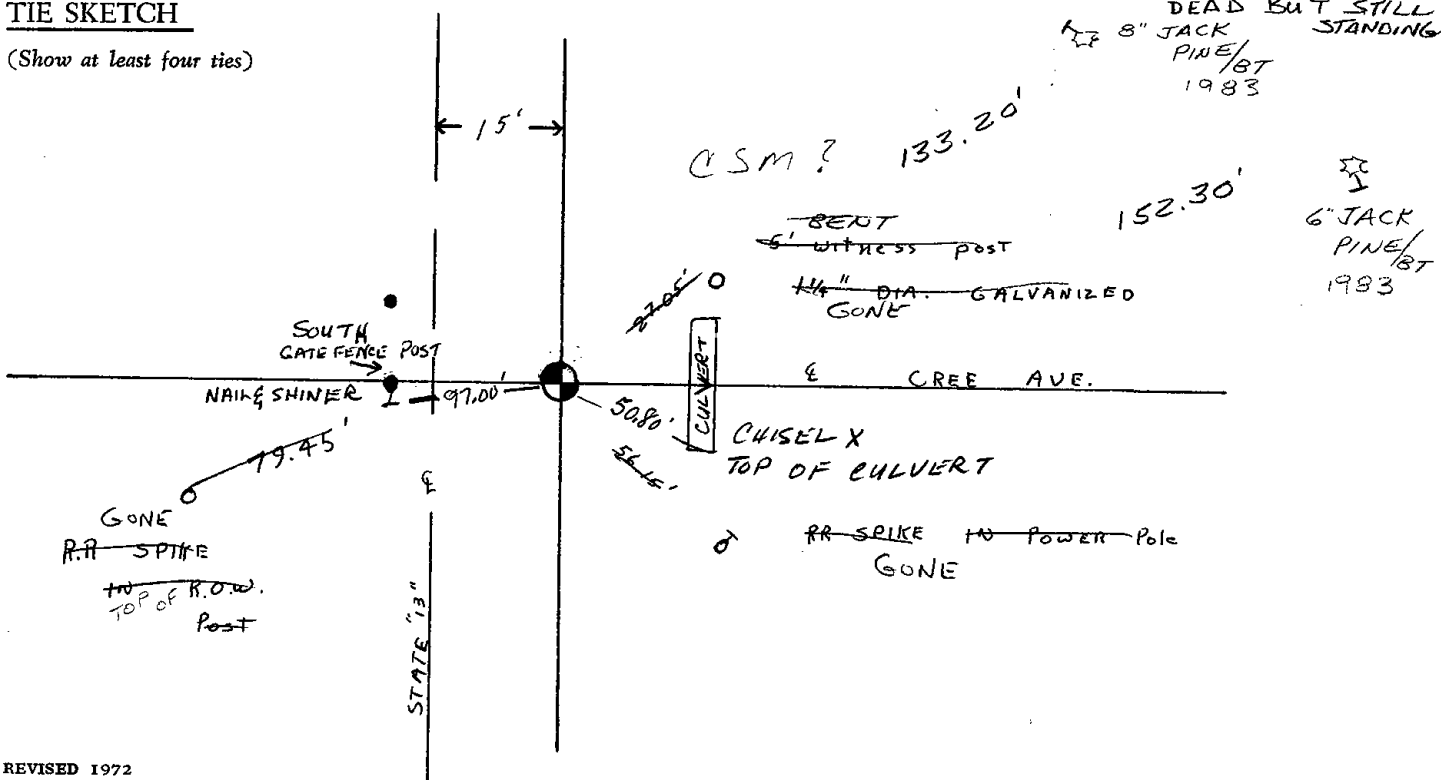
CERTIFIED CORRECT:

Anthony B. Kiedrowski
Registered Land Surveyor

DATE: 1/27/93

TIE SKETCH

(Show at least four ties)

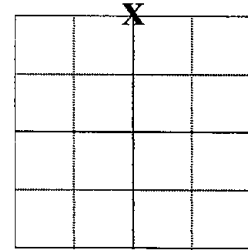


ADAMS COUNTY

Survey Monument Record

TYPE OF MONUMENT: Berntsen Nail
 STATE PLANE COORDINATES: N _____
 E _____
 ELEVATION — M.S.L. DATUM: _____
 THETA ANGLE: _____
 FIELD BOOK: _____ PAGE _____
 DRAWN BY: D. Christie

CORNER NO. 44
 SECTION 17
 TOWN 18 N
 RANGE 6 E



LOCATION
(Indicated by 'X')

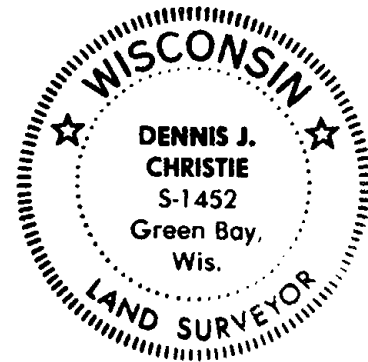
BASIS FOR MONUMENT LOCATION

(Use reverse side if necessary)

Show info such as: History of corner, with reference to Vol. and pg, dates, surveyor; exact description of monument replaced; if location computed, by taped or EDM traverse; landowner remarks, etc.

SEAL:

Found "PK" nail on 9-8-2008, prior to 2008 Resurfacing Project. Set new reference monuments (4" Alum. Disks set in concrete) on 10-2-2008. Re-set section corner on 11-3-2008 and measured Ties.



CERTIFIED CORRECT:

Dennis J. Christie
 Registered Land Surveyor

Date: 12-12-2008

TIE SKETCH

(Show at least four ties)

