

09
SECTION

18
TOWN

06
RANGE

ADAMS COUNTY

COUNTY CORNER NO: 46

ROMPORTOL ID: 41806090020

PUBLIC LAND SURVEY MONUMENT RECORD

TYPE OF MONUMENT: SURVEY NAIL

ADAMS COUNTY COORDINATES, NAD 83 (2007)

N. 245320.568

E. 538759.655

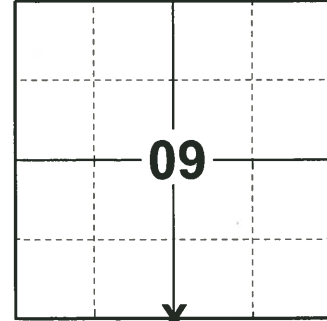
ELEVATION- - - - - DATUM - - - - -

FIELD WORK DATE: 06/04/2019

BASIS FOR MONUMENT LOCATION

1974 - PLS 1103 TRAVERSE INDICATED POSITION OF CORNER TO BE ADJACENT TO TWO FENCE LINES, ONE NORTH-BOUND AND ON SOUTH-BOUND. DID NOT EXCAVATE BECAUSE LOCATION WAS IN PREVIOUSLY EXCAVATED AREA AROUND CULVERT. LOCATED CORNER OPPOSITE FENCE LINES. SET HARRISON MONUMENT.

2019 - PLS 2675 FOUND NO EVIDENCE OF THE CORNER DUE TO RECENT CULVERT REPLACEMENT, BUT 1 TIE AND 2 WITNESSES WERE FOUND. SET A SURVEY NAIL PER THE TIE AND WITNESSES. WHICH FITS WELL WHEN PULLED WITH A TAPE. ACCEPTED THE TIED LOCATION AS THE CORNER LOCATION. SET A SURVEY NAIL AT THE TIED LOCATION AND 4 TIES. MEASURED TO THE TIES AND WITNESSES.



LOCATION

(INDICATE CORNER BY "X")

SEAL:



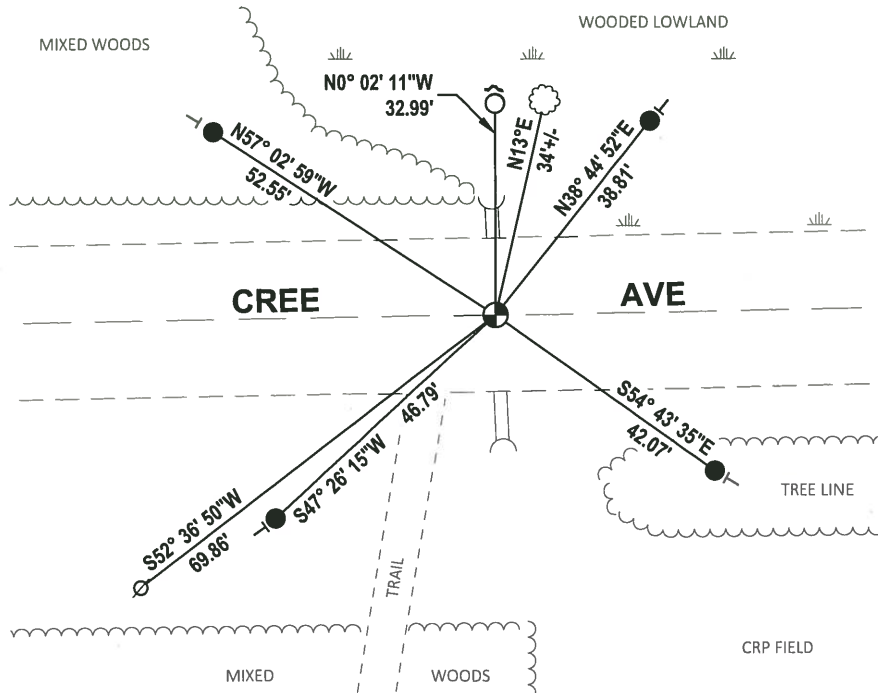
DATA SHOWN HERE ON THIS TIE SHEET IS CORRECT AND COMPLETE TO THE BEST OF MY KNOWLEDGE AND BELIEF.

PROFESSIONAL LAND SURVEYOR

DATE 8/2/19

TIE SKETCH

NOTE: THE CORNER FALLS ON THE CENTERLINE OF CREE AVE.



- SET 3/4" x 18" IRON REBAR, 1.50#/FT
- FOUND 3/4" IRON ROD
- ⊕ SET SURVEY NAIL
- ⊙ WITNESS POWER POLE
- ┘ STEEL FENCE POST
- └ VINYL "T" POST
- ⊗ WITNESS TREE

ADAMS COUNTY

CORNER NO. 369

Survey Monument Record

SECTION 16

TYPE OF MONUMENT: Top 10" HARRISON

TOWN 18

STATE PLANE COORDINATES: N

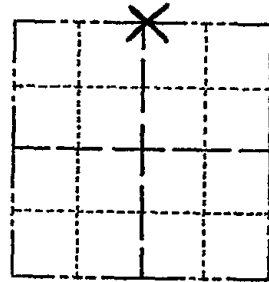
RANGE 6

E

ELEVATION - M.S.L. DATUM:

THETA ANGLE:

FIELD BOOK: III PAGE 15



LOCATION (Indicated by 'X')

SEAL:



BASIS FOR MONUMENT LOCATION

(Use reverse side if necessary)

Show info such as: History of corner, with reference to Vol. and pg, dates, surveyor; exact description of monument replaced; if location computed, by taped or EDM traverse; landowner remarks, etc.

Traverse indicated position of corner to be adjacent to two fencelines, one North-bound and one South-bound. Did not excavate because location was in previously excavated area around culvert. Located corner opposite fence lines. Set Harrison monument.

- OK 7-18-78 PR-SS
OK 3-4-83 SS
" 2-23-88 GR-SS
" 7-30-92 PS-JG
1-GONE, 2-NEW, MON. DIC, 2-25-98-JG
OK, 12-17-62-JG

CERTIFIED CORRECT:

Dale C. Hagen
Registered Land Surveyor
DATE: May 1, 1974

TIE SKETCH

1-GONE, 1-NEW, 11-27-07-JG

(Show at least four ties)

