

12
SECTION

18
TOWN

06
RANGE

ADAMS COUNTY

COUNTY CORNER NO: 52

ROMPORTOL ID: 41806120020

PUBLIC LAND SURVEY MONUMENT RECORD

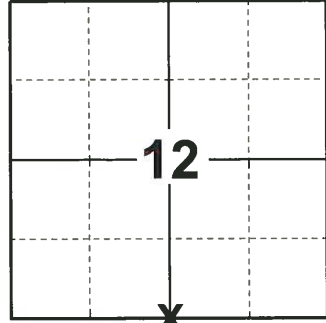
TYPE OF MONUMENT: HARRISON
ADAMS COUNTY COORDINATES, NAD 83 (2007)

N. 245520.509

E. 554540.983

ELEVATION- _____ DATUM _____

FIELD WORK DATE: 06/03/2019



LOCATION

(INDICATE CORNER BY "X")

BASIS FOR MONUMENT LOCATION

1977 - PLS 1103 RAN EDM/TRANSIT TRAVERSE AROUND SECTIONS 1 AND 12, AND PARTS OF ADJOINING SECTIONS TO DETERMINE SEARCH AREA FOR INVESTIGATION. EXCAVATION WITH BACKHOE YIELDED NO EVIDENCE OF THE ORIGINAL CORNER OR ANY REMONUMENTATION. COULD FIND NO BEARING TREES. RELOCATED CORNER BY DINGLE PROPORTIONATE MEASURE ON LINE BETWEEN ADJACENT SECTION CORNERS. SET HARRISON MONUMENT.

2019 - PLS 2675 FOUND A HARRISON MONUMENT 18" BELOW THE WATER AND 1 TIE. THE MONUMENT AGREES WITH THE EXISTING TIE. ACCEPTED THE HARRISON MONUMENT AS THE CORNER LOCATION. SET 3 NEW TIES AND MEASURED TO THE TIES.

SEAL:



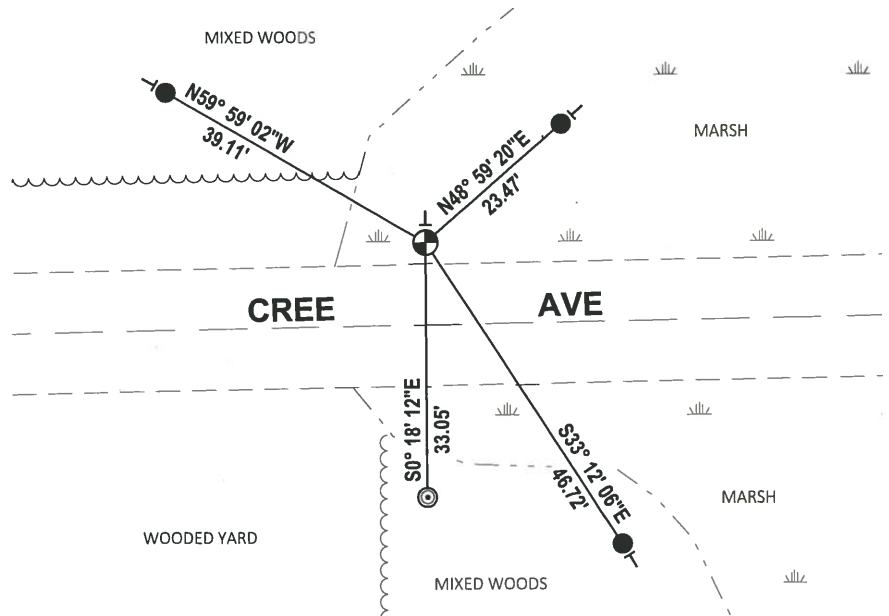
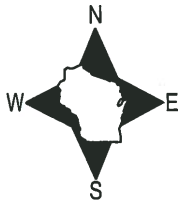
DATA SHOWN HERE ON THIS TIE SHEET IS CORRECT AND COMPLETE TO THE BEST OF MY KNOWLEDGE AND BELIEF.

PROFESSIONAL LAND SURVEYOR

DATE 8/2/19

TIE SKETCH

NOTE: THE CORNER FALLS 11'± NORTH OF THE CENTERLINE OF CREE AVE.



- SET 3/4" x 18" IRON REBAR, 1.50#/FT
- ⊙ FOUND 2-3/8" O.D. IRON PIPE
- ⊕ FOUND HARRISON MONUMENT
- VINYL "T" POST

ADAMS COUNTY

Survey Monument Record

TYPE OF MONUMENT: HARRISON

STATE PLANE COORDINATES: N _____

E _____

ELEVATION — M.S.L. DATUM: _____

THETA ANGLE: _____

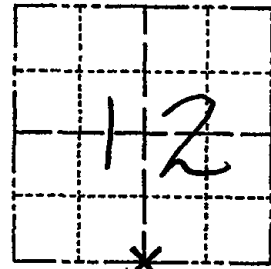
FIELD BOOK: 38 PAGE 29

CORNER NO. 52

SECTION 12

TOWN 18

RANGE 6



LOCATION
(Indicated by 'X')

SEAL:

BASIS FOR MONUMENT LOCATION

(Use reverse side if necessary)

Show info such as: History of corner, with reference to Vol. and pg, dates, surveyor; exact description of monument replaced; if location computed, by taped or EDM traverse; landowner remarks, etc.

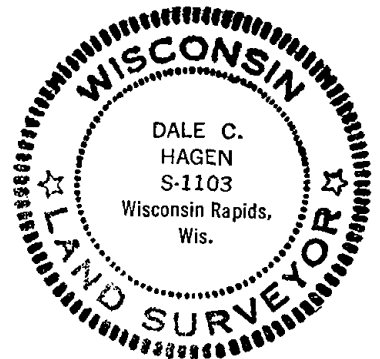
Ran EDM/transit traverse around Sections 1 and 12, and parts of adjoining sections to determine search area for investigation.

Excavation with backhoe yielded no evidence of the original corner or any remonumentation. Could find no bearing trees.

Relocated corner by single proportionate measure on line between adjacent section corners.

Set Harrison on 12-15-76.

- OK 11-22-78 RN-SS
- " 3-17-83 GR-SS
- " 2-23-88 " "
- " 8-7-92 JG-BS
- " 2-25-98 JG
- " 1-3-03 MR



CERTIFIED CORRECT

Dale C Hagen
Registered Land Surveyor
DATE: 7-5-77

TIE SKETCH 1-NEW, MON. OK, 11-27-07-JG

(Show at least four ties)

NOTE

Ties in trees to nail in disc.

