

15  
SECTION

18  
TOWN

06  
RANGE

# ADAMS COUNTY

COUNTY CORNER NO: 58

ROMPORTOL ID: 41806152000

## PUBLIC LAND SURVEY MONUMENT RECORD

TYPE OF MONUMENT: HARRISON  
ADAMS COUNTY COORDINATES, NAD 83 (2007)

N. 242723.183

E. 546653.868

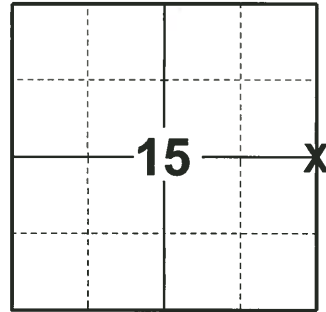
ELEVATION- \_\_\_\_\_ DATUM \_\_\_\_\_

FIELD WORK DATE: 12/17/2019

### BASIS FOR MONUMENT LOCATION

1981 - PLS 1167 SEARCHED AREA FOR EVIDENCE OF ORIGINAL MONUMENT AND FOR REMONUMENTED CORNER. UNABLE TO LOCATE EITHER. SET HARRISON MONUMENT MIDWAY ON A STRAIGHT LINE BETWEEN ADJACENT CORNERS.

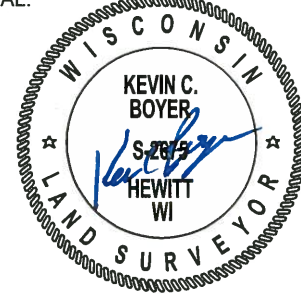
2019 - PLS 2675 FOUND HARRISON 2" ABOVE THE GROUND AND 1 WITNESS TREE. THE MONUMENT AGREE WITH THE WITNESS TREE. ACCEPTED THE HARRISON AS THE CORNER LOCATION. SET 4 NEW TIES AND MEASURED TO THE EXISTING WITNESS.



### LOCATION

(INDICATE CORNER BY "X")

SEAL:



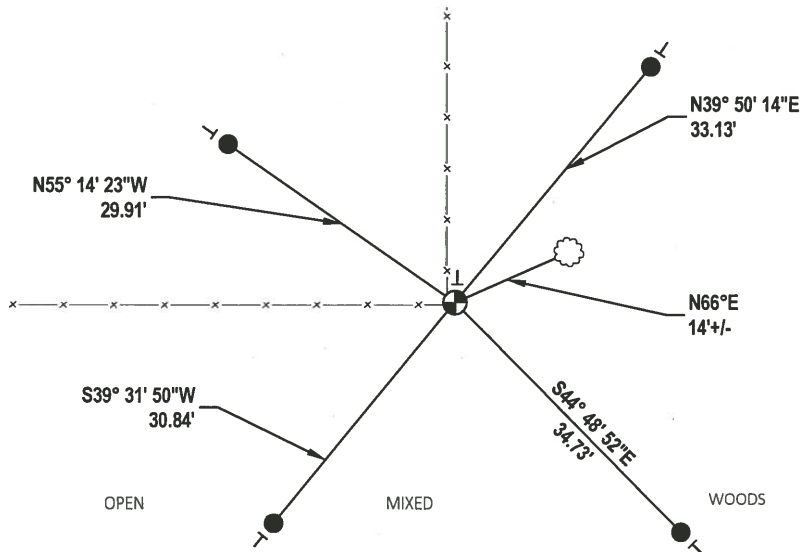
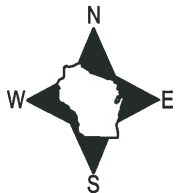
DATA SHOWN HERE ON THIS TIE SHEET IS CORRECT AND COMPLETE TO THE BEST OF MY KNOWLEDGE AND BELIEF.

PROFESSIONAL LAND SURVEYOR

DATE 1/9/2020

### - TIE SKETCH

NOTE: THE CORNER LANDS 1± EAST OF POST.

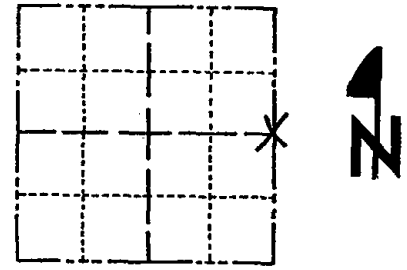


- SET 3/4" x 18" IRON REBAR, 1.50#/FT
- ⊕ FOUND HARRISON MONUMENT
- ┆ VINYL "T" POST
- ☼ WITNESS TREE

# Government Land Corner Certificate

Adams County  
 TYPE OF MONUMENT: HARRISON  
 STATE PLANE COORDINATES: N \_\_\_\_\_  
 E \_\_\_\_\_  
 ELEVATION — M.S.L. DATUM: \_\_\_\_\_  
 THETA ANGLE: \_\_\_\_\_  
 FIELD BOOK: 66 PAGE \_\_\_\_\_  
 DRAWN BY: Basler

CORNER NO. 58  
 SECTION 15  
 TOWN 18  
 RANGE 6E



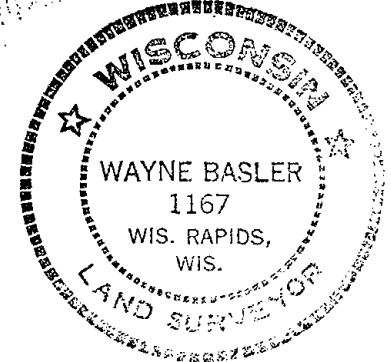
LOCATION  
(Indicated by 'X')

## BASIS FOR MONUMENT LOCATION

Show info such as: History of corner, with reference to Vol. and pg., dates, surveyor; exact description of monument replaced; if location computed, by taped or EDM traverse; landowner remarks, etc. (Use reverse side if necessary)

Searched area for evidence of original mon. and for remonumented cor. We were unable to locate either. Set corner midway on a straight line between adjacent corners.

SEAL:



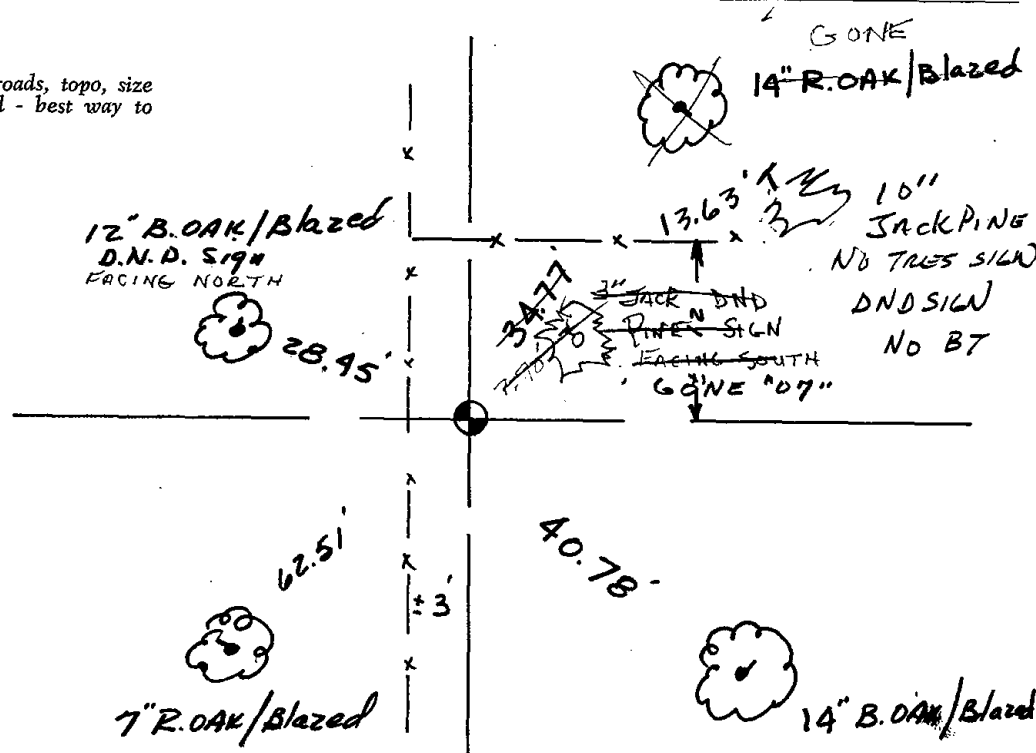
DATA SHOWN HERE ON  
CERTIFIED CORRECT:

Wayne Basler  
Registered Land Surveyor

DATE: 6-15-81

## TIE SKETCH

Show at least four ties, also fence lines, roads, topo, size and type of witness trees and if off road - best way to arrive at corner.



RECEIVED  
6/30/81

