

PUBLIC LAND SURVEY MONUMENT RECORD

TYPE OF MONUMENT: HARRISON
 ADAMS COUNTY COORDINATES, NAD 83 (2007)

N. 242827.962

E. 551930.297

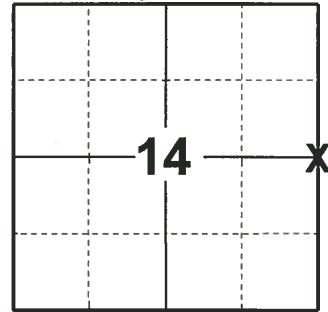
ELEVATION- - - - - DATUM - - - - -

FIELD WORK DATE: 12/17/2019

BASIS FOR MONUMENT LOCATION

1981 - PLS 1167 SEARCHED AREA, FOUND NO EVIDENCE OF MONUMENT. SET HARRISON ON A STRAIGHT LINE MIDWAY BETWEEN NW CORNER & SW CORNER 13-18-6E.

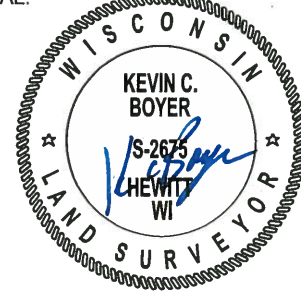
2019 - PLS 2675 FOUND HARRISON 2" ABOVE THE GROUND AND 3 WITNESS TREES. THE MONUMENT AGREES WITH ALL 3 WITNESS TREES. ACCEPTED THE HARRISON AS THE CORNER LOCATION. SET 4 NEW TIES AND MEASURED TO THE EXISTING WITNESS TREES.



LOCATION

(INDICATE CORNER BY "X")

SEAL:



DATA SHOWN HERE ON THIS TIE SHEET IS CORRECT AND COMPLETE TO THE BEST OF MY KNOWLEDGE AND BELIEF.

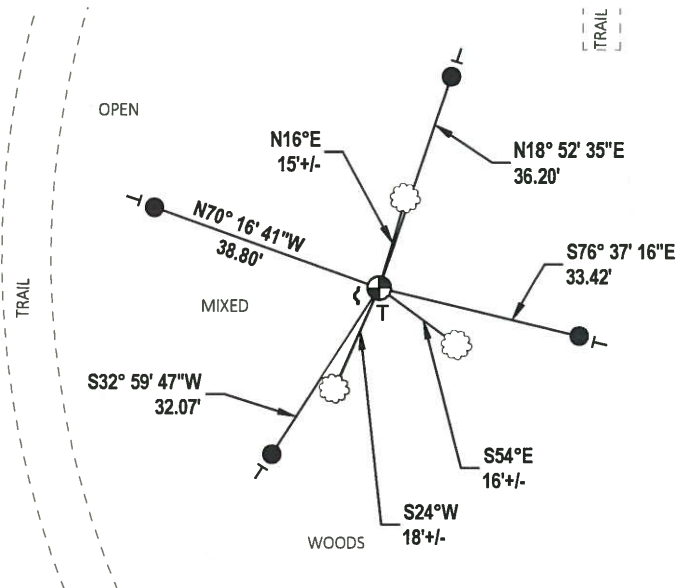
PROFESSIONAL LAND SURVEYOR

DATE 1/9/2020

- TIE SKETCH



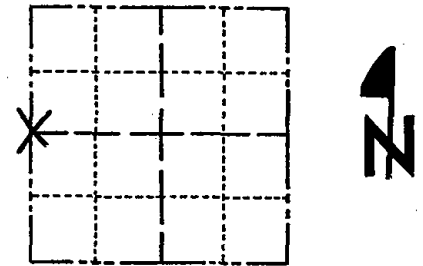
- SET 3/4" x 18" IRON REBAR, 1.50#/FT
- ⊕ FOUND HARRISON MONUMENT
- ~ STEEL FENCE POST
- VINYL "T" POST
- ☼ WITNESS TREE



Government Land Corner Certificate

ADAMS County
 TYPE OF MONUMENT: HARRISON
 STATE PLANE COORDINATES: N _____
 E _____
 ELEVATION — M.S.L. DATUM: _____
 THETA ANGLE: _____
 FIELD BOOK: LL PAGE _____
 DRAWN BY: Basler

CORNER NO. 59
 SECTION 13
 TOWN 18
 RANGE 6E



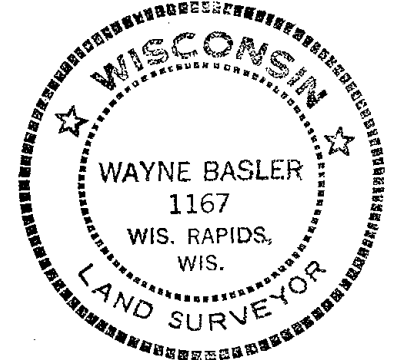
BASIS FOR MONUMENT LOCATION

Show info such as: History of corner, with reference to Vol. and pg., dates, surveyor; exact description of monument replaced; if location computed, by taped or EDM traverse; landowner remarks, etc. (Use reverse side if necessary)

Searched area, found no evidence of monument. Set Corner on a straight line midway between NW Cor. & SW Cor. 13-18-6E.

SEAL:

LOCATION
(Indicated by 'X')



DATA SHOWN HERE ON CERTIFIED CORRECT:

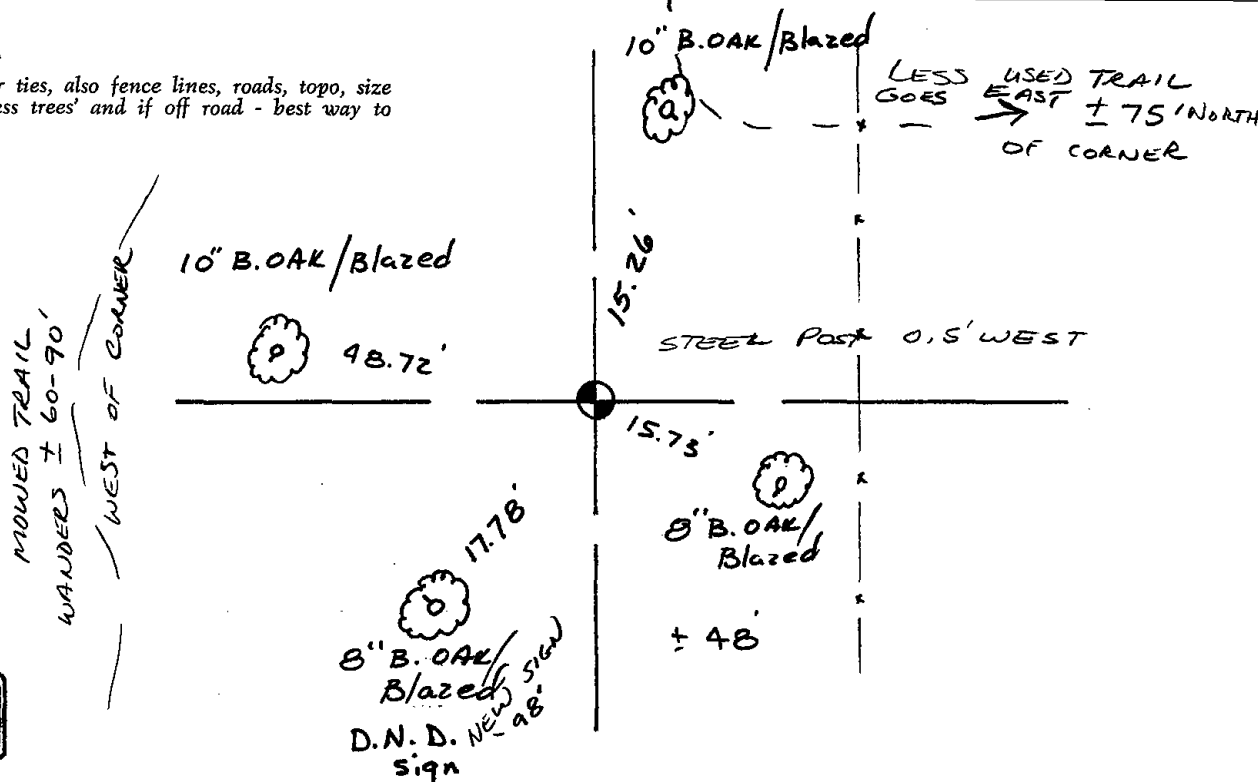
Wayne Basler
 Registered Land Surveyor

DATE: May 15, 1981

TRAIL, CAN SEE Distant POWER POLES TO THE NORTH

TIE SKETCH

Show at least four ties, also fence lines, roads, topo, size and type of witness trees' and if off road - best way to arrive at corner.



RECEIVED
6/30/81

