

17  
SECTION

18  
TOWN

06  
RANGE

# ADAMS COUNTY

COUNTY CORNER NO.: 64

ROMPORTOL ID: 41806170020

## PUBLIC LAND SURVEY MONUMENT RECORD

TYPE OF MONUMENT: SURVEY NAIL  
ADAMS COUNTY COORDINATES, NAD 83 (2007)

N. 240028.364

E. 533587.811

ELEVATION- - - - - DATUM - - - - -

FIELD WORK DATE: 06/10/2019

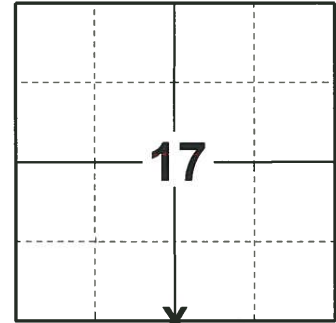
### BASIS FOR MONUMENT LOCATION

1972 - PLS 878 FOUND A CONCRETE MONUMENT, REPLACED SAME WITH A HARRISON MONUMENT SET ABOUT 12" BELOW GRADE AND A RAILROAD SPIKE WAS SET ABOVE THE MONUMENT.

YEAR UNKNOWN - PLS 1478 HELD RAILROAD SPIKE AS THE CORNER POSITION.

2014 - PLS 2643 BEFORE THE START OF ROAD CONSTRUCTION THE RAILROAD SPIKE WAS FOUND IN GOOD CONDITION. AFTER THE COMPLETION OF THE ROAD WORK ALONG STATE HIGHWAY 21 THE RAILROAD SPIKE WAS REPLACED BY A SNM 1 BERNTSEN MARKING NAIL AND 4 NEW WITNESS TIES WERE SET TO REFERENCE THE CORNER LOCATION.

2019 - PLS 2675 FOUND SURVEY NAIL IN THE ROAD SURFACE AND 5 TIES. REMOVED THE SURVEY NAIL AND FOUND NO OTHER EVIDENCE OF ANY ADDITIONAL MONUMENTS BELOW. THE SURVEY NAIL LOCATION AGREES WITH ALL 5 TIES. ACCEPTED THE SURVEY NAIL LOCATION AS THE CORNER LOCATION. RESET THE SURVEY NAIL AND MEASURED TO THE EXISTING TIES.



LOCATION

(INDICATE CORNER BY "X")

SEAL:



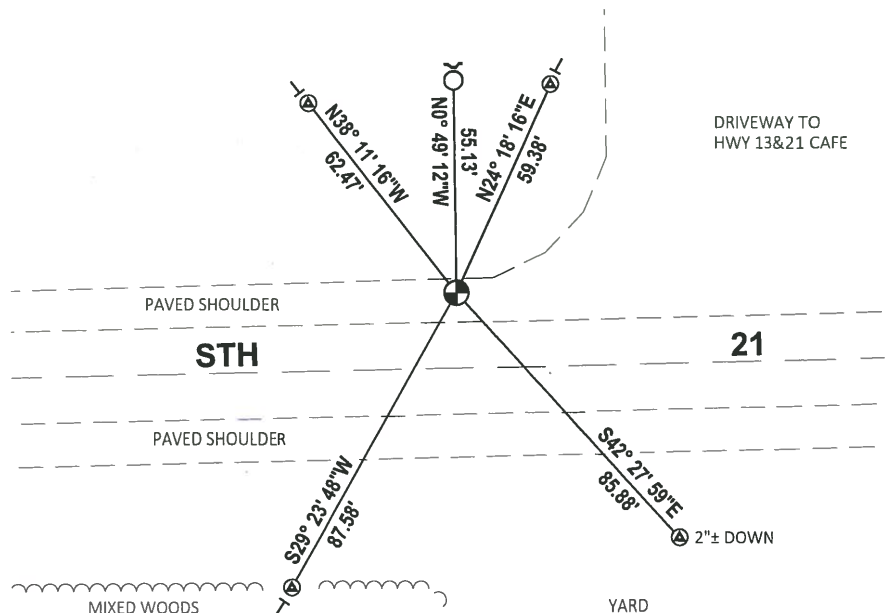
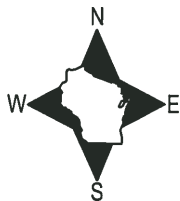
DATA SHOWN HERE ON THIS TIE SHEET IS CORRECT AND COMPLETE TO THE BEST OF MY KNOWLEDGE AND BELIEF.

PROFESSIONAL LAND SURVEYOR

DATE 8/2/19

### TIE SKETCH

NOTE: THE CORNER FALLS 20'± NORTH OF THE CENTERLINE OF STH 21.



- ⊙ SET BERNTSEN SDDR103 W/BRONZE CAP
- FOUND 3/4" IRON ROD
- ⊕ FOUND SURVEY NAIL MONUMENT
- ↗ STEEL FENCE POST
- ┌ VINYL "T" POST

# ADAMS COUNTY

## Survey Monument Record

TYPE OF MONUMENT: CONCRETE R.R. SPIKE '98

STATE PLANE COORDINATES: N \_\_\_\_\_  
E \_\_\_\_\_

ELEVATION — M.S.L. DATUM: \_\_\_\_\_

THETA ANGLE: \_\_\_\_\_

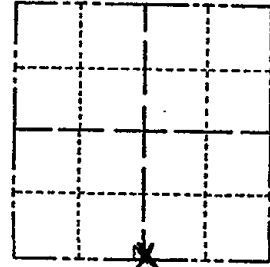
FIELD BOOK: 103 PAGE 148

CORNER NO. 167

SECTION 17

TOWN 18

RANGE 6



LOCATION  
(Indicated by 'X')

SEAL:

### BASIS FOR MONUMENT LOCATION

(Use reverse side if necessary)

Show info such as: History of corner, with reference to Vol. and pg, dates, surveyor; exact description of monument replaced; if location computed, by taped or EDM traverse; landowner remarks, etc.

Found concrete monument stamped  $\frac{1}{4}$  Corner

July 31, 1972

Anthony B. Kiedrowski R.L.S. 878



OK 7-18-78 PK-55

" 3-4-83 SS

" 2-23-88 GR-55

" 7-29-92 JG-35

SET R.R. SPIKE 4-23-98 JG-55

BASED ON CSM'S TO SOUTH

CERTIFIED CORRECT:

*Anthony B. Kiedrowski*  
Registered Land Surveyor

DATE: 2-2-73

**TIE SKETCH** TIES OK 1-22-03 RR.SPIKE @ CORNER - JG  
OK, 11-15-07 - JG-55

(Show at least four ties)

NOTE: MONUMENT BURIED  
12" ± DEEP

