

PUBLIC LAND SURVEY MONUMENT RECORD

TYPE OF MONUMENT: HARRISON
ADAMS COUNTY COORDINATES, NAD 83 (2007)

N. 240134.736

E. 544028.251

ELEVATION- DATUM

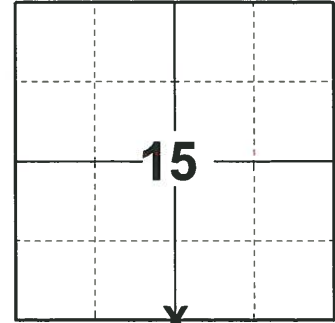
FIELD WORK DATE: 06/10/2019

BASIS FOR MONUMENT LOCATION

1977 - PLS 1103 SET HARRISON MONUMENT.

2014 - PLS 2643 PRIOR TO THE CONSTRUCTION OF HIGHWAY 21 THE HARRISON MONUMENT WAS RECOVERED IN GOOD CONDITION ON THE NORTH SIDE OF THE HIGHWAY AT THE TOP OF THE DITCH. AFTER HIGHWAY 21 CONSTRUCTION THE CORNER WAS VERIFIED IN GOOD CONDITION AND HELD AS THE CORNER POSITION. 4 NEW WITNESS MONUMENTS WERE SET TO REFERENCE THE MONUMENT LOCATION.

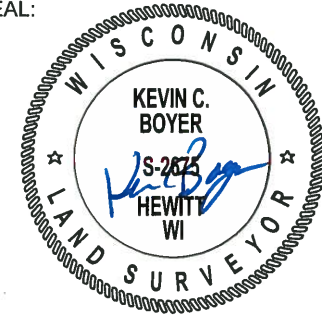
2019 - PLS 2675 FOUND HARRISON MONUMENT FLUSH WITH THE GROUND AND 4 TIES AND 2 WITNESSES. THE MONUMENT AGREES WITH ALL 4 TIES. ACCEPTED THE HARRISON AS THE CORNER LOCATION AND MEASURED TO THE FOUND TIES AND WITNESSES.



LOCATION

(INDICATE CORNER BY "X")

SEAL:



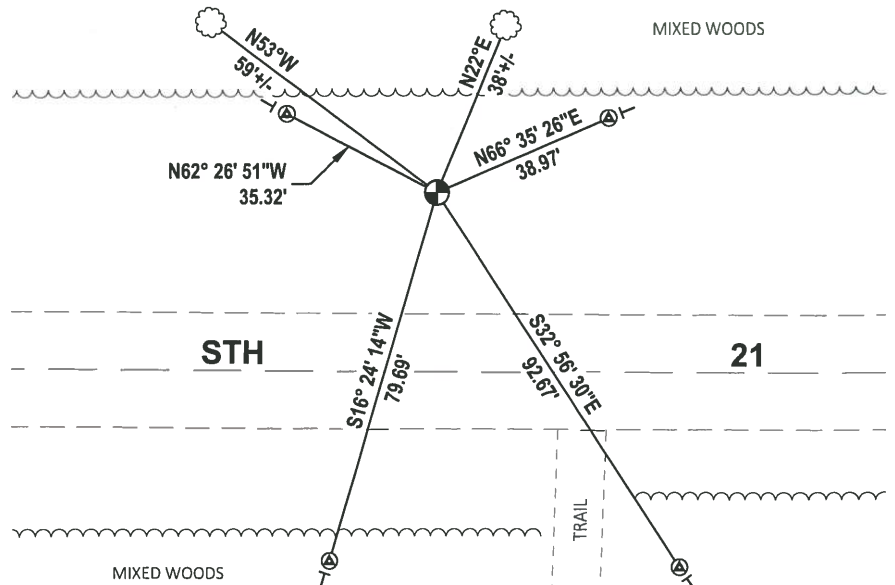
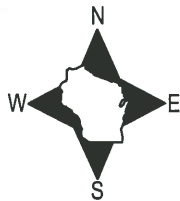
DATA SHOWN HERE ON THIS TIE SHEET IS CORRECT AND COMPLETE TO THE BEST OF MY KNOWLEDGE AND BELIEF.

PROFESSIONAL LAND SURVEYOR

DATE 8/2/19

- TIE SKETCH

NOTE: THE CORNER FALLS 37'± NORTH OF THE CENTERLINE OF STH 21.

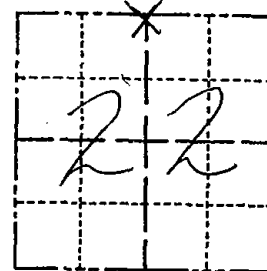


- ⊙ FOUND BERNTSEN SDDR103 W/BRONZE CAP
- ⊕ FOUND HARRISON MONUMENT
- ⊥ VINYL "T" POST
- ☁ WITNESS TREE

Government Land Corner Certificate

ADAMS County
 TYPE OF MONUMENT: Harrison
 STATE PLANE COORDINATES: N _____
 E _____
 ELEVATION — M.S.L. DATUM: _____
 THETA ANGLE: _____
 FIELD BOOK: 57 PAGE 30
 DRAWN BY: Roger Nuber

CORNER NO. 68
 SECTION 22
 TOWN 18
 RANGE 6



LOCATION
 (Indicated by 'X')

BASIS FOR MONUMENT LOCATION

Show info such as: History of corner, with reference to Vol. and pg., dates, surveyor; exact description of monument replaced; if location computed, by taped or EDM traverse; landowner remarks, etc. (Use reverse side if necessary)

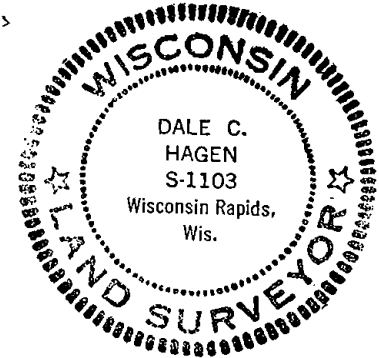
Ran EDM/T2 traverse around Section 22, 15,16 and many adjoining sections to determine search area for investigation.

Found monumentation used by M.C. Smith, Adams County Surveyor, in 1911 (Vol. 2, Page 134 of Adams County Survey Records) in the staking of the Southwest 1/4 of the Southwest Quarter of Section 15. Found Stone at NE and NW corner of said Forty and the West Quarter corner of Section 15.

Using this data, was able to reconstruct Northwest and North Quarter corners of Section 22. Did not excavate at North Quarter corner because search area falls in cut-section of ditch line.

Set Harrison monument .

SEAL:



DATA SHOWN HERE ON
 CERTIFIED CORRECT:

Dale C. Hagen
 Registered Land Surveyor

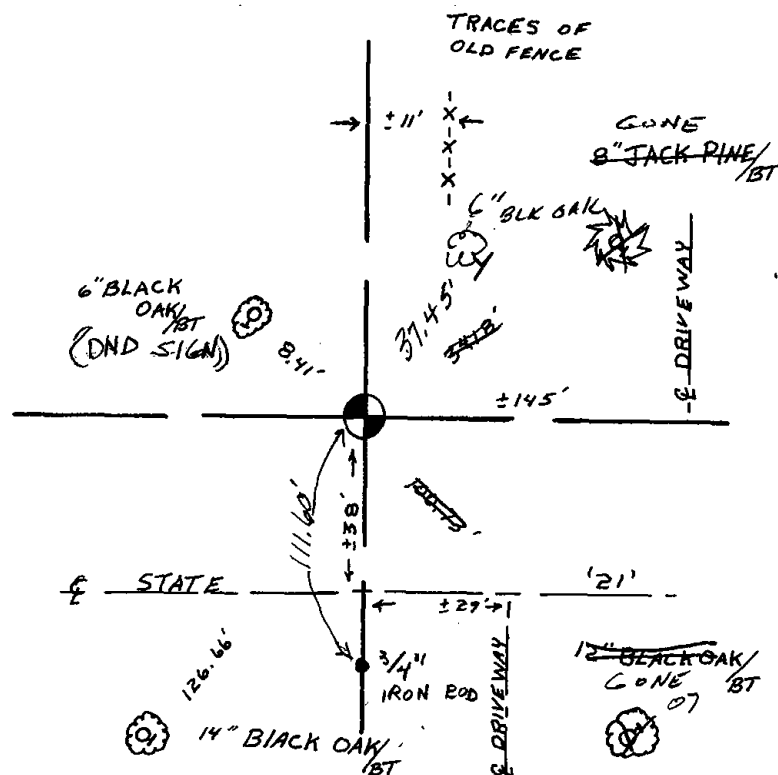
DATE: November 9, 1977

TIE SKETCH

Show at least four ties, also fence lines, roads, topo, size and type of witness trees' and if off road - best way to arrive at corner.

NOTE

Ties in trees to nail in disc.



MAINTENANCE RECORD

Date	Init.	Remarks
3-4-83	SS	O.K.
3-10-88	GR-SS	TOP BROKEN - TIES OK
7-30-92	JG-B5	O.K.
3-6-98	JG	1-GONE, 1-NEW
1-13-03	JG-SS	1-NEW, MON. OK
12-20-07	JG-SS	1-GONE, 2-NEW, MON. OK