

PUBLIC LAND SURVEY MONUMENT RECORD

TYPE OF MONUMENT: SURVEY NAIL
 ADAMS COUNTY COORDINATES, NAD 83 (2007)

N. 240091.811

E. 546656.685

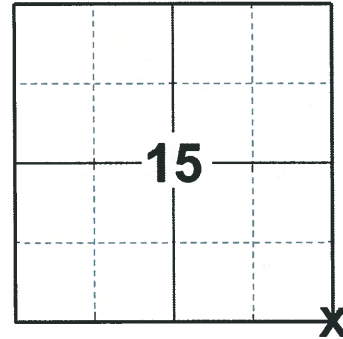
ELEVATION- - - - - DATUM - - - - -

FIELD WORK DATE: 06/10/2019

BASIS FOR MONUMENT LOCATION

2014 - PLS 2643 RECALLS THE MOST RECENT TIE SHEET OF RECORD WAS FILED BY G. RHINEHART ON DECEMBER 2, 2013. ON THAT TIE SHEET THE MONUMENT IT LOOKS LIKE A MAG NAIL WAS FOUND IN 2007. PRIOR TO THE CONSTRUCTION ON HIGHWAY 21 THE MAG NAIL OR THE RAILROAD SPIKE WERE NOT RECOVERED. THE CORNER POSITION WAS THEN CALCULATED BY USING THE HARN MONUMENT TO THE SOUTHWEST AND THE IRON ROD TO THE NORTH. AFTER THE COMPLETION OF THE HIGHWAY CONSTRUCTION A BERNTSEN SNM 1 NAIL WAS SET AT THE CORNER POSITION AND 4 WITNESS MONUMENTS WERE SET AS SHOWN BELOW TO REFERENCE THE CORNER LOCATION.

2019 - PLS 2675 FOUND SURVEY NAIL IN THE ROAD SURFACE AND 4 TIES. THE SURVEY NAIL DOES NOT AGREE WITH ANY OF THE EXISTING TIES. DID NOT LOOK FOR ANY ADDITIONAL MONUMENTS DUE TO RECENT ROAD CONSTRUCTION ON STH 21. THE SURVEY NAIL WAS VERIFIED WITH AND AGREES WITH SURROUNDING SECTION SUMMARIES OF SECTIONS 14, 15, 22, AND 23. ACCEPTED THE SURVEY NAIL AS THE CORNER LOCATION. MEASURED TO THE EXISTING TIES, A FOUND PROPERTY IRON, NGS MONUMENT (PRESTON C GPS DH5660) AND 2 WITNESS TREES.



LOCATION
 (INDICATE CORNER BY "X")

SEAL:



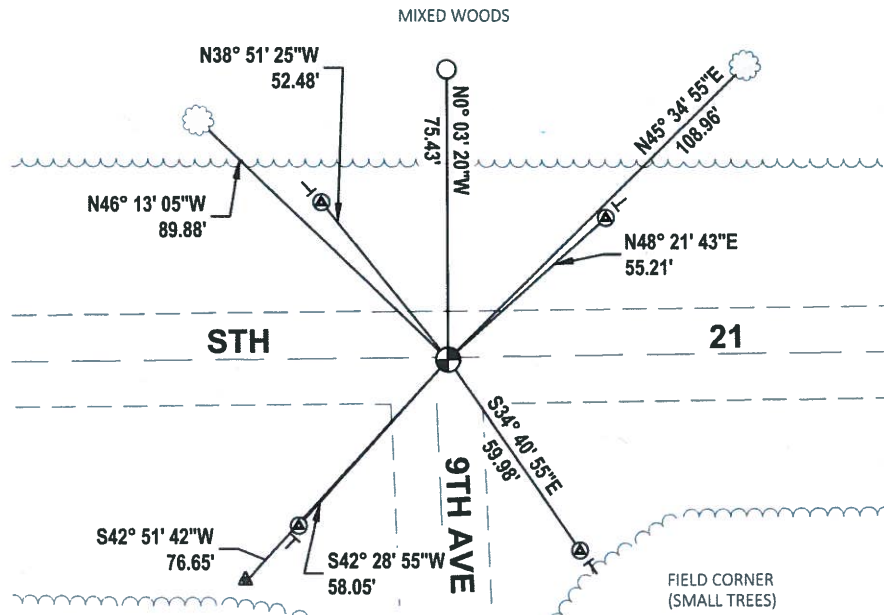
DATA SHOWN HERE ON THIS TIE SHEET IS CORRECT AND COMPLETE TO THE BEST OF MY KNOWLEDGE AND BELIEF.

PROFESSIONAL LAND SURVEYOR

DATE 3/25/2020

TIE SKETCH

NOTE: THE CORNER FALLS 0.5'± SOUTH OF THE CENTERLINE OF STH 21 AND 3'± EAST OF THE CENTERLINE OF 9TH AVE.



- ▲ FOUND HARN MONUMENT
- ⊙ FOUND BERNTSEN SDR103 W/BRONZE CAP
- FOUND 3/4" IRON ROD
- ⊕ FOUND SURVEY NAIL MONUMENT
- VINYL "T" POST
- ☼ WITNESS TREE

ADAMS COUNTY U.S. PUBLIC LAND SURVEY MONUMENT LOCATION RECORD

SECTION 22
TOWNSHIP 18 N
RANGE 6 E

69
NO.

LANDMARK BENCHMARK _____

FOUND
SET
RESET
RE-TIED

CORNER IDENTITY: NE CORNER SEC. 22 (BERNTSEN SNM1 NAIL)

PRESTON
CITY, VILLAGE, TOWN

MARATHON COUNTY COORDINATE: N: 240091.728

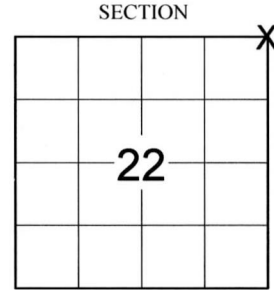
E: 546661.751

ELEVATION-(FEET): _____ DATUM: _____

WEATHER: SUNNY

DATE OF SURVEY: 7/14/2014 TEMPERATURE: 70 °F

SURVEY PARTY: KYLE R. FISCHER



LOCATION
(Indicated By X)

BASIS FOR MONUMENT LOCATION:

(DESCRIBE METHOD OF SURVEY AND CORNER AUTHENTICATION)

The most recent tie sheet of record was filed by Gregory Rhinehart on December 2, 2013. On that tie sheet the monument it looks like a mag nail was found in 2007.

Prior to the construction on Highway 21 the mag nail or the railroad spike were not recovered. The corner position was then calculated by using the Harn monument to the Southwest and the iron rod to the North. After the completion of the Highway construction a Berntsen SNM 1 nail was set at the corner position and four witness monuments were set as shown below to reference the corner location.



CERTIFIED CORRECT:

Kyle R. Fischer

KYLE R. FISCHER, S-2643
Registered Land Surveyor

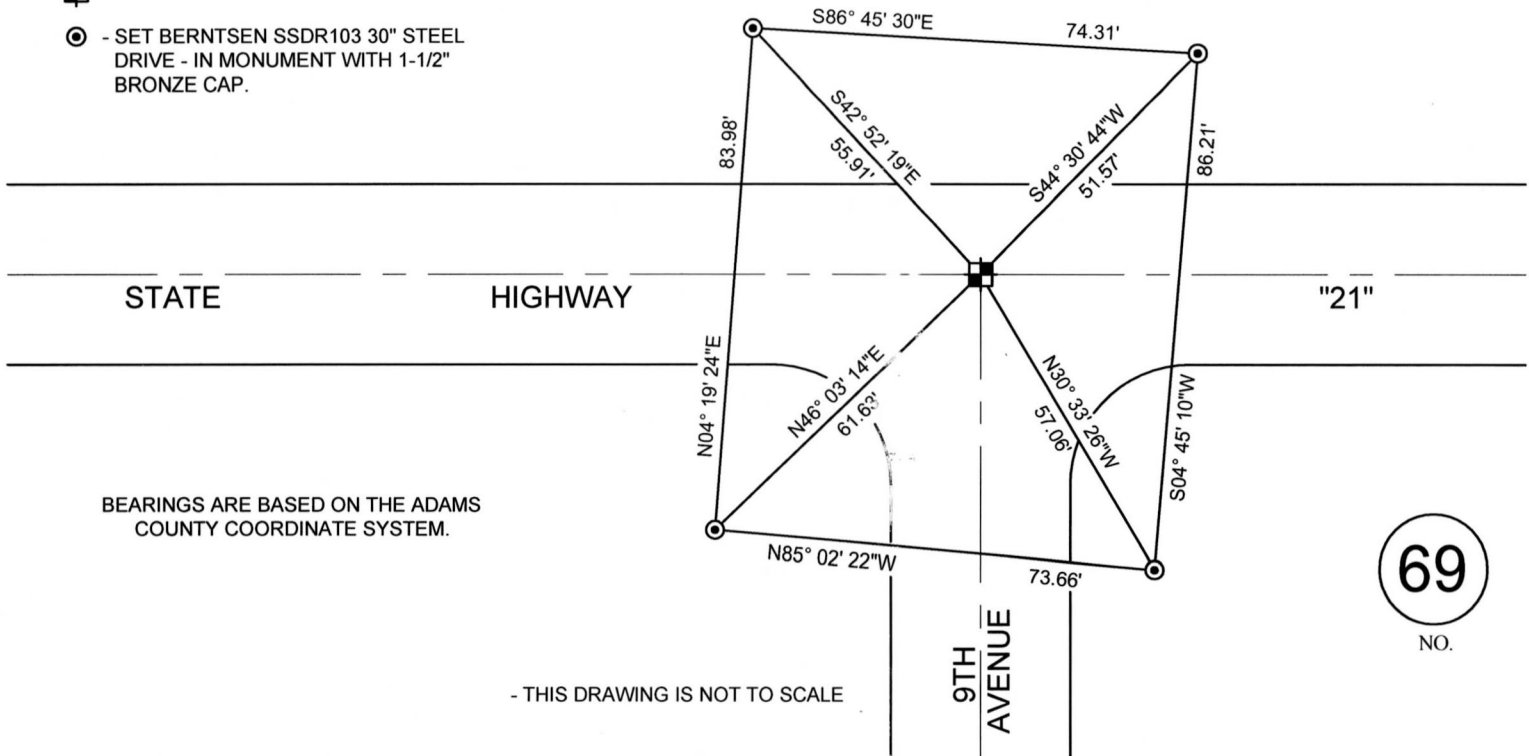
Aug 14, 2014

FIELD BOOK NO. S-11 PAGE NO. 66

COMPANY RIVERSIDE LAND SURVEYING LLC

TIE SKETCH:

- SET BERNTSEN SNM1 NAIL
- SET BERNTSEN SSSDR103 30" STEEL DRIVE - IN MONUMENT WITH 1-1/2" BRONZE CAP.



BEARINGS ARE BASED ON THE ADAMS COUNTY COORDINATE SYSTEM.

- THIS DRAWING IS NOT TO SCALE

69
NO.