

PUBLIC LAND SURVEY MONUMENT RECORD

TYPE OF MONUMENT: SURVEY NAIL
 ADAMS COUNTY COORDINATES, NAD 83 (2007)

N. 240141.602

E. 549294.434

ELEVATION- _____ DATUM _____

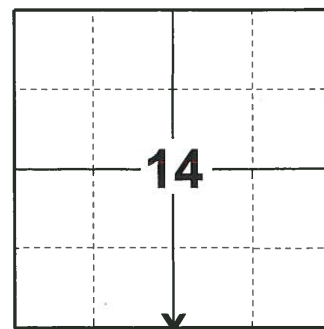
FIELD WORK DATE: 06/05/2019

BASIS FOR MONUMENT LOCATION

1981 - PLS 1167 RAILROAD SPIKE SET BY SINGLE PROPORTIONATE.

2014 - PLS 2643 PRIOR TO THE CONSTRUCTION OF HIGHWAY 21 THE RAILROAD SPIKE WAS NOT RECOVERED AND THE WITNESS TIES OF RECORD WERE ALL DESTROYED. AFTER GOING THROUGH THE ADAMS COUNTY SURVEY RECORDS CSM 5379 WAS FOUND. THE CORNERS OF THE CSM WERE LOCATED AND USED TO RE-ESTABLISH THE CORNER POSITION. THE CALCULATED POSITION FIT THE FOUND P.K. NAIL AND THE DISTANCE TO THE SOUTHEAST CORNER OF SECTION 14 AS SHOWN ON CSM 5379. AFTER THE COMPLETION OF THE HIGHWAY CONSTRUCTION A SNM 1 BERNTSEN MARKING NAIL WAS SET AT THE CORNER POSITION AND 4 NEW WITNESS TIES WERE SET TO REFERENCE THE CORNER.

2019 - PLS 2675 FOUND SURVEY NAIL IN THE ROAD SURFACE AND 4 TIES, REMOVED THE SURVEY NAIL AND FOUND NO OTHER EVIDENCE OF ANY ADDITIONAL MONUMENT BELOW. THE SURVEY NAIL LOCATION AGREES WITH ALL 4 TIES. ACCEPTED THE SURVEY NAIL LOCATION AS THE CORNER LOCATION. RESET A SURVEY NAIL IN ITS ORIGINAL LOCATION AND MEASURED TO THE EXISTING TIES.



LOCATION

(INDICATE CORNER BY "X")

SEAL:



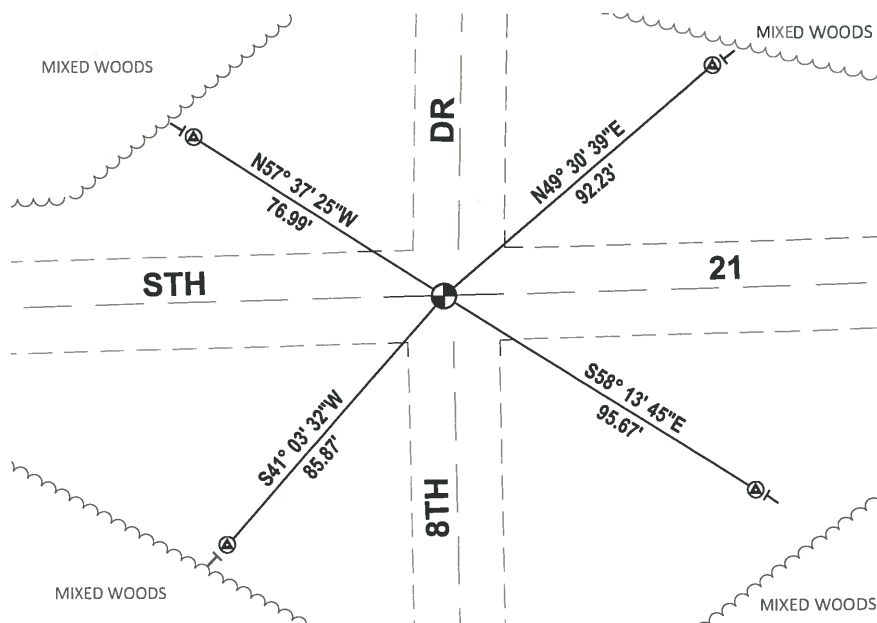
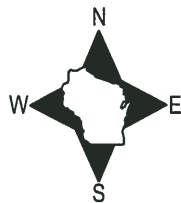
DATA SHOWN HERE ON THIS TIE SHEET IS CORRECT AND COMPLETE TO THE BEST OF MY KNOWLEDGE AND BELIEF.

PROFESSIONAL LAND SURVEYOR

DATE 8/2/19

- TIE SKETCH

NOTE: THE CORNER FALLS ON THE CENTER LINE OF STH 21 AND 4'± WEST OF THE CENTERLINE OF 8TH DR.

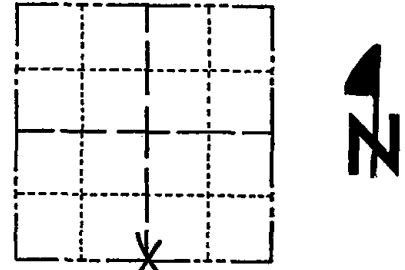


- ⊕ FOUND BERNTSEN SDR103 W/BRONZE CAP
- ⊕ FOUND SURVEY NAIL MONUMENT
- VINYL "T" POST

Government Land Corner Certificate

Adams County
 TYPE OF MONUMENT: R.R. Spk. w/cross
 STATE PLANE COORDINATES: N _____
 E _____
 ELEVATION — M.S.L. DATUM: _____
 THETA ANGLE: _____
 FIELD BOOK: LL PAGE _____
 DRAWN BY: BASLER

CORNER NO. 70
 SECTION 14
 TOWN 18
 RANGE 6E



LOCATION
 (Indicated by 'X')

BASIS FOR MONUMENT LOCATION

Show info such as: History of corner, with reference to Vol. and pg., dates, surveyor; exact description of monument replaced; if location computed, by taped or EDM traverse; landowner remarks, etc. (Use reverse side if necessary)

Ran EDM traverse around parts of sections 14 & 15 & 23 to determine search area. Search area falls in pavement of STH "21", no excavation was attempted. Could find no evidence of accessory monuments or resurveys. Set corner by single proportionate measure between section corners on a straight line.

SEAL:



DATA SHOWN HERE ON CERTIFIED CORRECT:

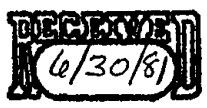
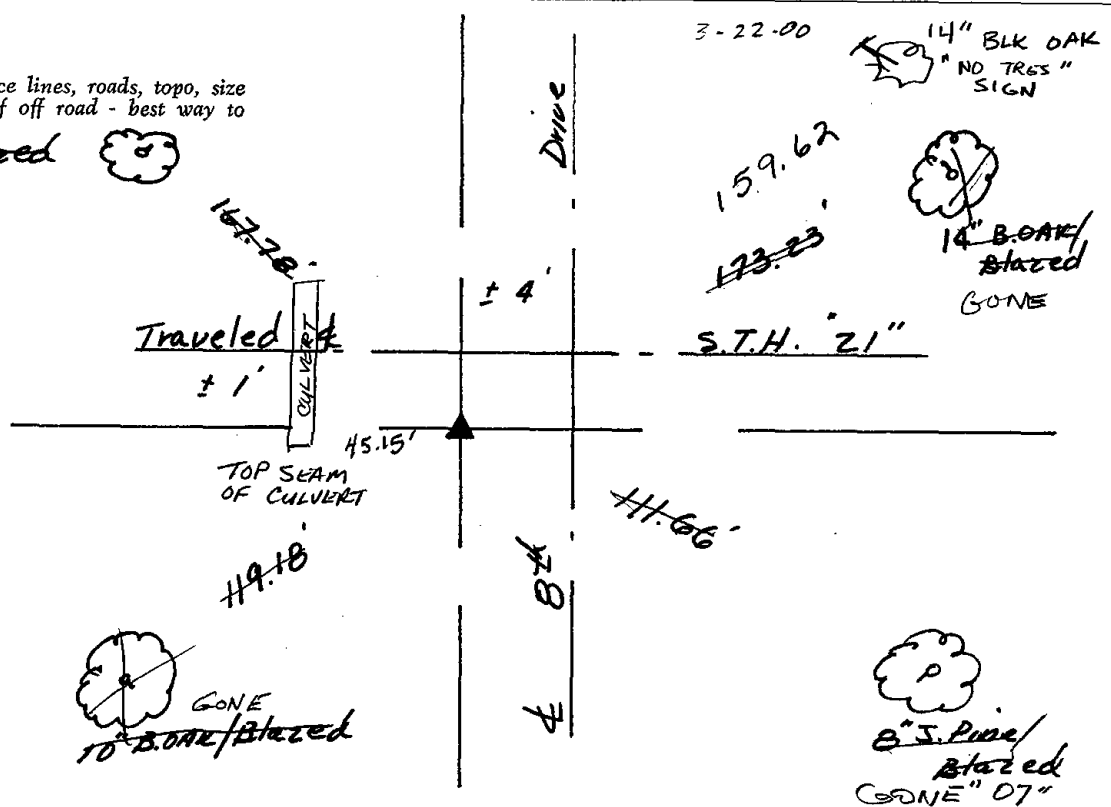
Wayne Basler
 Registered Land Surveyor

DATE: May 15, 1981

TIE SKETCH

Show at least four ties, also fence lines, roads, topo, size and type of witness trees and if off road - best way to arrive at corner.

10" J. Pine/blazed
 GONE '07"



10" B. Oak/blazed
 GONE

8" J. Pine/blazed
 GONE '07"

