

14 SECTION 18 TOWN 06 RANGE

ADAMS COUNTY

COUNTY CORNER NO: 71
ROMPORTOL ID: 41806140000

PUBLIC LAND SURVEY MONUMENT RECORD

TYPE OF MONUMENT: SURVEY NAIL
ADAMS COUNTY COORDINATES, NAD 83 (2007)

N. 240191.243

E. 551932.447

ELEVATION- _____ DATUM _____

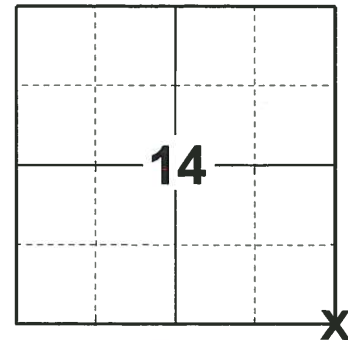
FIELD WORK DATE: 06/10/2019

BASIS FOR MONUMENT LOCATION

1979 - PLS 1478 SET HARRISON MONUMENT AND TIED OUT.

2014 - PLS 2643 PRIOR TO THE CONSTRUCTION OF HIGHWAY 21 A P.K. NAIL WAS RECOVERED AT THE CORNER POSITION. THE P.K POSITION FIT THE RECORDED DISTANCE TO THE SOUTH $\frac{1}{4}$ AS SHOWN ON CSM 5379 AND WAS HELD AS THE CORNER POSITION. AFTER THE COMPLETION OF THE HIGHWAY CONSTRUCTION A SNM 1 BERNTSEN MARKING NAIL WAS SET AT THE CORNER POSITION AND 4 NEW WITNESS MONUMENTS WERE SET TO REFERENCE THE CORNER POSITION.

2019 - PLS 2675 FOUND SURVEY NAIL IN THE ROAD SURFACE AND 4 TIES, REMOVED THE SURVEY NAIL AND FOUND NO OTHER EVIDENCE OF ANY ADDITIONAL MONUMENTS BELOW. THE SURVEY NAIL POSITION AGREES WITH ALL 4 TIES. ACCEPTED THE SURVEY NAIL LOCATION FOR THE CORNER LOCATION. RESET THE SURVEY NAIL AND MEASURED TO THE EXISTING TIES.



LOCATION

(INDICATE CORNER BY "X")

SEAL:



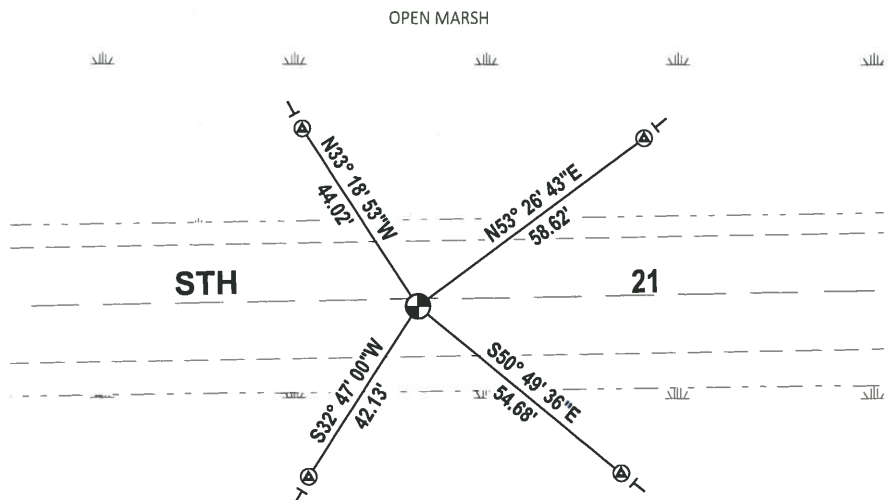
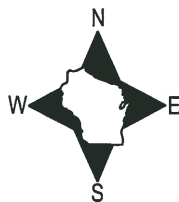
DATA SHOWN HERE ON THIS TIE SHEET IS CORRECT AND COMPLETE TO THE BEST OF MY KNOWLEDGE AND BELIEF.

PROFESSIONAL LAND SURVEYOR

DATE 8/2/19

- TIE SKETCH

NOTE: THE CORNER FALLS 2± SOUTH OF THE CENTERLINE OF STH 21.



- ⊙ FOUND BERNTSEN SSSR103 W/BRONZE CAP
- ⊕ FOUND SURVEY NAIL MONUMENT
- ⊖ VINYL "T" POST

Government Land Corner Certificate

ADAMS County

CORNER NO. 71
 SECTION 13
 TOWN 18
 RANGE 6

TYPE OF MONUMENT: ~~HARRISON~~ TEMP RR SET.

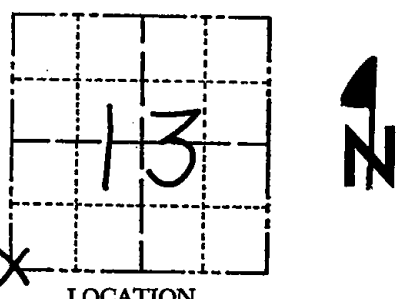
STATE PLANE COORDINATES: N _____
 E _____

ELEVATION — M.S.L. DATUM: _____

THETA ANGLE: _____

FIELD BOOK: 54 PAGE 58

DRAWN BY: B. SULLIVAN



LOCATION
(Indicated by 'X')

BASIS FOR MONUMENT LOCATION

Show info such as: History of corner, with reference to Vol. and pg., dates, surveyor; exact description of monument replaced; if location computed, by taped or EDM traverse; landowner remarks, etc. (Use reverse side if necessary)

This corner was set at the intersection of the fences from the north and south and on the centerline of "21" this location was determined by comparing distances by M.C. Smith, A.J. Barrett and the D.O.T. all of which were very close to those measured now and by comparing 1/16th lines to the east and west. No excavation was attempted in "21".

SEAL:



DATA SHOWN HERE ON
CERTIFIED CORRECT:

Gregory P Rhinehart
Registered Land Surveyor

DATE: 7/10/79

TIE SKETCH

Show at least four ties, also fence lines, roads, topo, size and type of witness trees and if off road - best way to arrive at corner.

