

## PUBLIC LAND SURVEY MONUMENT RECORD

TYPE OF MONUMENT: HARRISON  
 ADAMS COUNTY COORDINATES, NAD 83 (2007)

N. 237368.014

E. 530950.208

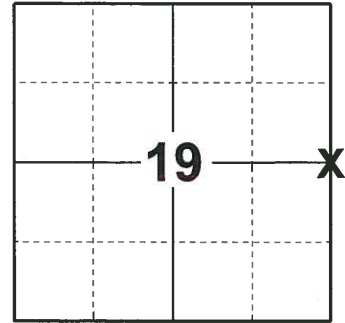
ELEVATION- \_\_\_\_\_ DATUM \_\_\_\_\_

FIELD WORK DATE: 06/13/2019

### BASIS FOR MONUMENT LOCATION

1978 - PLS 878 RAN EDM/T2 TRAVERSE OF SECTION 20 TO DETERMINE SEARCH AREAS AND TIE INTO EXISTING SURVEYS. DISTANCES TO ADJACENT SECTION CORNERS INDICATED THAT THE CONCRETE MONUMENT SET IN WILDWOOD ESTATES COULD NOT BE THE CORNER. A HARRISON MONUMENT WAS SET EQUIDISTANT AND ON LINE BETWEEN THE ADJACENT SECTION CORNERS AS THE QUARTER CORNER. THE DISTANCES TO THE ADJACENT SECTION CORNERS MATCH DISTANCES RECORDED IN THE ORIGINAL SURVEYS AND A SURVEY DON BY M.C. SMITH RECORDED IN VOL. 2 PG. 25 OF THE ADAMS CO SURVEYOR RECORDS.

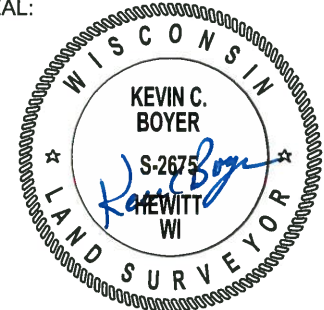
2019 - PLS 2675 FOUND A HARRISON MONUMENT 2" ABOVE THE GROUND SURFACE AND 2 WITNESS TREES. THE MONUMENT AGREES WITH THE EXISTING WITNESS TREES. ACCEPTED THE HARRISON MONUMENT AS THE CORNER LOCATION. SET 4 NEW TIES AND MEASURED TO THE TIES AND WITNESS TREES.



### LOCATION

(INDICATE CORNER BY "X")

SEAL:



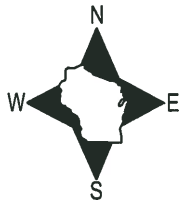
DATA SHOWN HERE ON THIS TIE SHEET IS CORRECT AND COMPLETE TO THE BEST OF MY KNOWLEDGE AND BELIEF.

PROFESSIONAL LAND SURVEYOR

DATE 8/2/19

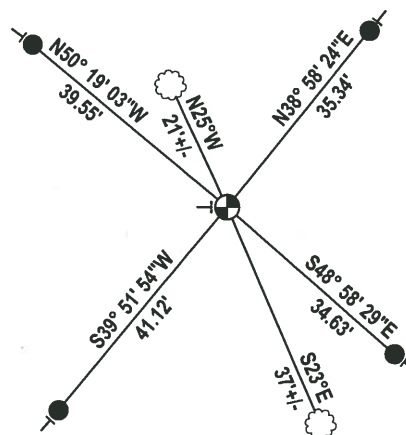
### TIE SKETCH

NOTE: THE CORNER FALLS 50'± SOUTH OF THE EDGE OF A GARDEN/LAWN.



GARDEN/LAWN

- SET 3/4" x 18" IRON REBAR, 1.50#/FT
- ⊕ FOUND HARRISON MONUMENT
- VINYL "T" POST
- ☼ WITNESS TREE



# Government Land Corner Certificate

ADAMS County

TYPE OF MONUMENT: HARRISON

STATE PLANE COORDINATES: N \_\_\_\_\_  
E \_\_\_\_\_

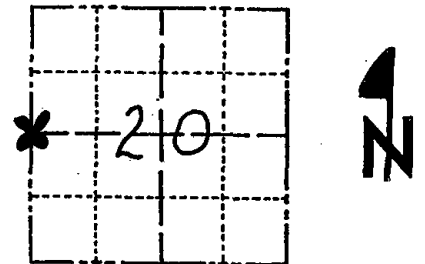
ELEVATION — M.S.L. DATUM: \_\_\_\_\_

THETA ANGLE: \_\_\_\_\_

FIELD BOOK: 54 PAGE 46

DRAWN BY: BETTY MERZ

CORNER NO. 75  
SECTION 20  
TOWN 18  
RANGE 6



LOCATION  
(Indicated by 'X')

## BASIS FOR MONUMENT LOCATION

Show info such as: History of corner, with reference to Vol. and pg., dates, surveyor; exact description of monument replaced; if location computed, by taped or EDM traverse; landowner remarks, etc. (Use reverse side if necessary)

Ran EDM/T2 traverse of Section 20 to determine search areas and tie into existing surveys. Distances to adjacent section corners indicated that the concrete monument set in Wildwood Estates could not be the corner. A Harrison Monument was set equidistant and on line between the adjacent section corners as the Quarter Corner. The distances to the adjacent section corners match distances recorded in the original surveys and a survey done by McC. Smith recorded in Vol. 2 PG. 25 of the Adams Co. Surveyor Records.

SEAL:



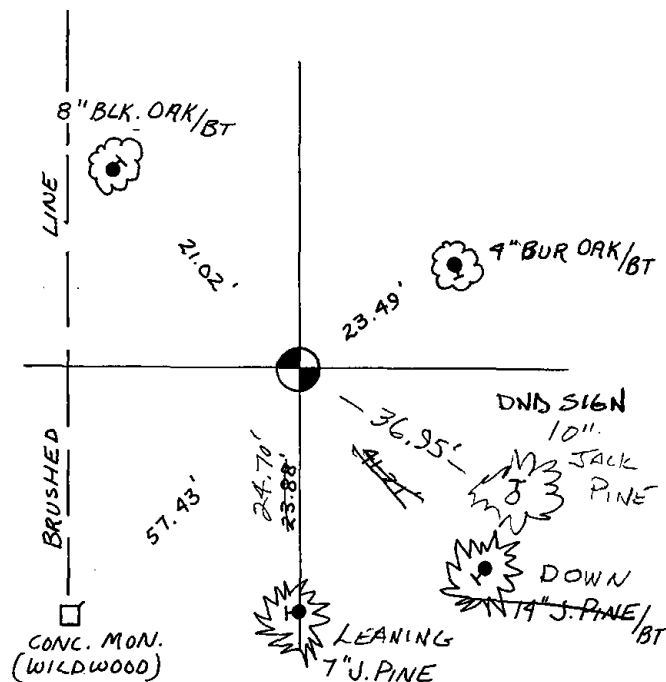
DATA SHOWN HERE ON CERTIFIED CORRECT:

*Anthony B. Kiedrowski*  
Registered Land Surveyor

DATE: 9/30/28

## TIE SKETCH

Show at least four ties, also fence lines, roads, topo, size and type of witness trees' and if off road - best way to arrive at corner.



## MAINTENANCE RECORD

Date	Init.	Remarks
3-4-83	SS	1 TIE GONE -
2-23-88	GR-SS	OK
7-29-92	JG-BS	1-GONE, 1-NEW, M&N, OK
2-3-98	JG	ALL OK
12-17-02	JG	OK
11-15-07	JS-JS	OK