

21
SECTION

18
TOWN

06
RANGE

ADAMS COUNTY

COUNTY CORNER NO: 77

ROMPORTOL ID: 41806212000

PUBLIC LAND SURVEY MONUMENT RECORD

TYPE OF MONUMENT: HARRISON
ADAMS COUNTY COORDINATES, NAD 83 (2007)

N. 237467.651

E. 541446.152

ELEVATION- _____ DATUM _____

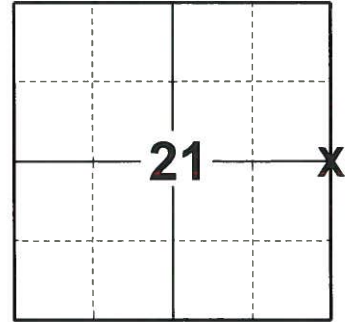
FIELD WORK DATE: 06/12/2019

BASIS FOR MONUMENT LOCATION

1978 - PLS 878 EXCAVATED WITH BACKHOE, FOUND BOTTOM OF ROTTED POST. NO SURVEYS OF RECORD. LOCATION VERIFIED BY TRAVERSE. SET HARRISON MONUMENT.

2013 - PLS 1478 REDREW TIE SHEET.

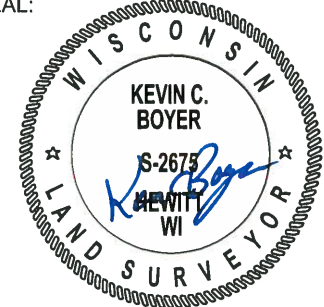
2019 PLS 2675 FOUND A HARRISON MONUMENT 2" BELOW THE ROAD SURFACE, 1 PROPERTY IRON AND 4 WITNESSES. THE MONUMENT AGREES WITH THE EXISTING WITNESSES. ACCEPTED THE HARRISON MONUMENT AS THE CORNER LOCATION. SET 3 NEW TIES AND MEASURED TO THE TIES, PROPERTY IRON AND WITNESSES.



LOCATION

(INDICATE CORNER BY "X")

SEAL:



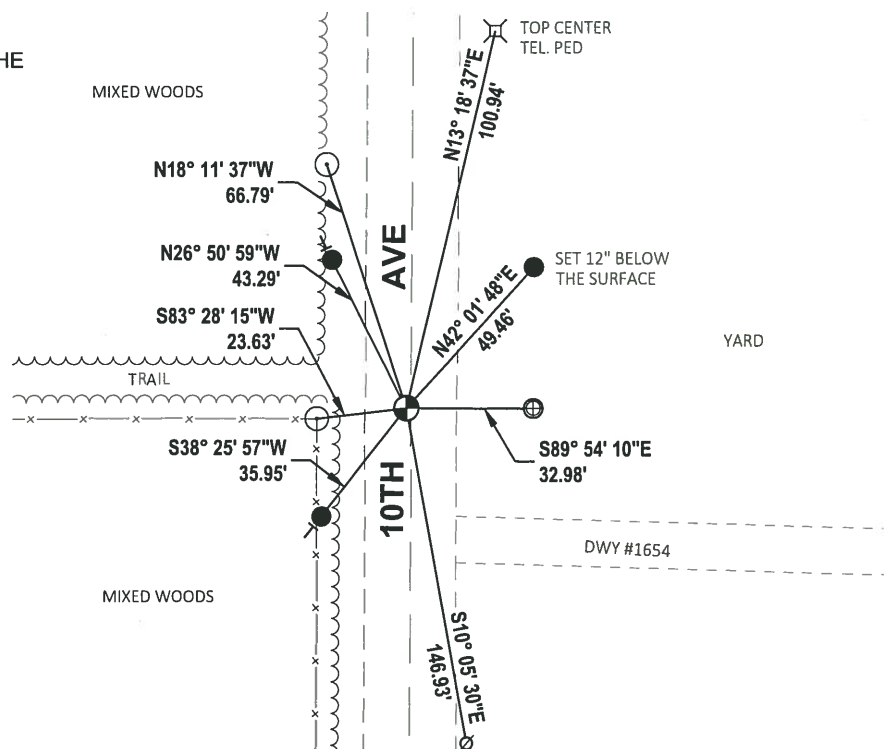
DATA SHOWN HERE ON THIS TIE SHEET IS CORRECT AND COMPLETE TO THE BEST OF MY KNOWLEDGE AND BELIEF.

PROFESSIONAL LAND SURVEYOR

DATE 8/2/19

TIE SKETCH

NOTE: THE CORNER FALLS 1½ WEST OF THE CENTERLINE OF 10TH AVE.



- SET 3/4" x 18" IRON REBAR, 1.50#/FT
- ⊕ FOUND 1" O.D. IRON PIPE
- ⊗ FOUND HARRISON MONUMENT
- ⊘ WITNESS POWER POLE
- FENCE POST
- └ VINYL "T" POST

NO CHARGE

Government Land Corner Certificate

ADAMS County

TYPE OF MONUMENT: HARRISON

STATE PLANE COORDINATES: N _____
E _____

ELEVATION — M.S.L. DATUM: _____

THETA ANGLE: _____

FIELD BOOK: 58 (57) PAGE 42 (54)

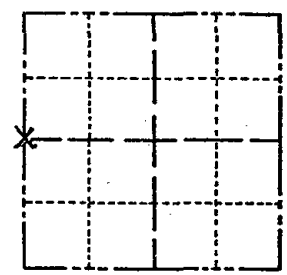
DRAWN BY: _____

CORNER NO. 77

SECTION 22

TOWN 18

RANGE 6



LOCATION
(Indicated by 'X')

BASIS FOR MONUMENT LOCATION

Show info such as: History of corner, with reference to Vol. and pg., dates, surveyor; exact description of monument replaced; if location computed, by taped or EDM traverse; landowner remarks, etc. (Use reverse side if necessary)

Excavated with backhoe, found bottom of rotted post. No surveys of record. Location verified by traverse.

SEAL:



DATA SHOWN HERE ON
CERTIFIED CORRECT:

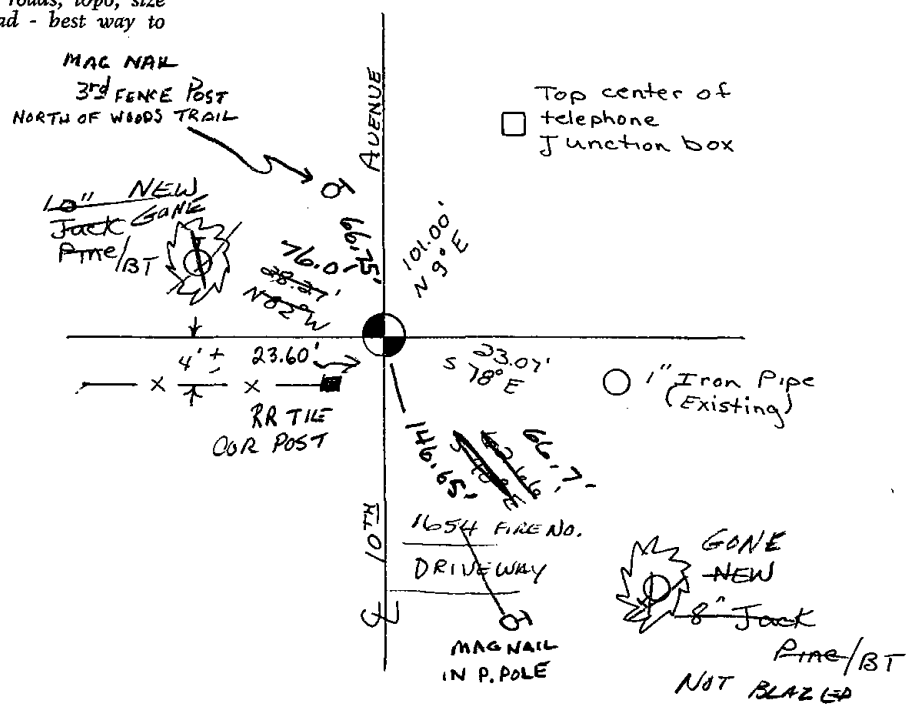
Anthony B. Kiedrowski
Registered Land Surveyor

DATE: 8-1-78

3-2-83 — S.S. — O.K.
2-2-88 GR-55 "
1-NEW, MON O.K., 7-30-92 JG-BS
2-GONE, 2-NEW 2-2-98 — JG
2-GONE, 2-NEW, MON. O.K., 12-13-02 — JG
OK 11-21-07

TIE SKETCH

Show at least four ties, also fence lines, roads, topo, size and type of witness trees and if off road - best way to arrive at corner.

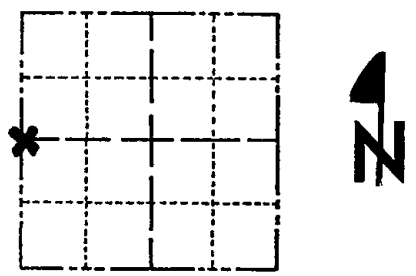


Return to correct basis 11/4/81

Government Land Corner Certificate

ADAMS County
 TYPE OF MONUMENT: HARRISON
 STATE PLANE COORDINATES: N _____
 E _____
 ELEVATION — M.S.L. DATUM: _____
 THETA ANGLE: _____
 FIELD BOOK: _____ PAGE _____
 DRAWN BY: S. SORENSEN

CORNER NO. 77
 SECTION 22
 TOWN 18
 RANGE 6



LOCATION
(Indicated by 'X')

BASIS FOR MONUMENT LOCATION

Show info such as: History of corner, with reference to Vol. and pg., dates, surveyor; exact description of monument replaced; if location computed, by taped or EDM traverse; landowner remarks, etc. (Use reverse side if necessary)

Set equidistant and on line between adjacent section corners. No evidence of any previous monumentation was found.

Excavated with backhoe - found nothing

SEAL:



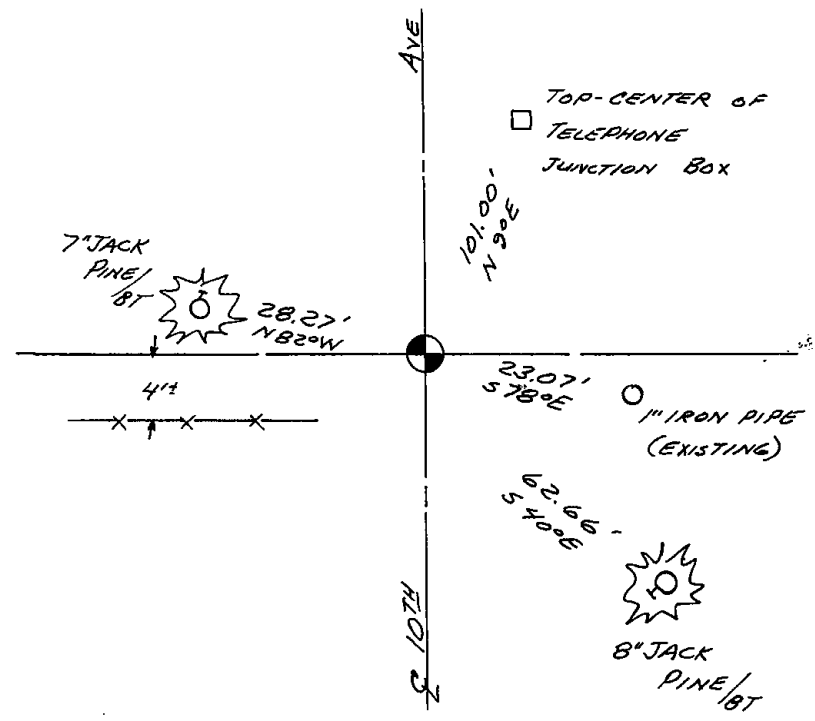
DATA SHOWN HERE ON
CERTIFIED CORRECT:

Anthony B. Kiedrowski
Registered Land Surveyor

DATE: 8-1-78

TIE SKETCH

Show at least four ties, also fence lines, roads, topo, size and type of witness trees' and if off road - best way to arrive at corner.



MAINTENANCE RECORD

Date	Init.	Remarks
11-30-78	DARN	OK