

22  
SECTION

18  
TOWN

06  
RANGE

# ADAMS COUNTY

COUNTY CORNER NO: 78

ROMPORTOL ID: 41806222000

## PUBLIC LAND SURVEY MONUMENT RECORD

TYPE OF MONUMENT: HARRISON  
ADAMS COUNTY COORDINATES, NAD 83 (2007)

N. 237466.352

E. 546691.978

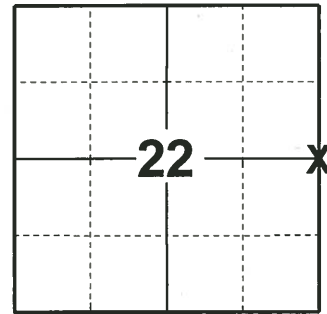
ELEVATION- - - - - DATUM - - - - -

FIELD WORK DATE: 12/17/2019

### BASIS FOR MONUMENT LOCATION

1977 - PLS 1103 RAN EDM/T2 TRAVERSE AROUND SECTION 22 AND PARTS OF SURROUNDING SECTIONS TO DETERMINE SEARCH AREA FOR INVESTIGATION. EXCAVATION WITH BACKHOE YIELDED NO EVIDENCE OF THE ORIGINAL CORNER OR ANY REMONUMENTATION. COULD FIND NO BEARING TREES. COULD FIND NO RECORD OF BEARING TREE IN NE QUADRANT AT NE CORNER OF SECTION 22. RELOCATED CORNER (E1/4) ON LINE BETWEEN SE CORNER AND INTERSECTION OF 9TH AVE & STH 21 AND HALF-WAY. SET HARRISON MONUMENT.

2019 - PLS FOUND HARRISON FLUSH WITH THE GROUND AND 2 WITNESS TREES. THE MONUMENT AGREES WITH BOTH WITNESS TREES. ACCEPTED THE HARRISON AS THE CORNER LOCATION. SET 4 NEW TIES AND MEASURED TO THE EXISTING WITNESS TREES.



LOCATION  
(INDICATE CORNER BY "X")

SEAL:



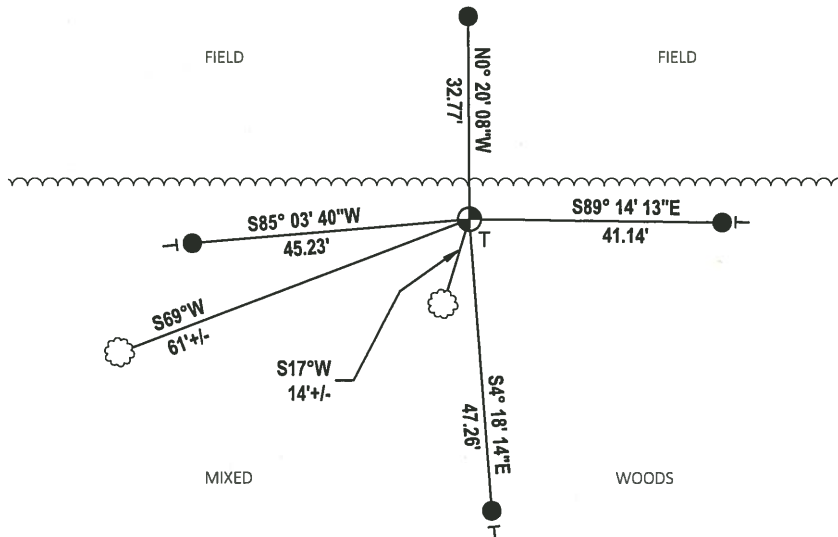
DATA SHOWN HERE ON THIS TIE SHEET IS CORRECT AND COMPLETE TO THE BEST OF MY KNOWLEDGE AND BELIEF.

PROFESSIONAL LAND SURVEYOR

DATE 1/9/2020

### - TIE SKETCH

NOTE 1: TIE SET IN FIELD IS 18" BELOW GROUND SURFACE.  
NOTE 2: THE CORNER LANDS 4'± SOUTH OF FIELD EDGE.



- SET 3/4" x 18" IRON REBAR, 1.50#/FT
- ⊕ FOUND HARRISON MONUMENT
- VINYL "T" POST
- ☁ WITNESS TREE

# Government Land Corner Certificate

ADAMS County

TYPE OF MONUMENT: HARRISON STANDARD

STATE PLANE COORDINATES: N \_\_\_\_\_  
E \_\_\_\_\_

ELEVATION — M.S.L. DATUM: \_\_\_\_\_

THETA ANGLE: \_\_\_\_\_

FIELD BOOK: 38 PAGE 45

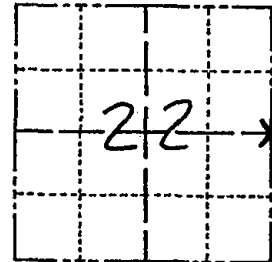
DRAWN BY: G. RHINEHART

CORNER NO. 78

SECTION 22

TOWN 18

RANGE 6



LOCATION  
(Indicated by 'X')

## BASIS FOR MONUMENT LOCATION

Show info such as: History of corner, with reference to Vol. and pg., dates, surveyor; exact description of monument replaced; if location computed, by taped or EDM traverse; landowner remarks, etc. (Use reverse side if necessary)

Ran EDM/T2 traverse around Section 22 and parts of surrounding sections to determine search area for investigation.

Excavation with backhoe yielded no evidence of the original corner or any remonumentation. Could find no bearing trees.

Could find no record of bearing tree in NE quadrant at NE corner of Section 22,

Relocated corner (E $\frac{1}{4}$ ) on line between SE corner and Intersection of 9th Ave. & S.T.H. '21', and half-way.

Set Harrison Monument of 10-12-77.

SEAL:



DATA SHOWN HERE ON  
CERTIFIED CORRECT:

*Dale C. Hagen*  
Registered Land Surveyor

DATE: 12-6-77.

## TIE SKETCH

Show at least four ties, also fence lines, roads, topo, size and type of witness trees' and if off road - best way to arrive at corner.

### NOTE

Ties in trees to nail in disc.

## MAINTENANCE RECORD

Date	Init.	Remarks
3-17-83	GR-SS	O.K.
2-23-88	GR-SS	1 NEW TIE / SIGNS ON ALL B.T.'S
7-30-92	SG-BS	O.K.
2-2-98	JG	1-NEW MON. OK
12-16-02	JG	1-GONE, 1-NEW, MON. OK
11-28-07	JG	OK

