

23
SECTION

18
TOWN

06
RANGE

ADAMS COUNTY

COUNTY CORNER NO.: 79

ROMPORTOL ID: 41806232000

PUBLIC LAND SURVEY MONUMENT RECORD

TYPE OF MONUMENT: HARRISON
ADAMS COUNTY COORDINATES, NAD 83 (2007)

N. 237549.054

E. 551969.760

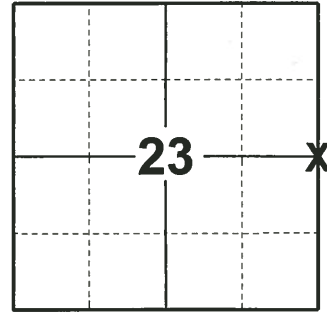
ELEVATION- - - - - DATUM - - - - -

FIELD WORK DATE: 12/12/2019

BASIS FOR MONUMENT LOCATION

1979 - PLS 1478 SET HARRISON MONUMENT EQUIDISTANT AND ON LINE BETWEEN ADJACENT SECTION CORNERS. NO EVIDENCE OF ANY PREVIOUS MONUMENTATION WAS FOUND.

2019 - PLS 2675 FOUND HARRISON 2" BELOW THE TRAIL AND 4 WITNESSES. THE MONUMENT AGREES WITH ALL 4 WITNESSES. ACCEPTED THE HARRISON AS THE CORNER LOCATION. SET 4 NEW TIES AND MEASURED TO THE EXISTING WITNESSES.



LOCATION

(INDICATE CORNER BY "X")

SEAL:

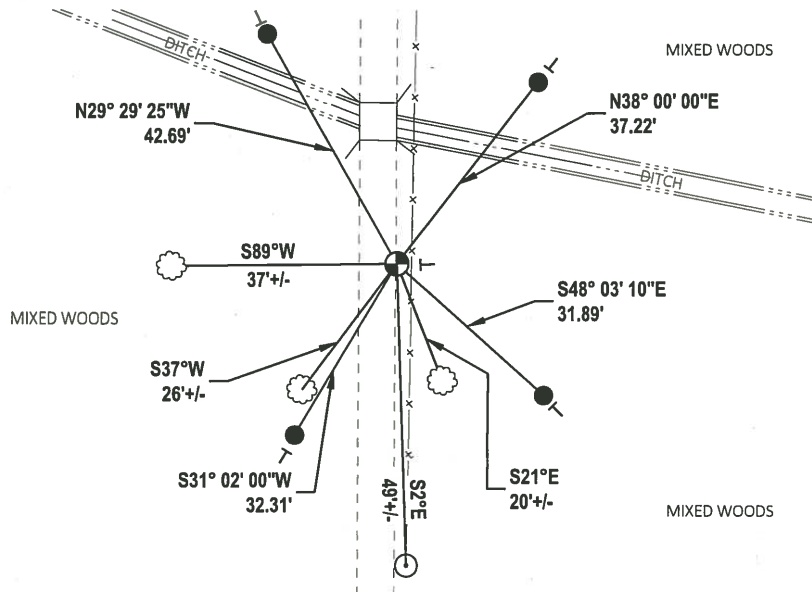


DATA SHOWN HERE ON THIS TIE SHEET IS CORRECT AND COMPLETE TO THE BEST OF MY KNOWLEDGE AND BELIEF.

PROFESSIONAL LAND SURVEYOR

DATE 1/9/2020

- TIE SKETCH



- SET 3/4" x 18" IRON REBAR, 1.50#/FT
- ⊕ FOUND HARRISON MONUMENT
- ┌ VINYL "T" POST
- ☼ WITNESS TREE
- WOOD POST

Government Land Corner Certificate

ADAMS County

TYPE OF MONUMENT: **HARRISON**

STATE PLANE COORDINATES: N _____
E _____

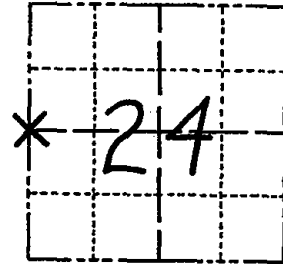
ELEVATION — M.S.L. DATUM: _____

THETA ANGLE: _____

FIELD BOOK: **54** PAGE **57**

DRAWN BY: **SULLIVAN**

CORNER NO. **79**
SECTION **24**
TOWN **18**
RANGE **6**



LOCATION
(Indicated by 'X')

BASIS FOR MONUMENT LOCATION

Show info such as: History of corner, with reference to Vol. and pg., dates, surveyor; exact description of monument replaced; if location computed, by taped or EDM traverse; landowner remarks, etc. (Use reverse side if necessary)

Set equidistant and on line between adjacent section corners. No evidence of any previous monumentation was found.

SEAL:



DATA SHOWN HERE ON
CERTIFIED CORRECT:

Gregory P. Rhinehart
Registered Land Surveyor

DATE: **7/10/79**

TIE SKETCH

Show at least four ties, also fence lines, roads, topo, size and type of witness trees and if off road - best way to arrive at corner.

