

24 SECTION    18 TOWN    05 RANGE

# ADAMS COUNTY

COUNTY CORNER NO: 80

ROMPORTOL ID: 41805242000

## PUBLIC LAND SURVEY MONUMENT RECORD

TYPE OF MONUMENT: HARRISON  
ADAMS COUNTY COORDINATES, NAD 83 (2007)

N. 237341.365

E. 525736.025

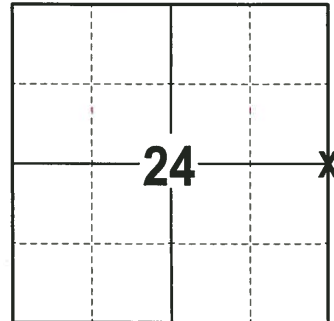
ELEVATION-      DATUM     

FIELD WORK DATE: 12/21/2017

### BASIS FOR MONUMENT LOCATION

1978 - PLS 1478 CALCULATED POSITION PROPORTIONATE AND ON A LINE BETWEEN ADJACENT CORNERS ON THE RANGE LINE. EXCAVATED WITH A BACKHOE BY A.B. KIEDROWSKI AND YIELDED NO EVIDENCE OF ANY PREVIOUS MONUMENTATION. SET A HARRISON MONUMENT AT THE CORNER LOCATION AND TIED OUT.

2017 - PLS 2994 FOUND A HARRISON MONUMENT 12" BELOW THE ROAD SURFACE. FOUND NO EVIDENCE OF ANY TIES OR WITNESSES. ACCEPTED THE HARRISON MONUMENT AS THE BEST EVIDENCE OF THE CORNER LOCATION. SET 4 NEW TIES AND MEASURED TO THE TIES.



**LOCATION**  
(INDICATE CORNER BY "X")

SEAL:



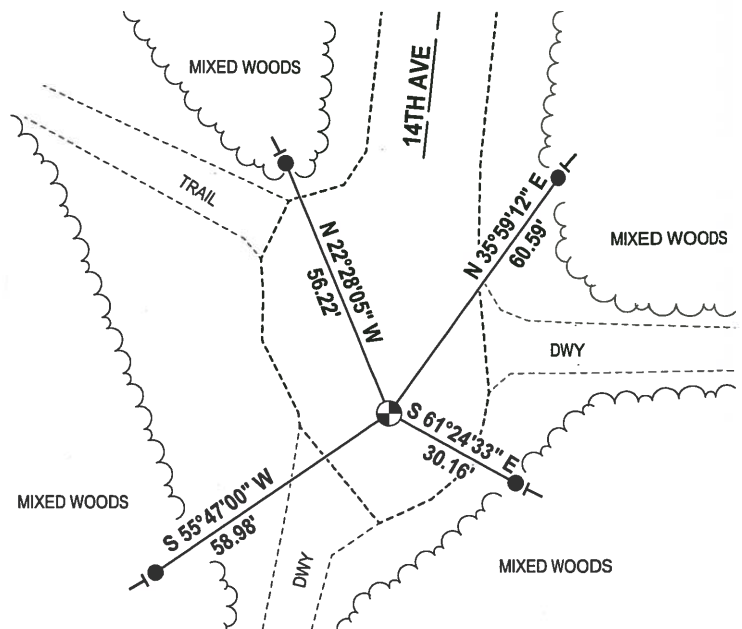
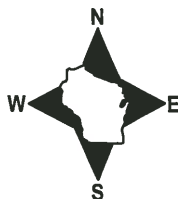
DATA SHOWN HERE ON THIS TIE SHEET IS CORRECT AND COMPLETE TO THE BEST OF MY KNOWLEDGE AND BELIEF.

PROFESSIONAL LAND SURVEYOR

DATE 1-4-18

### - TIE SKETCH

NOTE: THE CORNER FALLS 1½ WEST OF THE CENTERLINE OF 14TH AVE.



- 3/4" x 18" IRON REBAR SET, 1.50#/FT
- ⊕ HARRISON FOUND
- VINYL "T" POST