

19  
SECTION

18  
TOWN

06  
RANGE

# ADAMS COUNTY

COUNTY CORNER NO: 82

ROMPORTOL ID: 41806190020

## PUBLIC LAND SURVEY MONUMENT RECORD

TYPE OF MONUMENT: HARRISON

ADAMS COUNTY COORDINATES, NAD 83 (2007)

N. 234710.771

E. 528297.849

ELEVATION- - - - DATUM - - - -

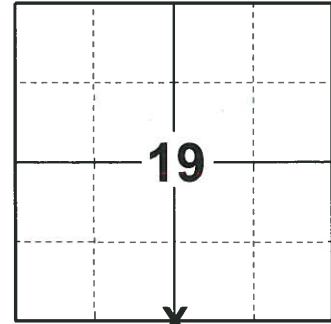
FIELD WORK DATE: 06/13/2019

### BASIS FOR MONUMENT LOCATION

1971 - PLS 981 FOUND NAIL AND REPLACED WITH HARRISON MONUMENT.

2013 - PLS 1478 REDREW TIE SHEET.

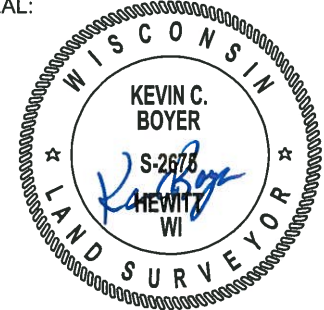
2019 - PLS 2675 FOUND A HARRISON MONUMENT 2" BELOW THE ROAD SURFACE, 3 TIES AND 2 WITNESSES. THE MONUMENT AGREES WITH THE EXISTING TIES AND WITNESSES. ACCEPTED THE HARRISON MONUMENT AS THE CORNER LOCATION. SET 1 NEW TIE AND MEASURED TO THE TIES AND WITNESSES.



**LOCATION**

(INDICATE CORNER BY "X")

SEAL:



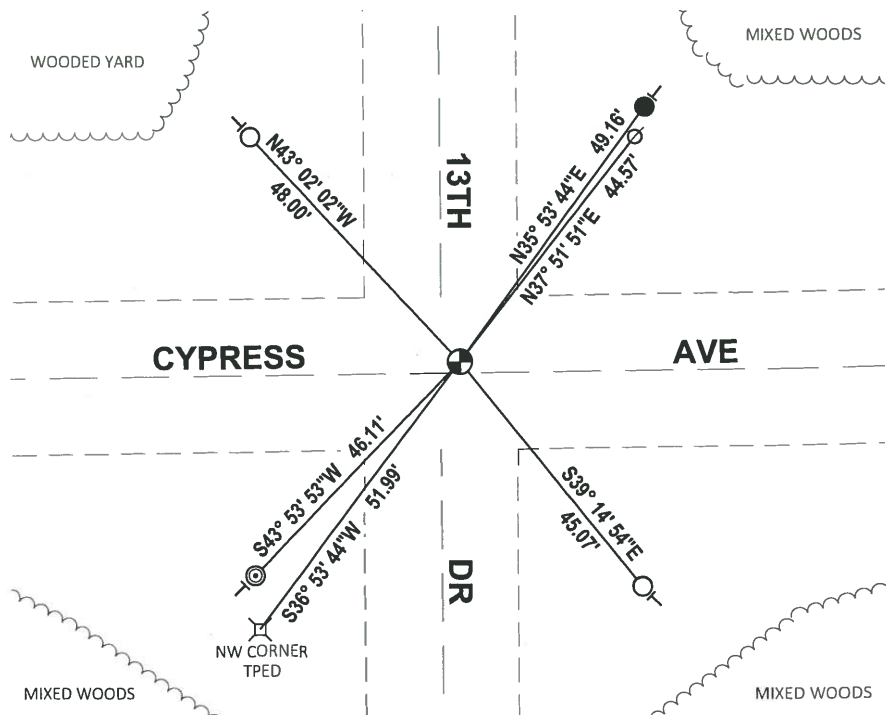
DATA SHOWN HERE ON THIS TIE SHEET IS CORRECT AND COMPLETE TO THE BEST OF MY KNOWLEDGE AND BELIEF.

PROFESSIONAL LAND SURVEYOR

DATE 8/2/19

### TIE SKETCH

NOTE: THE CORNER FALLS 2± NORTH OF THE CENTERLINE OF CYPRESS AVE AND 3± EAST OF THE CENTERLINE OF 13TH DR.



- SET 3/4" x 18" IRON REBAR, 1.50#/FT
- FOUND 3/4" IRON ROD
- ◎ FOUND 2" O.D. IRON PIPE
- ⊙ FOUND HARRISON MONUMENT
- ⊘ WITNESS POWER POLE
- ┆ VINYL "T" POST

# ADAMS COUNTY

## Survey Monument Record

TYPE OF MONUMENT: 30" HARRISON

STATE PLANE COORDINATES: N \_\_\_\_\_

E \_\_\_\_\_

ELEVATION — M.S.L. DATUM: \_\_\_\_\_

THETA ANGLE: \_\_\_\_\_

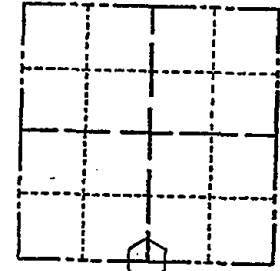
FIELD BOOK: 104 PAGE 47

CORNER NO. 15

SECTION 19

TOWN 18

RANGE 6



LOCATION  
(Indicated by 'X')

SEAL:

### BASIS FOR MONUMENT LOCATION

(Use reverse side if necessary)

Show info such as: History of corner, with reference to Vol. and pg, dates, surveyor; exact description of monument replaced; if location computed, by taped or EDM traverse; landowner remarks, etc.

Found nail and set monument

July 9, 1971

Sam T. Millen R.L.S. S-981

- OK 7-18-78 PK-SS
- " 3-4-83 SS
- 1-GONE, 1-NEW, MON. OK - 7-28-92 JG-BS
- 2-GONE 2-3-98-JG
- 2 NEW TIES 12-10-02 JG-SS
- OK 11-21-07 CS-SS

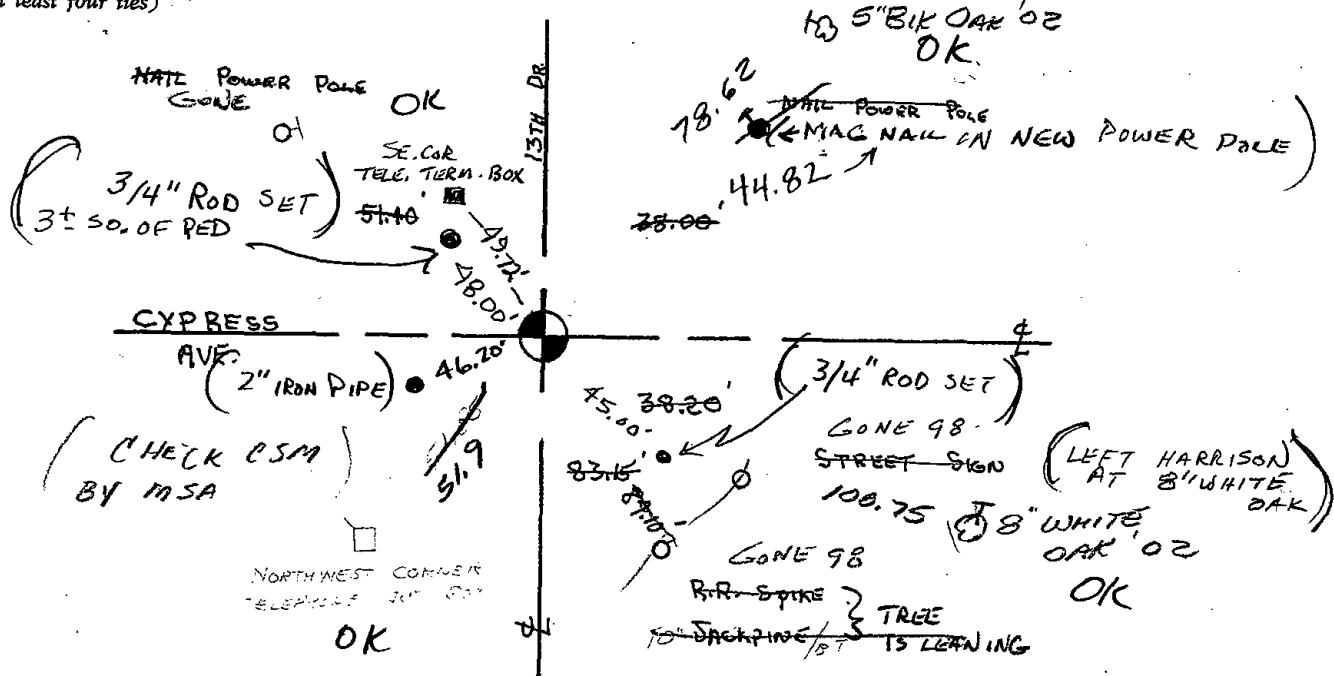
CERTIFIED CORRECT:

Registered Land Surveyor

DATE: \_\_\_\_\_

### TIE SKETCH REMOVED HARRISON FOR ROAD CONSTR. 5-13-04 - JG-DA RESET HARRISON 4-7-05

(Show at least four ties)



ADAMS COUNTY

Survey Monument Record

CORNER NO. 15

SECTION 19

TOWN 18

RANGE 6

TYPE OF MONUMENT: 30" HARRISON

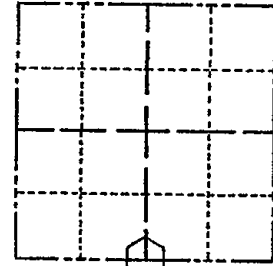
STATE PLANE COORDINATES: N

E

ELEVATION - M.S.L. DATUM:

THETA ANGLE:

FIELD BOOK: 104 PAGE 47



LOCATION (Indicated by 'X')

SEAL:

BASIS FOR MONUMENT LOCATION

(Use reverse side if necessary)

Show info such as: History of corner, with reference to Vol. and pg, dates, surveyor; exact description of monument replaced; if location computed, by taped or EDM traverse; landowner remarks, etc.

Found nail and set monument

July 9, 1971

Sam T. Mullen R.L.S. S-981

OK 7-10-78 PK-SS
" 3-4-83 SS
1-GONE, 1-NEW, MON. OK - 7-28-92 JG-BS
2-GONE, 2-3-98-JG
2 NEW TIES 12-10-02 JG-SS

CERTIFIED CORRECT:

Registered Land Surveyor

DATE:

TIE SKETCH

(Show at least four ties)

