

## PUBLIC LAND SURVEY MONUMENT RECORD

TYPE OF MONUMENT: HARRISON  
 ADAMS COUNTY COORDINATES, NAD 83 (2007)

N. 234727.905

E. 530925.351

ELEVATION- \_\_\_\_\_ DATUM \_\_\_\_\_

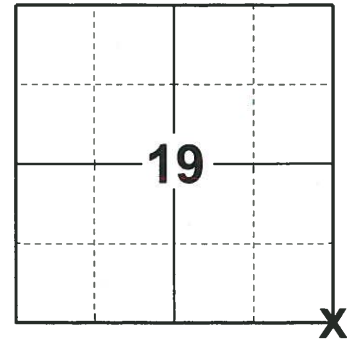
FIELD WORK DATE: 06/13/2019

### BASIS FOR MONUMENT LOCATION

1971 - PLS 981 FOUND NAIL AND REPLACED WITH A HARRISON MONUMENT.

1988 - PLS 1321 FOUND HARRISON MONUMENT AND SET NEW TIES.

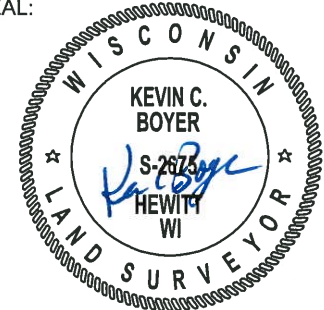
2019 - PLS 2675 FOUND A HARRISON MONUMENT FLUSH WITH THE ROAD SURFACE AND 2 TIES. THE MONUMENT AGREES WITH THE EXISTING TIES. ACCEPTED THE HARRISON MONUMENT AS THE CORNER LOCATION. SET 3 NEW TIES AND MEASURED TO THE TIES.



**LOCATION**

(INDICATE CORNER BY "X")

SEAL:



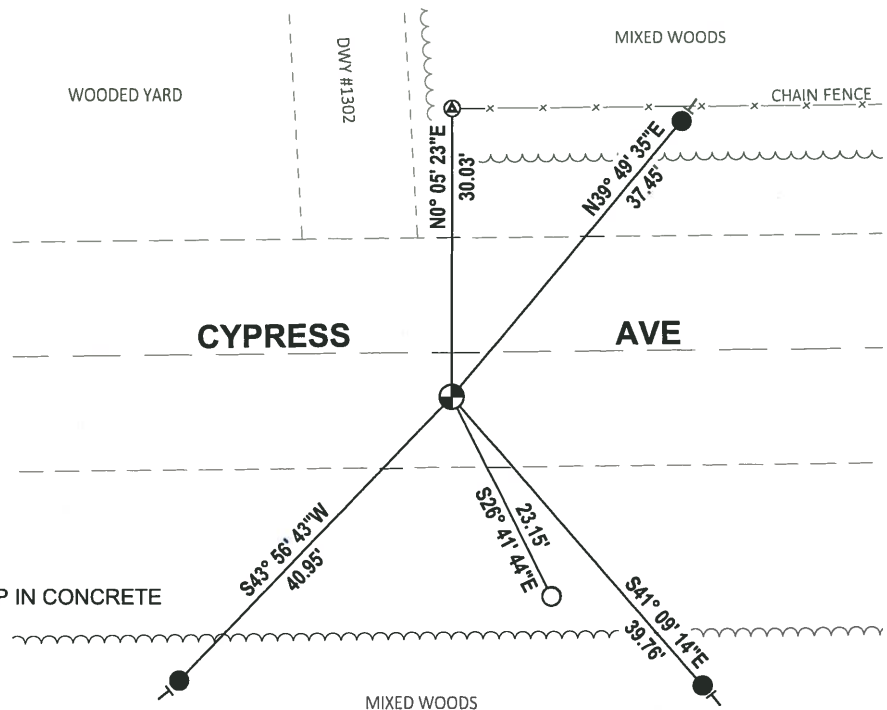
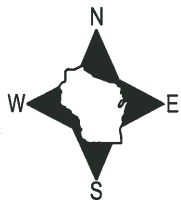
DATA SHOWN HERE ON THIS TIE SHEET IS CORRECT AND COMPLETE TO THE BEST OF MY KNOWLEDGE AND BELIEF.

PROFESSIONAL LAND SURVEYOR

DATE 8/2/19

### TIE SKETCH

NOTE: THE CORNER FALLS 5± SOUTH OF THE CENTERLINE OF CYPRESS AVE.



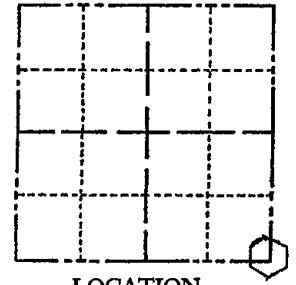
- SET 3/4" x 18" IRON REBAR, 1.50#/FT
- FOUND 3/4" IRON ROD
- ⊕ FOUND ADAMS COUNTY ALUMINUM CAP IN CONCRETE
- ⊙ FOUND HARRISON MONUMENT
- VINYL "T" POST

# ADAMS COUNTY

## Survey Monument Record

CORNER NO. 14  
 SECTION 19  
 TOWN 18  
 RANGE 6

TYPE OF MONUMENT: 30" HARRISON  
 STATE PLANE COORDINATES: N. \_\_\_\_\_  
 E. \_\_\_\_\_  
 ELEVATION — M.S.L. DATUM: \_\_\_\_\_  
 THETA ANGLE: \_\_\_\_\_  
 FIELD BOOK: 104 PAGE 46



LOCATION  
(Indicated by 'X')

SEAL:

### BASIS FOR MONUMENT LOCATION

(Use reverse side if necessary)

Show info such as: History of corner, with reference to Vol. and pg, dates, surveyor; exact description of monument replaced; if location computed, by taped or EDM traverse; landowner remarks, etc.

Found nail and set monument

July 9, 1971

Sam T. Mullen R.L.S. S-981

OK 7-18-78 DK-SS  
 3-4-83 SS 2 NEW TIES  
 1-GONE, 1-NEW MON OK, 7-28-92 JG-BS  
 1-GONE, 4-TIES LEFT, MON. OK 2-3-98 - JG  
 OK 12-10-02 SS  
 OK 11-15-07 JG-SS

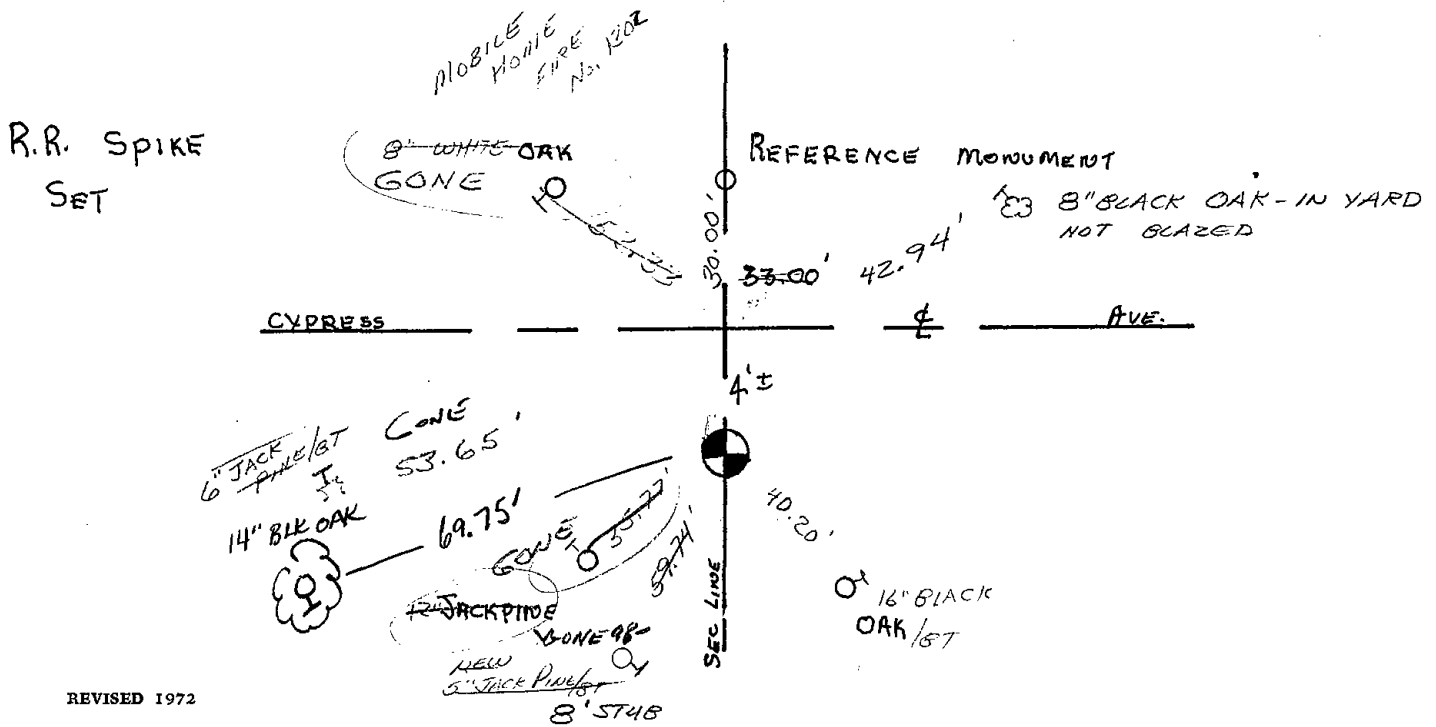
CERTIFIED CORRECT:

Registered Land Surveyor

DATE: \_\_\_\_\_

### TIE SKETCH

(Show at least four ties)



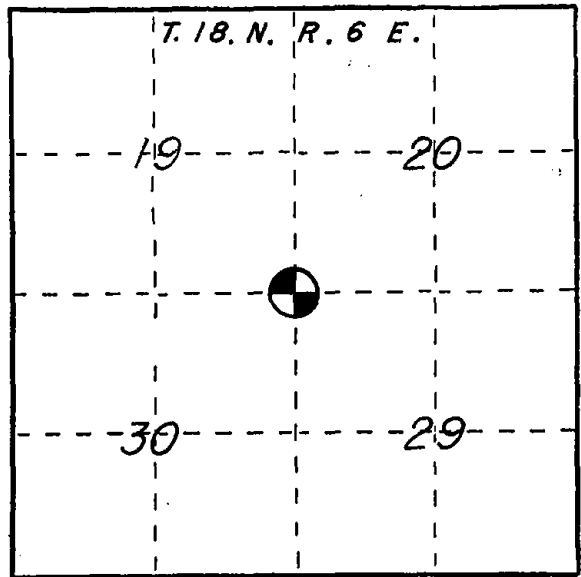
# U. S. PUBLIC LAND SURVEY MONUMENT RECORD

## ADAMS COUNTY

**INSTRUCTIONS:** This record shall show the location of the corner and shall include all of the following nine elements (a through i).

- (a) Identify the corner by reference to the U.S. public land survey system.  
 O = Corner monument restored.

NW CORNER  
 SECTION 29  
 T18N R6E  
 TOWN OF PRESTON  
 ADAMS Co., WI

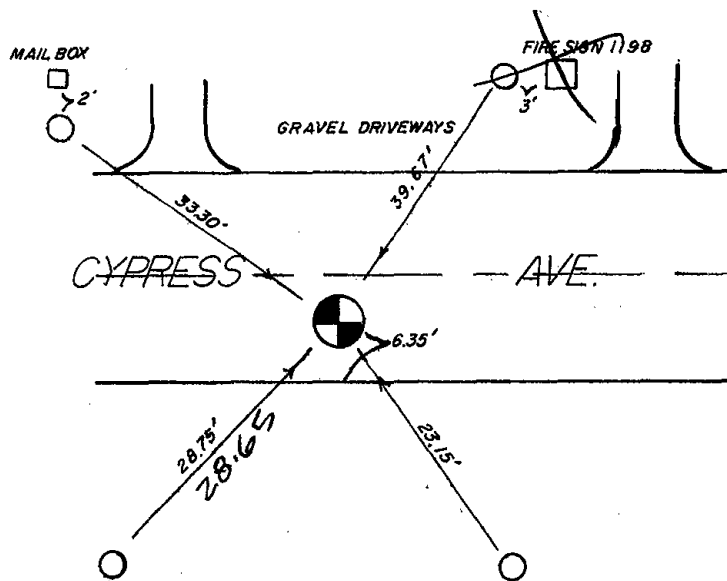
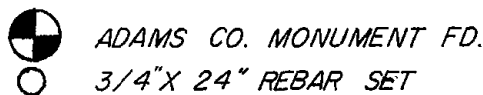


- (b) Describe any record evidence, monument evidence, occupational evidence, testimonial evidence or any other material evidence you considered, and whether the monument was found or placed.

FOUND HARRISON MON. AND SET  
 NEW TIES AS SHOWN BELOW.

- (c) In the plan view drawing below, provide reference ties to at least 4 witness monuments, or, if the location is within a municipality, to at least 2 witness monuments. (Witness monuments shall be made of concrete, natural stone, iron or other equally durable material.) Describe witness monuments.

- (d) Show a plan view drawing depicting the relevant monuments and reference ties which is sufficient in detail to enable accurate relocation of the corner monument if the corner monument is disturbed. Indicate north.



(e) Describe any material discrepancy between the location of the corner as restored or reestablished and the location of that corner as previously restored or reestablished by distance and direction. Show the discrepancy on the plan view drawing under (d), above. Show the distances between the corner as previously restored or reestablished and (1) the corner as restored or reestablished, and (2) to at least 2 of the witness monuments shown on the drawing in (d), above.

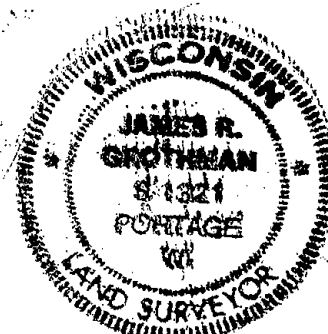
NONE

(f) Was the corner restored through acceptance of (1) an obliterated evidence location, or, (2) a found perpetuated location?

(g&h) Was the corner reestablished through lost corner proportionate methods? If so, show the method, including the directions and distances to other public land survey corners used as evidence or used for proportioning in determining the corner location?

NO

Affix Land Surveyor Seal



(1) I, JAMES R. GROTHMAN  
(type or print name) certify that the corner location shown on this record was determined by me or under my direction and control and that this U.S. Public Land Survey Monument Record is correct and complete to the best of my knowledge and belief.

Signature

Date

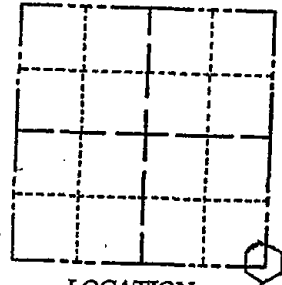
James R. Grothman 9/15/88

ADAMS COUNTY

Survey Monument Record

TYPE OF MONUMENT: 30" HARRISON  
 STATE PLANE COORDINATES: N \_\_\_\_\_  
 E \_\_\_\_\_  
 ELEVATION — M.S.L. DATUM: \_\_\_\_\_  
 THETA ANGLE: \_\_\_\_\_  
 FIELD BOOK: 104 PAGE 46

CORNER NO. 14  
 SECTION 19  
 TOWN 18  
 RANGE 6



LOCATION  
(Indicated by 'X')

SEAL:

BASIS FOR MONUMENT LOCATION

(Use reverse side if necessary)

Show info such as: History of corner, with reference to Vol. and pg. dates, surveyor; exact description of monument replaced; if location computed, by taped or EDM traverse; landowner remarks, etc.

Found nail and set monument

July 9, 1971

Sam T. Mullen R.L.S. S-981

OK 7-18-76 PK-SS  
 3-4-83 SS 2 NEW TIES  
 1-GONE, 1-NEW MON OK, 7-28-92 JG-BS  
 1-GONE, 4-TIES LEFT, MON. OK 2-3-98 - JG  
 OK 12-10-02 SS

CERTIFIED CORRECT:

Registered Land Surveyor

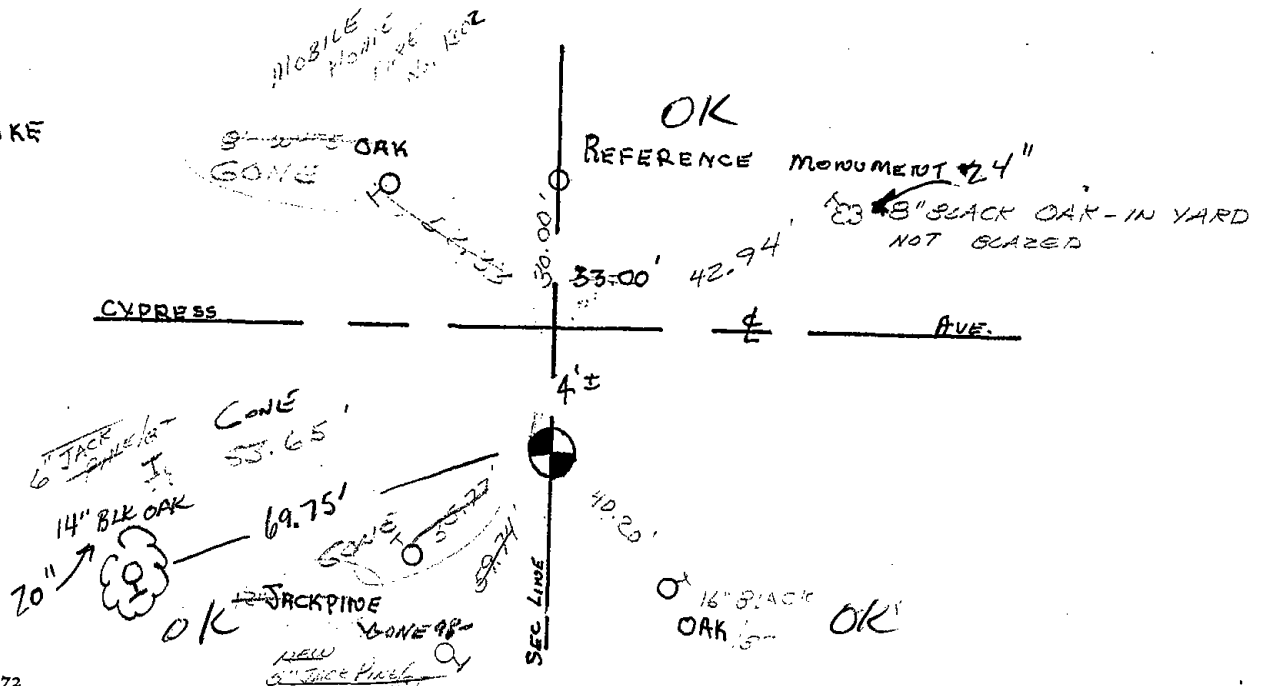
DATE: \_\_\_\_\_

TIE SKETCH

(Show at least four ties)

\* REMOVED HARRISON FOR ROAD CONSTR. 5-13-04 JG-DA  
 RESET 4-7-05

R.R. SPIKE  
SET



# U. S. PUBLIC LAND SURVEY MONUMENT RECORD

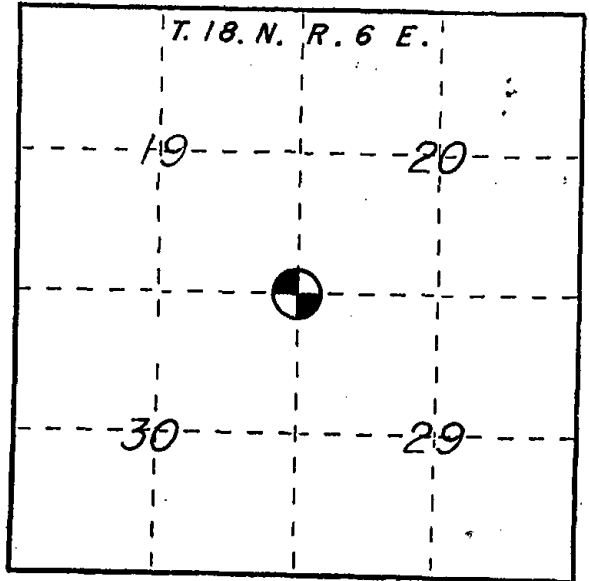
## ADAMS COUNTY

**INSTRUCTIONS:** This record shall show the location of the corner and shall include all of the following nine elements (a through i).

(a) Identify the corner by reference to the U.S. public land survey system.

○ = Corner monument restored.

NW CORNER  
SECTION 29  
T18N R6E  
TOWN OF PRESTON  
ADAMS Co., WI



(b) Describe any record evidence, monument evidence, occupational evidence, testimonial evidence or any other material evidence you considered, and whether the monument was found or placed.

FOUND HARRISON Mon. AND SET NEW TIES AS SHOWN BELOW.

(c) In the plan view drawing below, provide reference ties to at least 4 witness monuments, or, if the location is within a municipality, to at least 2 witness monuments. (Witness monuments shall be made of concrete, natural stone, iron or other equally durable material.) Describe witness monuments.

(d) Show a plan view drawing depicting the relevant monuments and reference ties which is sufficient in detail to enable accurate relocation of the corner monument if the corner monument is disturbed. Indicate north.



ADAMS CO. MONUMENT FD.



3/4" X 24" REBAR SET

