

21
SECTION

18
TOWN

06
RANGE

ADAMS COUNTY

COUNTY CORNER NO: 87

ROMPORTOL ID: 41806210000

PUBLIC LAND SURVEY MONUMENT RECORD

TYPE OF MONUMENT: HARRISON
ADAMS COUNTY COORDINATES, NAD 83 (2007)

N. 234866.828

E. 541451.172

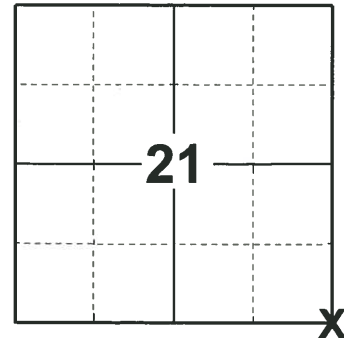
ELEVATION- - - - DATUM - - - -

FIELD WORK DATE: 06/12/2019

BASIS FOR MONUMENT LOCATION

1974 - PLS 1103 A KIEDROWSKI EXCAVATED WITH BACKHOE AND FOUND POINTED WOODEN STAKE. TIED THIS POINT INTO EDM/TRANSIT TRAVERSE, THIS POINT MATCHED EXISTING EVIDENCE. ACCEPTED AS CORRECT AND MONUMENTED WITH A HARRISON MONUMENT.

2019 - PLS 2675 FOUND A HARRISON MONUMENT 4" BELOW THE ROAD SURFACE AND 2 WITNESSES. THE MONUMENT AGREES WITH THE EXISTING WITNESSES. ACCEPTED THE HARRISON MONUMENT AS THE CORNER LOCATION. SET 4 NEW TIES AND MEASURED TO THE TIES AND WITNESSES.



LOCATION

(INDICATE CORNER BY "X")

SEAL:



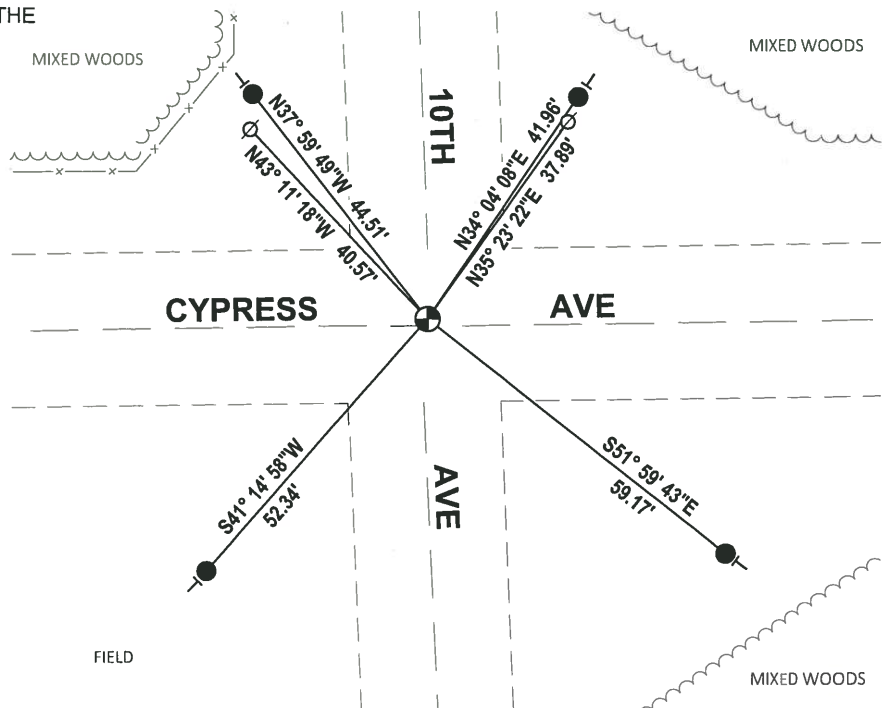
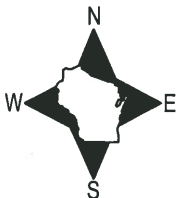
DATA SHOWN HERE ON THIS TIE SHEET IS CORRECT AND COMPLETE TO THE BEST OF MY KNOWLEDGE AND BELIEF.

PROFESSIONAL LAND SURVEYOR

DATE 8/2/19

TIE SKETCH

NOTE: THE CORNER FALLS 1½ NORTH OF THE CENTERLINE OF CYPRESS AVE AND 0.5± EAST OF THE CENTERLINE OF 10TH AVE.



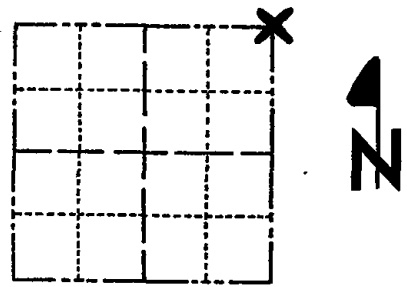
- SET 3/4" x 18" IRON REBAR, 1.50#/FT
- ⊕ FOUND HARRISON MONUMENT
- WITNESS POWER POLE
- VINYL "T" POST

ADAMS COUNTY

Survey Monument Record

TYPE OF MONUMENT: 30" Harrison Standard
 STATE PLANE COORDINATES: N _____
 E _____
 ELEVATION — M.S.L. DATUM: _____
 THETA ANGLE: _____
 FIELD BOOK: _____ PAGE _____

CORNER NO. 559
 SECTION 28
 TOWN 18
 RANGE 6



LOCATION
(Indicated by 'X')

SEAL:



BASIS FOR MONUMENT LOCATION

(Use reverse side if necessary)

Show info such as: History of corner, with reference to Vol. and pg, dates, surveyor; exact description of monument replaced; if location computed, by taped or EDM traverse; landowner remarks, etc.

Anthony B. Kiedrowski excavated with backhoe and found pointed wooden stake. Tied this point into EDM/transit traverse, this point matched existing evidence. Accepted as correct and monumented same.

OK 7-18-78 PK-SS
 " 3-2-83 SS
 3 NEW TIES 3-10-88 GR-SS
 1-GONE, 1-NEW, MON OK - 7-28-92 JG-BS
 1-GONE, 1-NEW, MON OK - 1-22-98 JG
 OK, 12-13-02 - JG
 OK 11-21-07 CS

CERTIFIED CORRECT:

Dale C. Hagen
 Registered Land Surveyor
 DATE: 10-28-74

TIE SKETCH

(Show at least four ties)

