

## PUBLIC LAND SURVEY MONUMENT RECORD

TYPE OF MONUMENT: HARRISON  
 ADAMS COUNTY COORDINATES, NAD 83 (2007)

N. 234853.726

E. 544084.922

ELEVATION- \_\_\_\_\_ DATUM \_\_\_\_\_

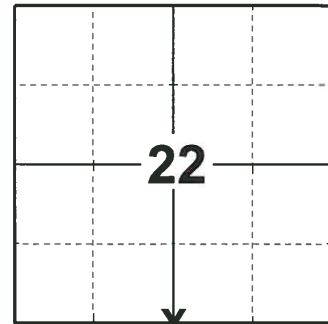
FIELD WORK DATE: 06/12/2019

### BASIS FOR MONUMENT LOCATION

1977 - PLS 1103 RAN EDM/T2 TRAVERSE AROUND SECTION 22 AND ADJOINING SECTIONS TO DETERMINE SEARCH AREA FOR INVESTIGATION. EXCAVATION WITH BACKHOE YIELDED NO CONCLUSIVE EVIDENCE AS TO THE LOCATION OF THIS CORNER. RELOCATED CORNER BY SINGLE PROPORTIONATE MEASURE ON LINE BETWEEN ADJACENT SECTION CORNERS. SET HARRISON MONUMENT.

2013 - PLS 1478 REDREW TIE SHEET.

2019 - PLS 2675 FOUND A HARRISON MONUMENT FLUSH WITH THE GROUND SURFACE AND 1 WITNESS. THE MONUMENT AGREES WITH THE EXISTING WITNESS. ACCEPTED THE HARRISON MONUMENT AS THE CORNER LOCATION. SET 4 NEW TIES AND MEASURED TO THE TIES AND WITNESS.



**LOCATION**

(INDICATE CORNER BY "X")

SEAL:



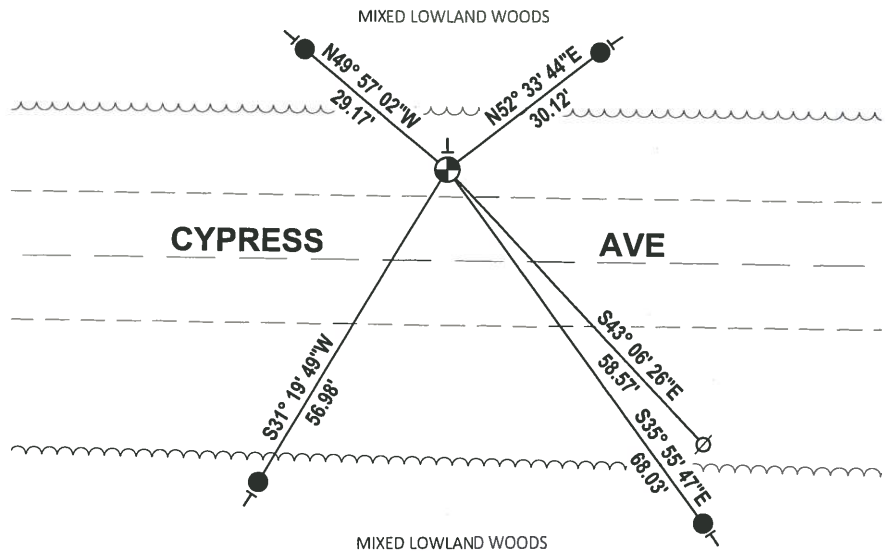
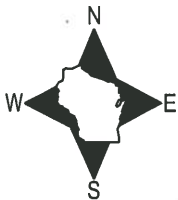
DATA SHOWN HERE ON THIS TIE SHEET IS CORRECT AND COMPLETE TO THE BEST OF MY KNOWLEDGE AND BELIEF.

PROFESSIONAL LAND SURVEYOR

DATE 8/2/19

### TIE SKETCH

NOTE: THE CORNER FALLS 14'± NORTH OF THE CENTERLINE OF CYPRESS AVE.

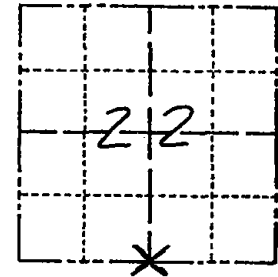


- SET 3/4" x 18" IRON REBAR, 1.50#/FT
- ⊕ FOUND HARRISON MONUMENT
- ⊘ WITNESS POWER POLE
- ⊣ VINYL "T" POST

# Government Land Corner Certificate

Adams County  
 TYPE OF MONUMENT: HARRISON STANDARD  
 STATE PLANE COORDINATES: N \_\_\_\_\_  
 E \_\_\_\_\_  
 ELEVATION — M.S.L. DATUM: \_\_\_\_\_  
 THETA ANGLE: \_\_\_\_\_  
 FIELD BOOK: 38 PAGE 45  
 DRAWN BY: G RHINEHART

CORNER NO. 88  
 SECTION 22  
 TOWN 18  
 RANGE 6



LOCATION  
(Indicated by 'X')

## BASIS FOR MONUMENT LOCATION

Show info such as: History of corner, with reference to Vol. and pg., dates, surveyor; exact description of monument replaced; if location computed, by taped or EDM traverse; landowner remarks, etc. (Use reverse side if necessary)

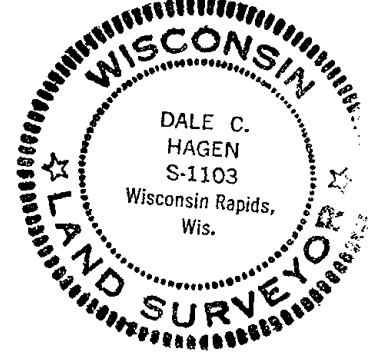
Ran EDM/T2 traverse around Section 22 and adjoining sections to determine search area for investigation.

Excavation with backhoe yielded no conclusive evidence as to the location of this corner. Could find no evidence of any bearing trees.

Relocated corner by single proportionate measure on line between adjacent section corners.

Set Harrison Monument on 10-12-77.

SEAL:



DATA SHOWN HERE ON  
CERTIFIED CORRECT:

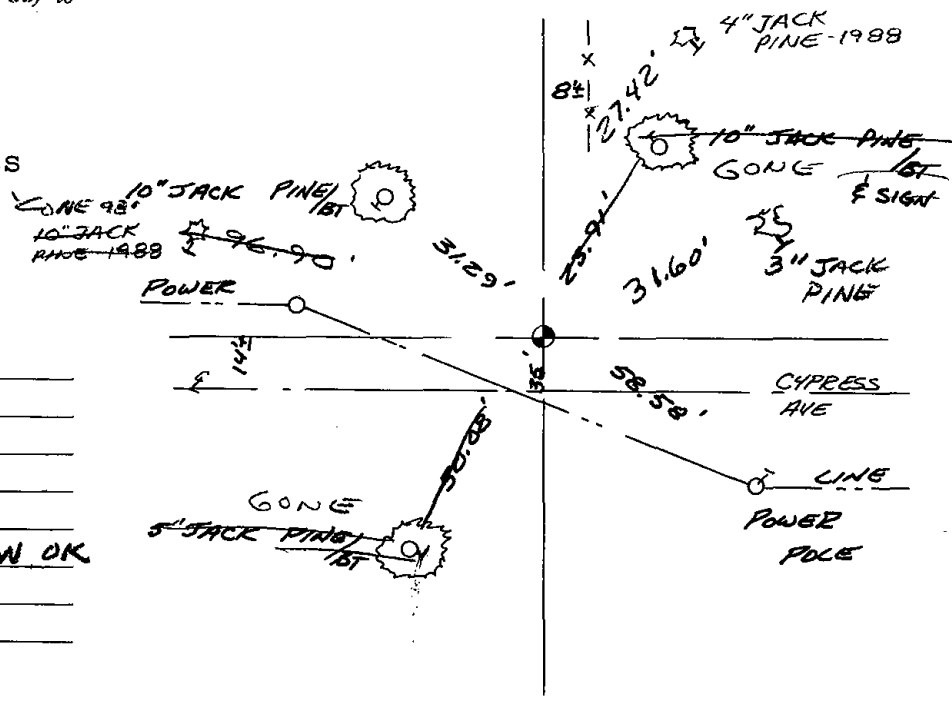
*Dale C. Hagen*  
Registered Land Surveyor  
DATE: 12-6-77

## TIE SKETCH

Show at least four ties, also fence lines, roads, topo, size and type of witness trees' and if off road - best way to arrive at corner.

### NOTES:

- 1) Ties in trees to nail in disc.
- 2) Power line angles across road 35'± South of corner.



## MAINTENANCE RECORD

Date	Init.	Remarks
3-2-83	GR-SS	OK
3-10-88	" "	2 NEW TIES
7-28-92	JG-85	O.K.
1-22-98	JG	1-GONE, 1-NEW, MON OK
12-13-02	JG	OK
11-21-07	CS	OK