

22
SECTION

18
TOWN

06
RANGE

ADAMS COUNTY

COUNTY CORNER NO: 89

ROMPORTOL ID: 4180622000

PUBLIC LAND SURVEY MONUMENT RECORD

TYPE OF MONUMENT: HARRISON
ADAMS COUNTY COORDINATES, NAD 83 (2007)

N. 234840.758

E. 546727.198

ELEVATION- _____ DATUM _____

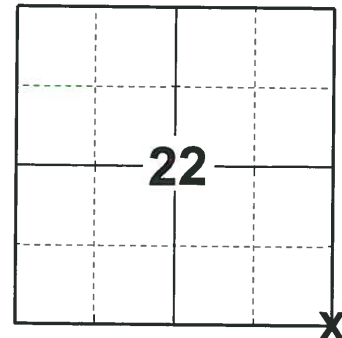
FIELD WORK DATE: 06/11/2019

BASIS FOR MONUMENT LOCATION

1976 - PLS 1103 RAN EDM/TRANSIT TRAVERSE AROUND SECTION 25, AND PARTS OF 26 AND 27 TO DETERMINE SEARCH AREAS FOR INVESTIGATION. EXCAVATION YIELDED NO EVIDENCE OF THE ORIGINAL CORNER, BUT A 1-1/2" PINCHED IRON PIPE WAS FOUND, ACCEPTED AND REMONUMENTED WITH A HARRISON.

2013 - PLS 1478 REDREW TIE SHEET.

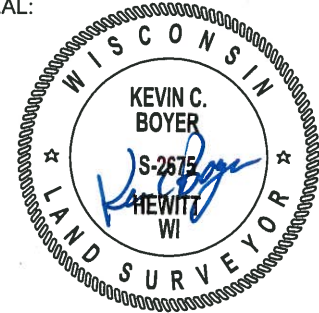
2019 - PLS 2675 FOUND A HARRISON MONUMENT FLUSH WITH THE ROAD SURFACE AND 3 WITNESSES. THE MONUMENT AGREES WITH THE EXISTING WITNESSES. ACCEPTED THE HARRISON MONUMENT AS THE CORNER LOCATION. SET 4 NEW TIES AND MEASURED TO THE TIES AND WITNESSES.



LOCATION

(INDICATE CORNER BY "X")

SEAL:



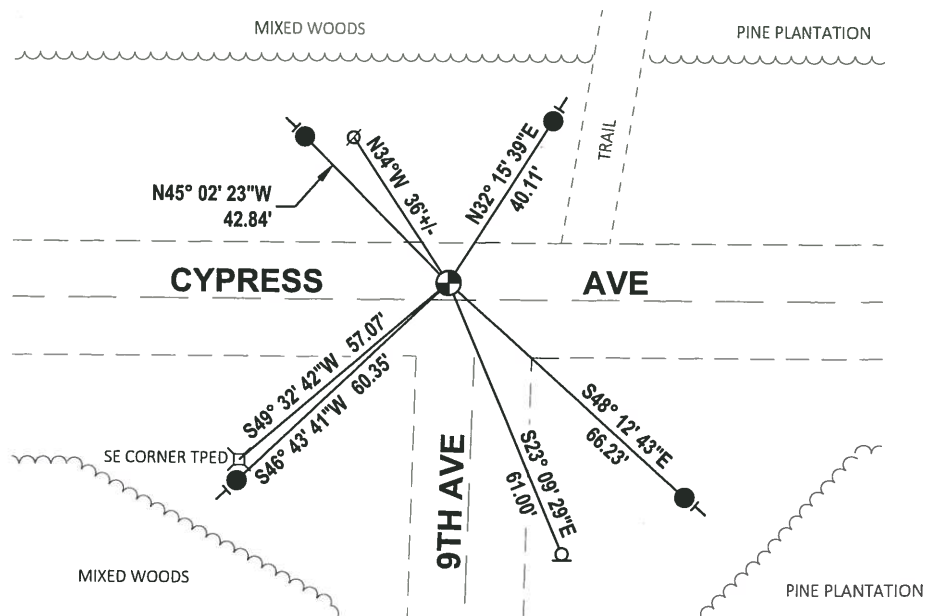
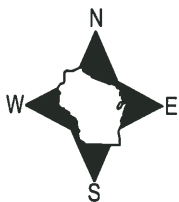
DATA SHOWN HERE ON THIS TIE SHEET IS CORRECT AND COMPLETE TO THE BEST OF MY KNOWLEDGE AND BELIEF.

PROFESSIONAL LAND SURVEYOR

DATE 8/2/19

TIE SKETCH

NOTE: THE CORNER FALLS 4'± NORTH OF THE CENTERLINE OF CYPRESS AVE AND 6'± WEST OF THE EXTENDED CENTERLINE OF 9TH AVE.



- SET 3/4" x 18" IRON REBAR, 1.50#/FT
- ⊕ FOUND HARRISON MONUMENT
- ⊙ WITNESS POWER POLE
- ⊓ WITNESS STOP SIGN
- ┌ VINYL "T" POST

ADAMS COUNTY

Survey Monument Record

TYPE OF MONUMENT: Standard Harrison

STATE PLANE COORDINATES: N _____

E _____

ELEVATION — M.S.L. DATUM: _____

THETA ANGLE: _____

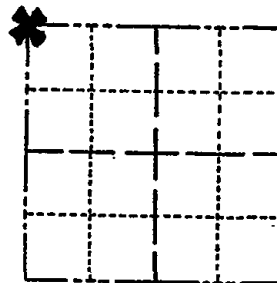
FIELD BOOK: _____ PAGE _____

CORNER NO. 943

SECTION 26

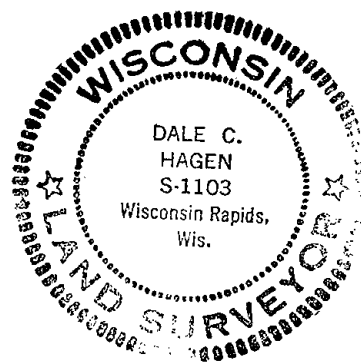
TOWN 18

RANGE 6



LOCATION
(Indicated by 'X')

SEAL:



BASIS FOR MONUMENT LOCATION

(Use reverse side if necessary)

Show info such as: History of corner, with reference to Vol. and pg. dates, surveyor; exact description of monument replaced; if location computed, by taped or EDM traverse; landowner remarks, etc.

Ran EDM/transit traverse around Section 25, and parts of 26 and 27 to determine search areas for investigation.

Excavation yielded no evidence of the original corner, but a 1-1/2 inch pinched iron pipe was found, accepted and remonumented.

- OK 9-12-78 RN-SS
- " 3-2-83 SS
- 1 NEW TIE 3-10-88 GR-SS
- 1- GONE, MON OK. 7-28-92 - JG-BS
- 3-GONE, 3-NEW, MON. OK 3-31-98 JG-SS
- OK, 12-13-02 - JG

CERTIFIED CORRECT:

Dale C. Hagen
Registered Land Surveyor

DATE: January 17, 1976

1-NEW 11-21-07 CS

TIE SKETCH

(Show at least four ties)

NOTE

Ties in trees to nail in disc.

