

23
SECTION

18
TOWN

06
RANGE

ADAMS COUNTY

COUNTY CORNER NO: 90

ROMPORTOL ID: 41806230020

PUBLIC LAND SURVEY MONUMENT RECORD

TYPE OF MONUMENT: HARRISON
ADAMS COUNTY COORDINATES, NAD 83 (2007)

N. 234869.228

E. 549363.864

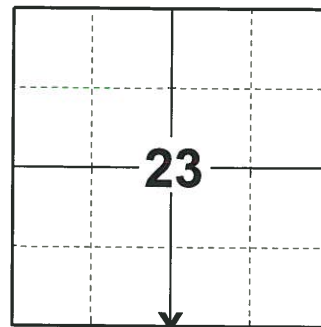
ELEVATION- _____ DATUM _____

FIELD WORK DATE: 06/11/2019

BASIS FOR MONUMENT LOCATION

1976 - PLS 1103 RAN EDM/TRANSIT TRAVERSE BETWEEN ADJACENT SECTION CORNERS TO DETERMINE SEARCH AREA. EXCAVATION YIELDED NO EVIDENCE OF THE ORIGINAL CORNER OR ANY REMONUMENTATION. SET HARRISON BY SINGLE PROPORTIONATE MEASURE BETWEEN ADJACENT SECTION CORNERS.

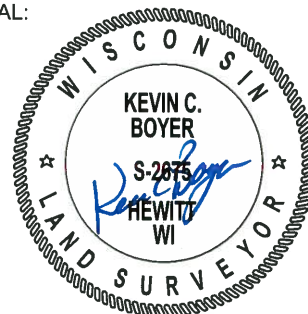
2019 - PLS 2675 FOUND A HARRISON MONUMENT 2" BELOW THE ROAD SURFACE, 1 TIE, 1 PROPERTY IRON AND 2 WITNESSES. THE MONUMENT AGREES WITH THE EXISTING TIE AND WITNESSES. ACCEPTED THE HARRISON MONUMENT AS THE CORNER LOCATION. SET 2 NEW TIES AND MEASURED TO THE TIES, PROPERTY IRON AND WITNESSES.



LOCATION

(INDICATE CORNER BY "X")

SEAL:



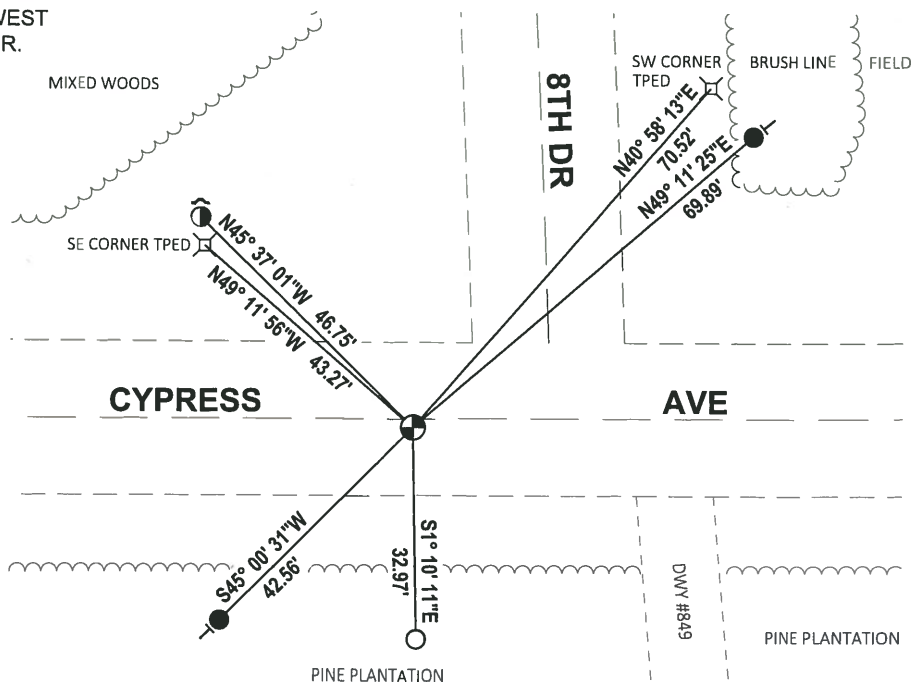
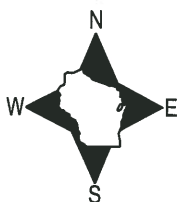
DATA SHOWN HERE ON THIS TIE SHEET IS CORRECT AND COMPLETE TO THE BEST OF MY KNOWLEDGE AND BELIEF.

PROFESSIONAL LAND SURVEYOR

DATE 8/2/19

TIE SKETCH

NOTE: THE CORNER FALLS 1'± SOUTH OF THE CENTERLINE OF CYPRESS AVE AND 22'± WEST OF THE EXTENDED CENTERLINE OF 8TH DR.



- SET 3/4" x 18" IRON REBAR, 1.50#/FT
- FOUND 3/4" IRON ROD
- ⊙ FOUND 5/8" IRON ROD
- ⊕ FOUND HARRISON MONUMENT
- ↗ STEEL FENCE POST
- ↖ VINYL "T" POST

ADAMS COUNTY

Survey Monument Record

TYPE OF MONUMENT: Harrison Monument

STATE PLANE COORDINATES: N _____

E _____

ELEVATION — M.S.L. DATUM: _____

THETA ANGLE: _____

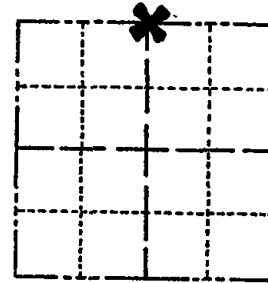
FIELD BOOK: _____ PAGE _____

CORNER NO. 944

SECTION 26

TOWN 18

RANGE 6



LOCATION (Indicated by 'X')



BASIS FOR MONUMENT LOCATION

(Use reverse side if necessary)

Show info such as: History of corner, with reference to Vol. and pg, dates, surveyor; exact description of monument replaced; if location computed, by taped or EDM traverse; landowner remarks, etc.

Ran EDM/transit traverse between adjacent section corners to determine search area.

Excavation yielded no evidence of the original corner or any remonumentation.

Set corner by single proportionate measure between adjacent section corners.

SEAL:



- OK 9-12-78 RN-SS
- " 3-2-83 SS
- " 2-12-88 GR-SS
- 2-NEW, 1-GONE, MON OK - 7-28-92, JG-BS
- 1-GONE, 1-NEW, 1-22-98 - JG
- OK, 12-16-02 - JG
- 1-GONE, 1-NEW 11-21-07 CS

CERTIFIED CORRECT:

Dale C. Hagen
Registered Land Surveyor

DATE: January 17, 1976

TIE SKETCH

(Show at least four ties)

NOTE:

Ties in trees to nail in disc.

