

23
SECTION

18
TOWN

06
RANGE

ADAMS COUNTY

COUNTY CORNER NO: 91

ROMPORTOL ID: 41806230000

PUBLIC LAND SURVEY MONUMENT RECORD

TYPE OF MONUMENT: HARRISON
ADAMS COUNTY COORDINATES, NAD 83 (2007)

N. 234906.878

E. 552006.577

ELEVATION- _____ DATUM _____

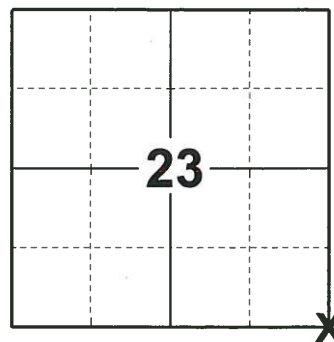
FIELD WORK DATE: 06/11/2019

BASIS FOR MONUMENT LOCATION

1976 - PLS 1103 RAN EDM/TRANSIT TRAVERSE AROUND SECTION 25 AND TO ADJACENT SECTION CORNERS, TO DETERMINE SEARCH AREAS FOR INVESTIGATION. EXCAVATION YIELDED NO EVIDENCE OF THE ORIGINAL CORNER, BUT A 1-1/2" PINCHED PIPE WAS FOUND AND ACCEPTED AS THE CORNER, AND SUBSEQUENTLY REMONUMENTED WITH A HARRISON.

2013 - PLS 1478 REDREW TIE SHEET.

2019 - PLS 2675 FOUND A HARRISON MONUMENT 2" BELOW THE ROAD SURFACE AND 2 WITNESSES. THE MONUMENT AGREES WITH THE EXISTING WITNESSES WHEN TAPPED. ACCEPTED THE HARRISON MONUMENT AS THE CORNER LOCATION. SET 4 NEW TIES AND MEASURED TO THE TIES AND WITNESSES.



LOCATION

(INDICATE CORNER BY "X")

SEAL:



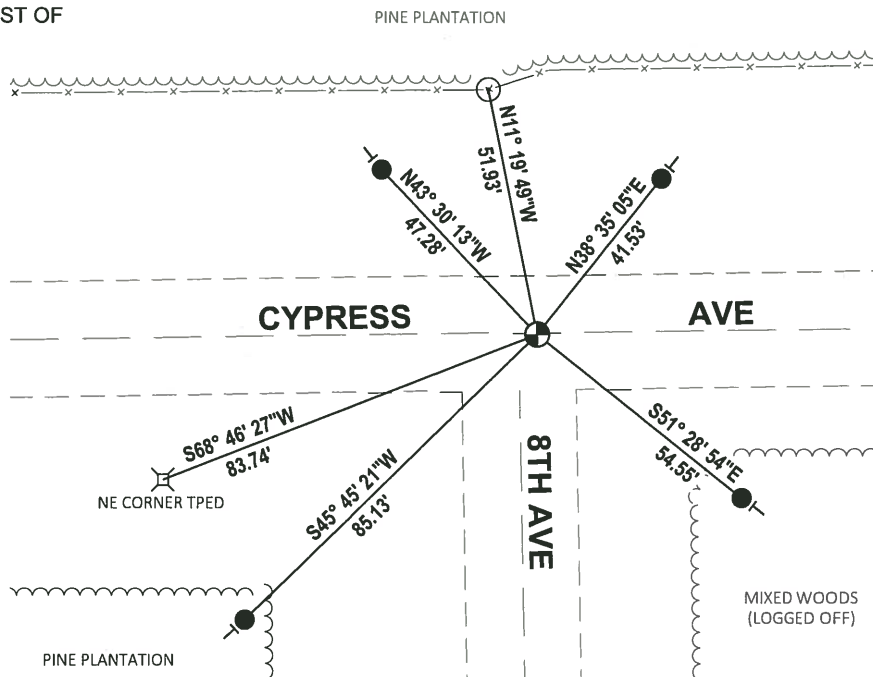
DATA SHOWN HERE ON THIS TIE SHEET IS CORRECT AND COMPLETE TO THE BEST OF MY KNOWLEDGE AND BELIEF.

PROFESSIONAL LAND SURVEYOR

DATE 8/2/19

TIE SKETCH

NOTE: THE CORNER FALLS 0.5'± SOUTH OF THE CENTERLINE OF CYPRESS AVE AND 4'± EAST OF THE EXTENDED CENTERLINE OF 8TH AVE.



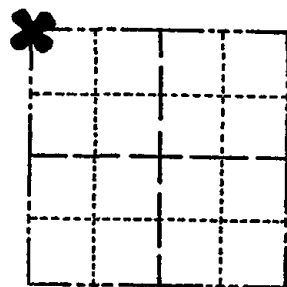
- SET 3/4" x 18" IRON REBAR, 1.50#/FT
- ⊙ FOUND HARRISON MONUMENT
- WITNESS FENCE POST
- ┌ VINYL "T" POST

ADAMS COUNTY

Survey Monument Record

TYPE OF MONUMENT: Standard Harrison
 STATE PLANE COORDINATES: N _____
 E _____
 ELEVATION — M.S.L. DATUM: _____
 THETA ANGLE: _____
 FIELD BOOK: _____ PAGE _____

CORNER NO. 938 ⁽⁹¹⁾
 SECTION 25
 TOWN 18
 RANGE 6



LOCATION
(Indicated by 'X')

SEAL:



BASIS FOR MONUMENT LOCATION

(Use reverse side if necessary)

Show info such as: History of corner, with reference to Vol. and pg. dates, surveyor; exact description of monument replaced; if location computed, by taped or EDM traverse; landowner remarks, etc.

Ran EDM/transit traverse around Section 25 and to adjacent section corners, to determine search areas for investigation.

Excavation yielded no evidence of the original corner, but a 1-1/2 inch pinched pipe was found and accepted as the corner, and subsequently remonumented.

- OK 9-12-78 RN-SS
- " 3-2-83 SS
- " 2-12-88 GR-SS
- 3-NEW, 3-GONE MON OK, 7-28-92-JG-BS
- OK-1-22-98-JG
- OK, 12-16-02-JG
- OK 11-21-07-ES

CERTIFIED CORRECT

Dale C. Hagen
Registered Land Surveyor

DATE: January 17, 1976

TIE SKETCH

(Show at least four ties)

NOTE

Ties in trees to nail in disc.

