

PUBLIC LAND SURVEY MONUMENT RECORD

TYPE OF MONUMENT: HARRISON
 ADAMS COUNTY COORDINATES, NAD 83 (2007)

N. 234936.709

E. 554665.471

ELEVATION- - - - - DATUM - - - - -

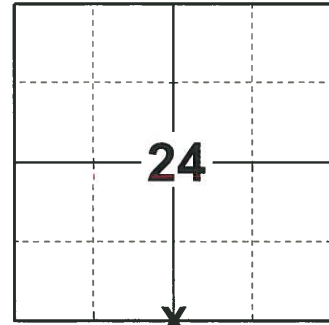
FIELD WORK DATE: 06/11/2019

BASIS FOR MONUMENT LOCATION

1975 - PLS 878 EXCAVATED WITH BACKHOE. FOUND 6"X12"X16" SANDSTONE. LOWERED STONE AND SET HARRISON ON TOP. STONE OBVIOUSLY DUG IN, BUT HAVE NO RECORD OF RESURVEY. LOCATION VERIFIED BY EDM TRAVERSE OF ENTIRE SECTION.

2013 - PLS 1478 REDREW TIE SHEET.

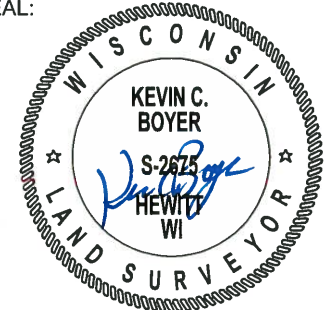
2019 - PLS 2675 FOUND A HARRISON MONUMENT 4" BELOW THE ROAD SURFACE, 1 TIE AND 3 WITNESSES. THE MONUMENT AGREES WITH THE EXISTING TIE AND WITNESSES. ACCEPTED THE HARRISON MONUMENT AS THE CORNER LOCATION. SET 3 NEW TIES AND MEASURED TO THE TIES AND WITNESSES.



LOCATION

(INDICATE CORNER BY "X")

SEAL:



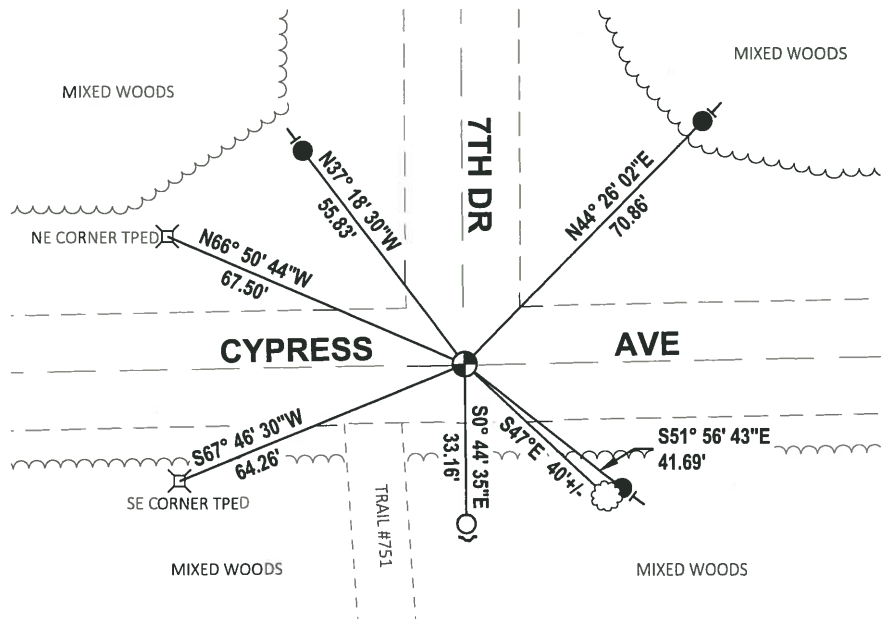
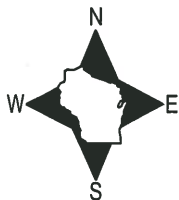
DATA SHOWN HERE ON THIS TIE SHEET IS CORRECT AND COMPLETE TO THE BEST OF MY KNOWLEDGE AND BELIEF.

PROFESSIONAL LAND SURVEYOR

DATE 8/2/19

TIE SKETCH

NOTE: THE CORNER FALLS 0.5'± NORTH OF THE CENTERLINE OF CYPRESS AVE AND 0.5'± EAST OF THE EXTENDED CENTERLINE OF 7TH DR.



- SET 3/4" x 18" IRON REBAR, 1.50#/FT
- FOUND 3/4" IRON ROD
- ⊕ FOUND HARRISON MONUMENT
- ~ STEEL FENCE POST
- VINYL "T" POST
- ☼ WITNESS TREE

ADAMS COUNTY

Survey Monument Record

TYPE OF MONUMENT: STANDARD HARRISON

STATE PLANE COORDINATES: N _____
E _____

ELEVATION — M.S.L. DATUM: _____

THETA ANGLE: _____

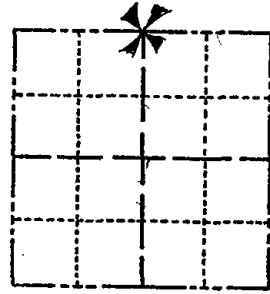
FIELD BOOK: 101 PAGE 35

CORNER NO. 872 ⁽⁹²⁾

SECTION 25

TOWN 18 N

RANGE 6 E



LOCATION
(Indicated by 'X')

SEAL:



BASIS FOR MONUMENT LOCATION

(Use reverse side if necessary)

Show info such as: History of corner, with reference to Vol. and pg, dates, surveyor; exact description of monument replaced; if location computed, by taped or EDM traverse; landowner remarks, etc.

Excavated with backhoe. Found 6"x12"x16" sandstone. Lowered stone and set Harrison on top. Stone obviously dug in, but have no record of resurvey. Location verified by EDM traverse of entire section.

OK 9-12-78 RN-SS

" 3-2-83 SS

" 2-12-88 GR-SS

" 7-29-92 JG-BS

1-GONE, 1-22-98 - JG

1-NEW, MON. OL 12-16-02 - JG

OK 11-21-07 CS-SS

CERTIFIED CORRECT:

Anthony B. Kiedrowski
Registered Land Surveyor

DATE: 010/12/75

TIE SKETCH

(Show at least four ties)

