

29
SECTION

18
TOWN

06
RANGE

ADAMS COUNTY

COUNTY CORNER NO: 96

ROMPORTOL ID: 41806292000

PUBLIC LAND SURVEY MONUMENT RECORD

TYPE OF MONUMENT: HARRISON
ADAMS COUNTY COORDINATES, NAD 83 (2007)

N. 232165.866

E. 536273.754

ELEVATION- _____ DATUM _____

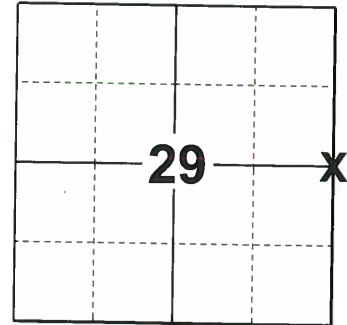
FIELD WORK DATE: 07/02/2019

BASIS FOR MONUMENT LOCATION

1974 - PLS 1103 SET HARRISON EQUIDISTANT AND ON LINE BETWEEN ADJACENT SECTION CORNERS.

2013 - PLS 1478 REDREW TIE SHEET.

2019 - PLS 2675 FOUND A HARRISON MONUMENT FLUSH WITH THE GROUND SURFACE, 1 TIE AND 1 WITNESS TREE. THE MONUMENT AGREES WITH THE EXISTING TIE AND WITNESS TREE. ACCEPTED THE HARRISON MONUMENT AS THE CORNER LOCATION. SET 4 NEW TIES AND MEASURED TO THE TIES AND WITNESS TREE.



LOCATION

(INDICATE CORNER BY "X")

SEAL:



DATA SHOWN HERE ON THIS TIE SHEET IS CORRECT AND COMPLETE TO THE BEST OF MY KNOWLEDGE AND BELIEF.

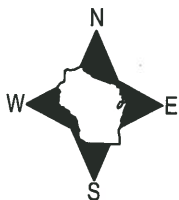
PROFESSIONAL LAND SURVEYOR

DATE 8/2/19

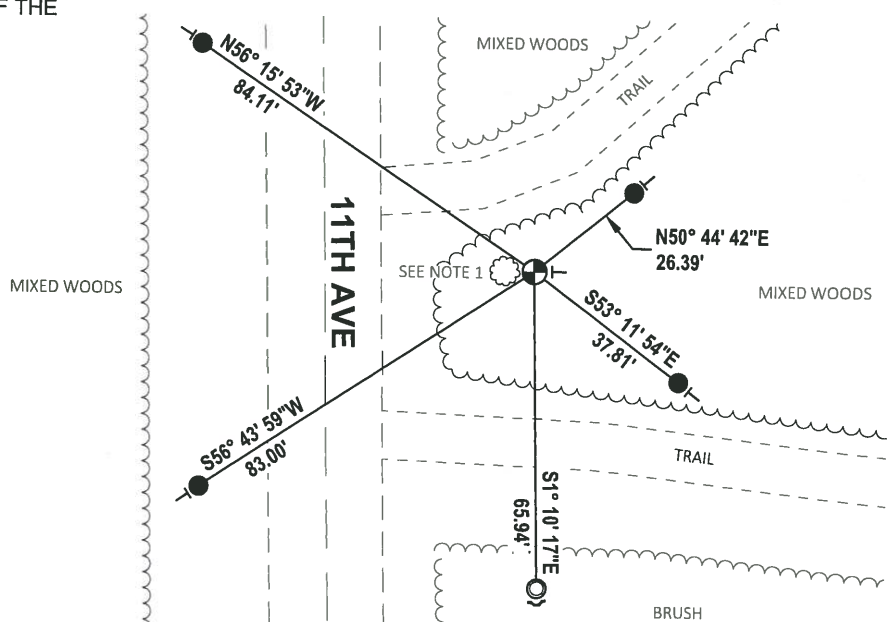
TIE SKETCH

NOTE 1: THE WITNESS TREE IS S86°W, 2'± FROM THE CORNER LOCATION.

NOTE 2: THE CORNER FALLS 44'± EAST OF THE CENTERLINE OF 11TH AVE.



- SET 3/4" x 18" IRON REBAR, 1.50#/FT
- FOUND 1-1/4" O.D. IRON PIPE
- ⊕ FOUND HARRISON MONUMENT
- ┌ STEEL FENCE POST
- └ VINYL "T" POST
- ☼ WITNESS TREE



ADAMS COUNTY

Survey Monument Record

TYPE OF MONUMENT: 30" Harrison standard

STATE PLANE COORDINATES: N _____

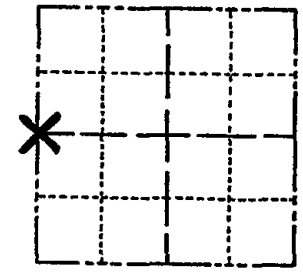
E _____

ELEVATION — M.S.L. DATUM: _____

THETA ANGLE: _____

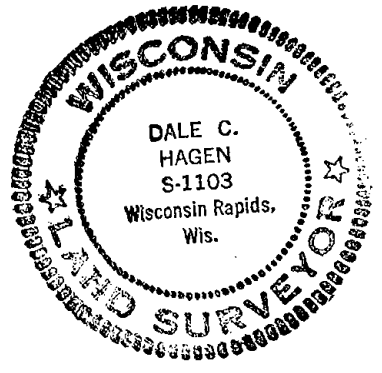
FIELD BOOK: _____ PAGE _____

CORNER NO. 558⁹⁶
SECTION 28
TOWN 18
RANGE 6



LOCATION
(Indicated by 'X')

SEAL:



BASIS FOR MONUMENT LOCATION

(Use reverse side if necessary)

Show info such as: History of corner, with reference to Vol. and pg, dates, surveyor; exact description of monument replaced; if location computed, by taped or EDM traverse; landowner remarks, etc.

Set equidistant and on line between adjacent section corners.

- OK 7-18-78 PK-SS
- " 3-2-83 SS
- " 2-23-88 GR-SS
- " 7-28-92 JG-B5
- OK 1-22-98-JG
- 1-GONE, 1-NEW, Mod. OK, 12-13-02-JG
- NEW 11-21-07 CS, SS

CERTIFIED CORRECT:

Dale C. Hagen
Registered Land Surveyor

DATE: 10-28-74

TIE SKETCH

(Show at least four ties)

