

PUBLIC LAND SURVEY MONUMENT RECORD

TYPE OF MONUMENT: HARRISON
 ADAMS COUNTY COORDINATES, NAD 83 (2007)

N. 229538.916

E. 536329.041

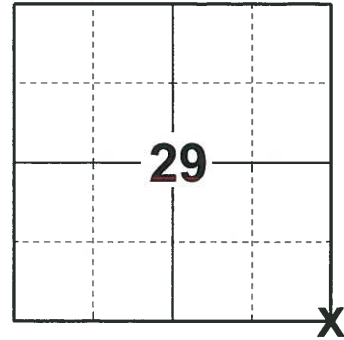
ELEVATION- _____ DATUM _____

FIELD WORK DATE: 07/01/2019

BASIS FOR MONUMENT LOCATION

1973 - PLS 878 FOUND RAILROAD SPIKE SET BY S. MULLEN FROM INFORMATION ON TOWN HALL DEED DESCRIPTION. REPLACED WITH HARRISON MONUMENT.

2019 - PLS 2675 FOUND A HARRISON MONUMENT IN THE ROAD SURFACE AND 1 WITNESS TREE. THE MONUMENT AGREES WITH THE EXISTING WITNESS TREE. ACCEPTED THE HARRISON MONUMENT AS THE CORNER LOCATION. SET 4 NEW TIES AND MEASURED TO THE TIES AND WITNESS.



LOCATION

(INDICATE CORNER BY "X")

SEAL:



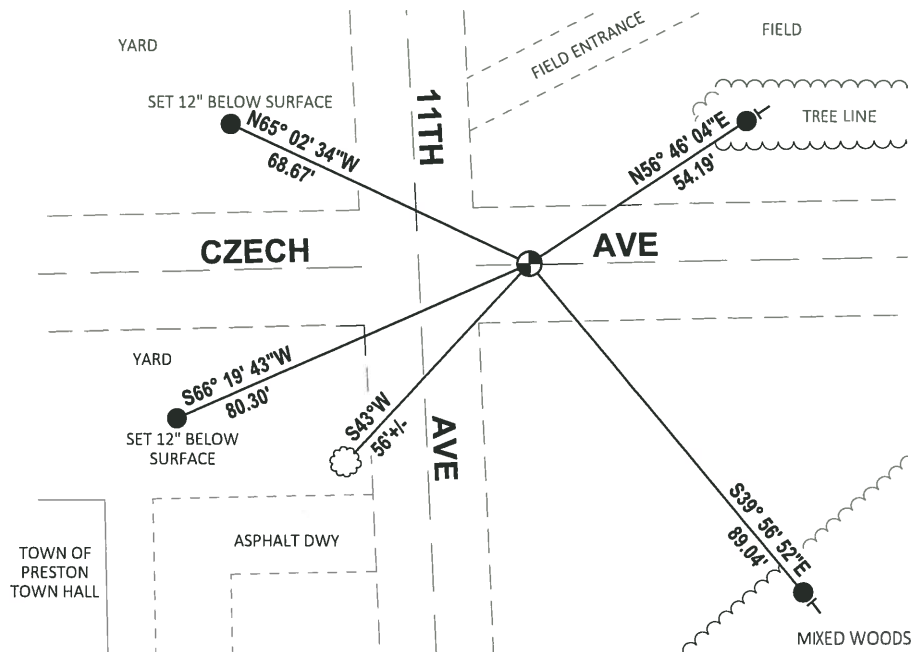
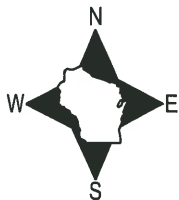
DATA SHOWN HERE ON THIS TIE SHEET IS CORRECT AND COMPLETE TO THE BEST OF MY KNOWLEDGE AND BELIEF.

PROFESSIONAL LAND SURVEYOR

DATE 8/2/19

- TIE SKETCH

NOTE: THE CORNER FALLS 0.5'± NORTH OF THE CENTERLINE OF CZECH AVE AND 23'± EAST OF THE CENTERLINE OF 11TH AVE.



- SET 3/4" x 18" IRON REBAR, 1.50#/FT
- ⊕ FOUND HARRISON MONUMENT
- ┆ VINYL "T" POST
- ⊗ WITNESS TREE

ADAMS COUNTY

CORNER NO. 154

Survey Monument Record

SECTION 32

TYPE OF MONUMENT: 30" HARRISON - 8-16-00 RESET HAR.

TOWN 18

STATE PLANE COORDINATES: N _____

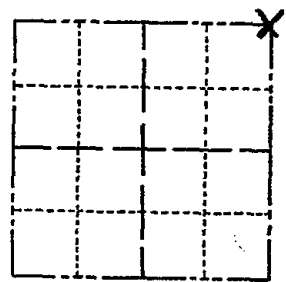
RANGE 6

E _____

ELEVATION — M.S.L. DATUM: _____

THETA ANGLE: _____

FIELD BOOK: 103 PAGE 145



LOCATION
(Indicated by 'X')

SEAL:

BASIS FOR MONUMENT LOCATION

(Use reverse side if necessary)

Show info such as: History of corner, with reference to Vol. and pg, dates, surveyor; exact description of monument replaced; if location computed, by taped or EDM traverse; landowner remarks, etc.



Found RR spike and set monument

July 24, 1972

Anthony B. Kiedrowski R.L.S. 878

RR Spike set by Sam Mullen
from information on Town
Hall deed description.

- OK 7-18-78 PK-SS
- " 3-2-83 SS
- " 2-23-88 GR-SS
- " 7-28-92 JG-B5
- OK 1-22-98 JG
- OK 12-13-02 JG
- OK 11-21-07 CS

CERTIFIED CORRECT:

Anthony B. Kiedrowski
Registered Land Surveyor

DATE: 2-22-73

TIE SKETCH

(Show at least four ties)

