

PUBLIC LAND SURVEY MONUMENT RECORD

TYPE OF MONUMENT: HARRISON
 ADAMS COUNTY COORDINATES, NAD 83 (2007)

N. 229587.442

E. 541642.323

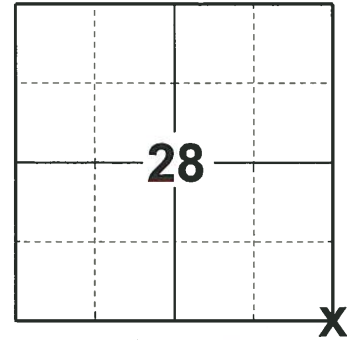
ELEVATION- _____ DATUM _____

FIELD WORK DATE: 07/01/2019

BASIS FOR MONUMENT LOCATION

1972 - PLS 981 FOUND STONE AND REPLACED WITH A HARRISON MONUMENT.

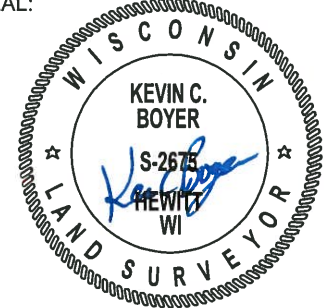
2019 - PLS 2675 FOUND A HARRISON MONUMENT 3" BELOW THE ROAD SURFACE AND 3 WITNESSES. THE MONUMENT AGREES WITH THE EXISTING WITNESSES. ACCEPTED THE HARRISON MONUMENT AS THE CORNER LOCATION. SET 4 NEW TIES AND MEASURED TO THE TIES AND WITNESSES.



LOCATION

(INDICATE CORNER BY "X")

SEAL:



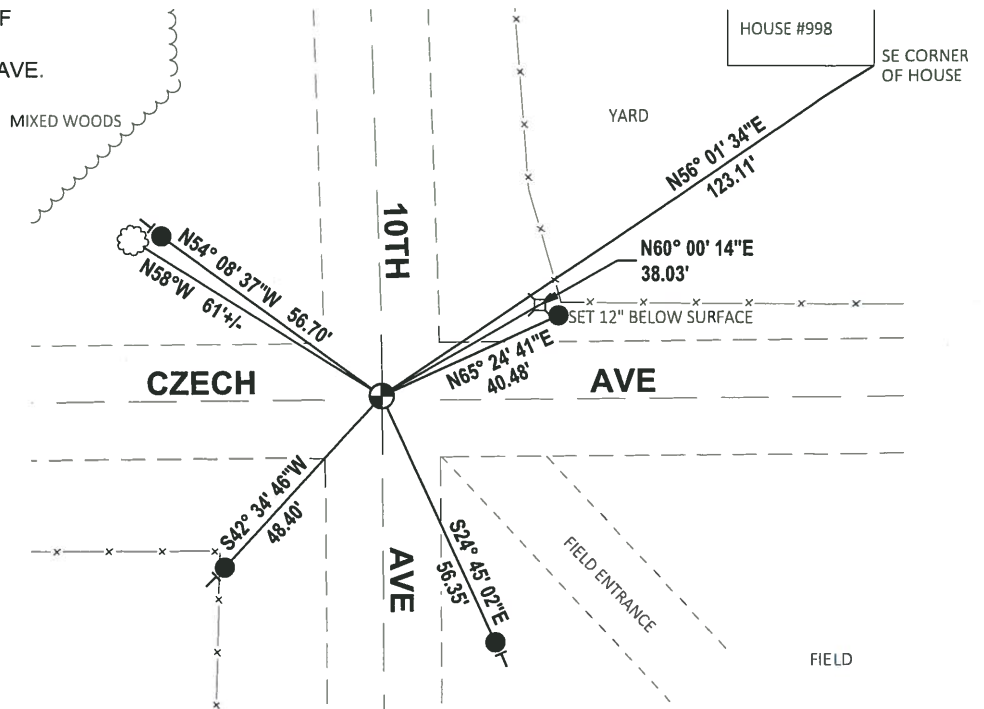
DATA SHOWN HERE ON THIS TIE SHEET IS CORRECT AND COMPLETE TO THE BEST OF MY KNOWLEDGE AND BELIEF.

PROFESSIONAL LAND SURVEYOR

DATE 8/2/19

TIE SKETCH

NOTE: THE CORNER FALLS 0.5'± WEST OF THE CENTERLINE OF 10TH AVE AND 1'± NORTH OF THE CENTERLINE OF CZECH AVE.



- SET 3/4" x 18" IRON REBAR, 1.50#/FT
- ⊙ FOUND HARRISON MONUMENT
- ⌵ WITNESS SW CORNER TPED
- VINYL "T" POST
- ⊙ WITNESS TREE

ADAMS COUNTY

Survey Monument Record

TYPE OF MONUMENT: 30" HARRISON

STATE PLANE COORDINATES: N _____

E _____

ELEVATION — M.S.L. DATUM: _____

THETA ANGLE: _____

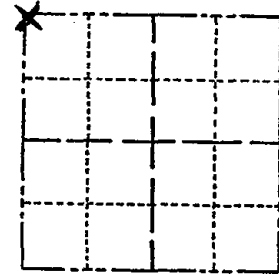
FIELD BOOK: _____ PAGE _____

CORNER NO. 108

SECTION 34

TOWN 18

RANGE 6



LOCATION
(Indicated by 'X')

SEAL:

BASIS FOR MONUMENT LOCATION

(Use reverse side if necessary)

Show info such as: History of corner, with reference to Vol. and pg, dates, surveyor; exact description of monument replaced; if location computed, by taped or EDM traverse; landowner remarks, etc.

Set by Sam Mullen at stone found.
1972

OK 7-18-78 PR-SS
 3-2-83 GR-SS OK
 3-10-88 GR-SS 2 NEW TIES
 7-28-92 JG-BB OK.
 1-22-98 JG - OK
 1-GONE, 4-NEW, MON. OK 12-13-02-JG
 1-GONE 11-21-07 CS

CERTIFIED CORRECT:

Registered Land Surveyor

DATE: _____

TIE SKETCH

(Show at least four ties)

