

25
SECTION

18
TOWN

06
RANGE

ADAMS COUNTY

COUNTY CORNER NO: 112

ROMPORTOL ID: 41806250020

PUBLIC LAND SURVEY MONUMENT RECORD

TYPE OF MONUMENT: HARRISON (BROKEN-TOP)
ADAMS COUNTY COORDINATES, NAD 83 (2007)

N. 229664.286

E. 554736.830

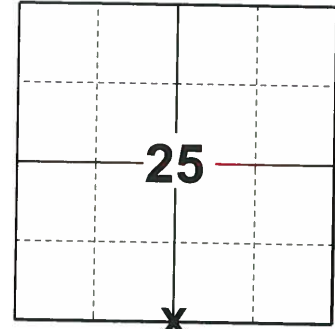
ELEVATION- _____ DATUM _____

FIELD WORK DATE: 06/26/2019

BASIS FOR MONUMENT LOCATION

1976 - PLS 1103 RAN EDM/TRANSIT AROUND 25 AND TO ADJACENT CORNERS TO DETERMINE SEARCH AREAS. EXCAVATION YIELDED NO EVIDENCE OF THE ORIGINAL CORNER OR ANY REMONUMENTATION. SET HARRISON MONUMENT EQUIDISTANT AND ON LINE BETWEEN THE SOUTHEAST AND SOUTHWEST CORNERS OF SECTION 25.

2019 - PLS 2675 FOUND HARRISON BROKEN-TOP 12" BELOW THE ROAD SURFACE, 1 TIE AND 2 WITNESSES. THE MONUMENT AGREES WITH THE EXISTING TIE AND WITNESSES. ACCEPTED THE HARRISON BROKEN TIP AS THE CORNER LOCATION. SET 3 NEW TIES AND MEASURED TO THE EXISTING TIES. AND WITNESSES.



LOCATION

(INDICATE CORNER BY "X")

SEAL:



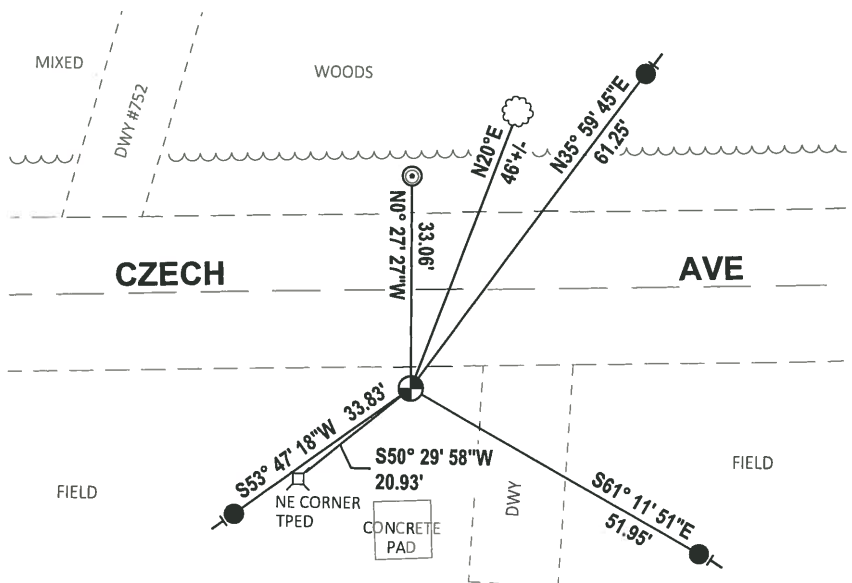
DATA SHOWN HERE ON THIS TIE SHEET IS CORRECT AND COMPLETE TO THE BEST OF MY KNOWLEDGE AND BELIEF.

PROFESSIONAL LAND SURVEYOR

DATE 8/2/19

TIE SKETCH

NOTE: THE CORNER FALLS 15.5'± SOUTH OF THE CENTERLINE OF CZECH AVE.



- SET 3/4" x 18" IRON REBAR, 1.50#/FT
- ⊙ FOUND 2-3/8" O.D. IRON PIPE
- ⊕ FOUND HARRISON MONUMENT (BROKEN-TOP)
- VINYL "T" POST
- ☁ WITNESS TREE

