

25
SECTION

18
TOWN

06
RANGE

ADAMS COUNTY

COUNTY CORNER NO: 113

ROMPORTOL ID: 41806250000

PUBLIC LAND SURVEY MONUMENT RECORD

TYPE OF MONUMENT: HARRISON (BROKEN-TOP)
ADAMS COUNTY COORDINATES, NAD 83 (2007)

N. 229690.526

E. 557382.326

ELEVATION- - - DATUM - -

FIELD WORK DATE: 01/11/2018

BASIS FOR MONUMENT LOCATION

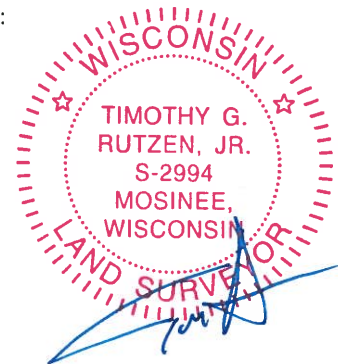
1976 - PLS 1103 RAN AN EDM/TRANSIT TRAVERSE AROUND SECTION 25 AND TO ADJACENT CORNERS. EXCAVATION WITH A BACKHOE YIELDED NO EVIDENCE OF THE ORIGINAL CORNER OR ANY REMONUMENTATION. SET THE CORNER BY PROPORTIONATE MEASUREMENT BETWEEN THE NORTHEAST CORNER OF SECTION 25 AND THE EAST QUARTER CORNER OF SECTION 1-17-6. SET A HARRISON MONUMENT AT THE CORNER LOCATION AND TIED OUT.

2018 - PLS 2994 FOUND A HARRISON MONUMENT WITH A BROKEN-TOP 8" BELOW THE ROAD SURFACE AND 1 TIE. THE MONUMENT AGREES WITH THE EXISTING TIE. ACCEPTED THE HARRISON MONUMENT WITH A BROKEN-TOP AS THE CORNER LOCATION. SET 3 NEW TIES AND MEASURED TO THE TIES.



LOCATION
(INDICATE CORNER BY "X")

SEAL:



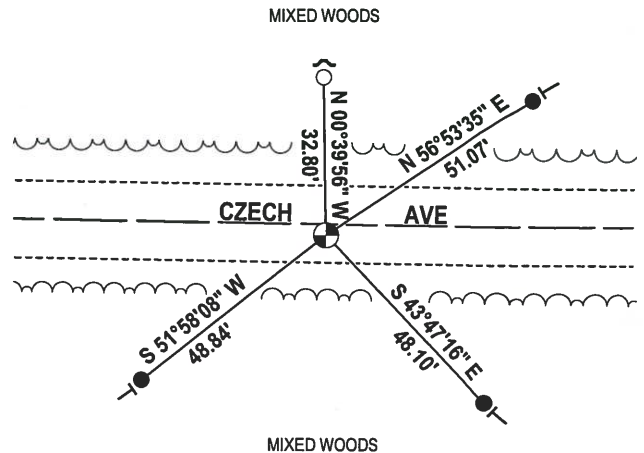
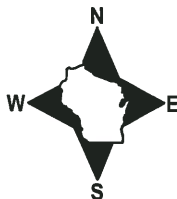
DATA SHOWN HERE ON THIS TIE SHEET IS CORRECT AND COMPLETE TO THE BEST OF MY KNOWLEDGE AND BELIEF.

PROFESSIONAL LAND SURVEYOR

DATE 3-1-18

- TIE SKETCH

NOTE: THE CORNER FALLS 2± SOUTH OF THE CENTERLINE OF CZECH AVE.



- 3/4" x 18" IRON REBAR SET, 1.50#/FT
- 3/4" IRON ROD FOUND
- ⊕ HARRISON (BROKEN-TOP) FOUND
- ↙ STEEL FENCE POST
- VINYL "T" POST

ADAMS COUNTY

Survey Monument Record

TYPE OF MONUMENT: Harrison Monument

STATE PLANE COORDINATES: N _____

E _____

ELEVATION — M.S.L. DATUM: _____

THETA ANGLE: _____

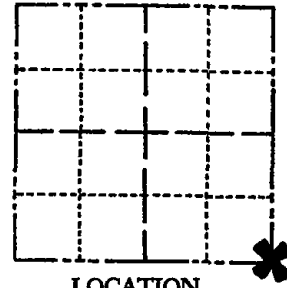
FIELD BOOK: _____ PAGE _____

CORNER NO. 940

SECTION 25

TOWN 18

RANGE 6



LOCATION
(Indicated by 'X')

BASIS FOR MONUMENT LOCATION

(Use reverse side if necessary)

Show info such as: History of corner, with reference to Vol. and pg. dates, surveyor; exact description of monument replaced; if location computed, by taped or EDM traverse; landowner remarks, etc.

SEAL:



Ran EDM/transit traverse around Section 25 and to adjacent corners.

Excavation with backhoe yielded no evidence of the original corner or any remonumentation.

Set corner by proportionate measure between the Northeast corner of Section 25 and the East Quarter corner of Section 1-17-6.

OK 9-12-78 RN-SS
 3-14-83 GR-SS 1 NEW TIE
 2-12-88 " " OK
 7-28-92 - JG-BS - OK
 OK-1-22-98-JG
 1-GONE, 1-NEW 12-16-02-JG

CERTIFIED CORRECT:

Dale C. Hagen
 Registered Land Surveyor

DATE: January 7, 1976

TIE SKETCH OK, 11-26-07-JG

(Show at least four ties)

NOTE:

Ties in trees to nail in disc.

