

PUBLIC LAND SURVEY MONUMENT RECORD

TYPE OF MONUMENT: HARRISON
 ADAMS COUNTY COORDINATES, NAD 83 (2007)

N. 226786.785

E. 525772.942

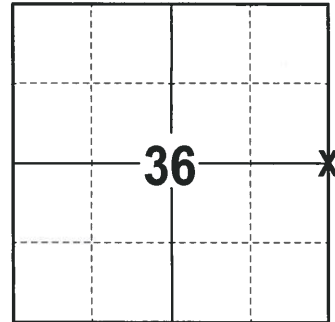
ELEVATION- DATUM

FIELD WORK DATE: 01/05/2018

BASIS FOR MONUMENT LOCATION

1982 - PLS 1167 TRAVERSED TO THE SEARCH AREA, FOUND STUMP AND REMAINS OF THE ORIGINAL BEARING TREE. SET THE CORNER FROM THE ORIGINAL NOTES OF BEARING DISTANCES FROM SAID TREE (STUMP). SET A HARRISON MONUMENT AT THE CORNER LOCATION AND TIED OUT.

2017 - PLS 2994 FOUND A HARRISON MONUMENT 6" ABOVE THE GROUND SURFACE AND 1 TIE. THE MONUMENT AGREES WITH THE EXISTING TIE. ACCEPTED THE HARRISON MONUMENT AS THE CORNER LOCATION. SET 3 NEW TIES AND MEASURED TO THE TIES.



LOCATION
 (INDICATE CORNER BY "X")

SEAL:



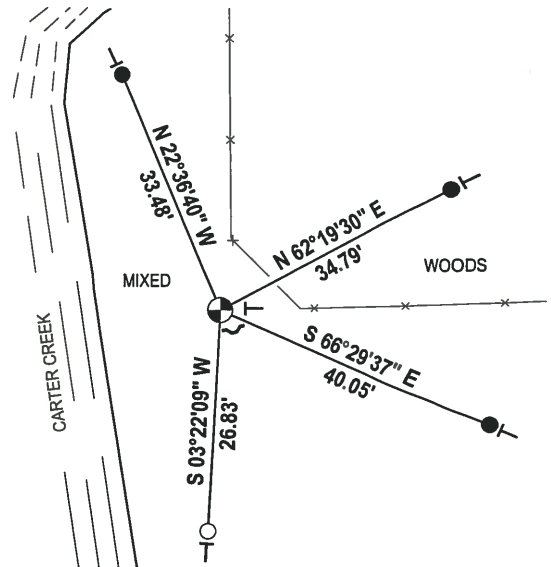
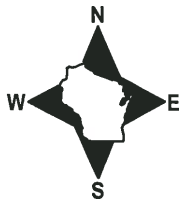
DATA SHOWN HERE ON THIS TIE SHEET IS CORRECT AND COMPLETE TO THE BEST OF MY KNOWLEDGE AND BELIEF.

PROFESSIONAL LAND SURVEYOR

DATE 2-2-18

- TIE SKETCH

NOTE: THE CORNER FALLS 23± EAST OF THE EDGE OF CARTER CREEK.

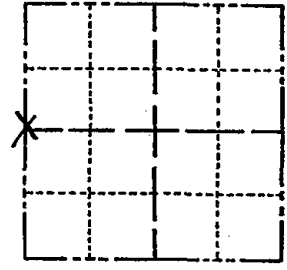


- 3/4" x 18" IRON REBAR SET, 1.50#/FT
- 1" O.D. IRON PIPE FOUND
- ⊙ HARRISON FOUND
- ↘ STEEL FENCE POST
- └ VINYL "T" POST

Government Land Corner Certificate

Adams County
 TYPE OF MONUMENT: HARRISON
 STATE PLANE COORDINATES: N _____
 E _____
 ELEVATION — M.S.L. DATUM: _____
 THETA ANGLE: _____
 FIELD BOOK: 66 PAGE _____
 DRAWN BY: BASLER

CORNER NO. 114
 SECTION 31
 TOWN 18
 RANGE 6E



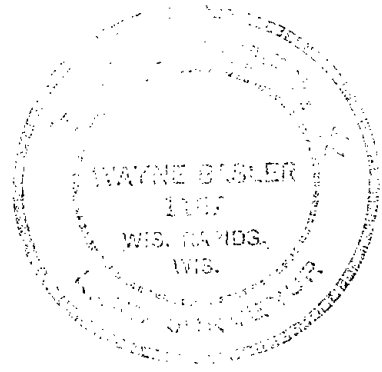
LOCATION
 (Indicated by 'X')

BASIS FOR MONUMENT LOCATION

Show info such as: History of corner, with reference to Vol. and pg., dates, surveyor; exact description of monument replaced; if location computed, by taped or EDM traverse; landowner remarks, etc. (Use reverse side if necessary)

Traversed to search area, found stump and remains of ORIGINAL BEARING TREE.
 Set corner from original notes of bearing and distance from said tree (stump).

SEAL:



DATA SHOWN HERE ON
 CERTIFIED CORRECT:

Wayne Basler
 Registered Land Surveyor

DATE: 4-19-82

TIE SKETCH

Show at least four ties, also fence lines, roads, topo, size and type of witness trees' and if off road - best way to arrive at corner.

