

33 SECTION 18 TOWN 06 RANGE

ADAMS COUNTY

COUNTY CORNER NO: 117
ROMPORTOL ID: 41806332000

PUBLIC LAND SURVEY MONUMENT RECORD

TYPE OF MONUMENT: HARRISON (BROKEN-TOP)
ADAMS COUNTY COORDINATES, NAD 83 (2007)

N. 226958.752

E. 541568.728

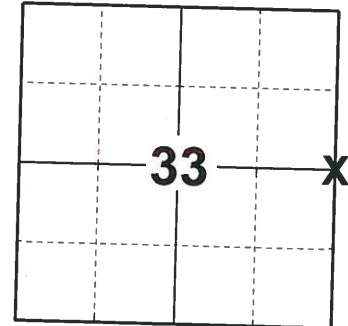
ELEVATION- _____ DATUM _____

FIELD WORK DATE: 07/02/2019

BASIS FOR MONUMENT LOCATION

1974 - PLS 1103 SET HARRISON EQUIDISTANT AND ON LINE BETWEEN ADJACENT SECTION CORNERS.

2019 - PLS 2675 FOUND A HARRISON MONUMENT WITH A BROKEN-TOP 12" BELOW THE GROUND SURFACE, 1 TIE AND 1 WITNESS. THE MONUMENT AGREES WITH THE EXISTING TIE AND WITNESS. ACCEPTED THE HARRISON MONUMENT WITH A BROKEN-TOP AS THE CORNER LOCATION. SET 3 NEW TIES AND MEASURED TO THE TIES AND WITNESS.



LOCATION
(INDICATE CORNER BY "X")

SEAL:



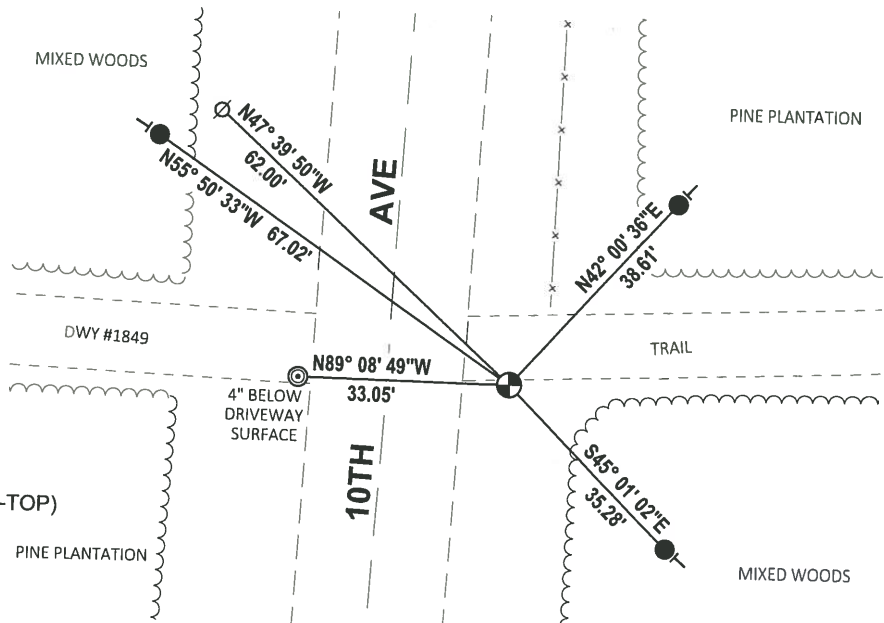
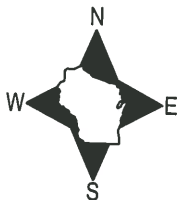
DATA SHOWN HERE ON THIS TIE SHEET IS CORRECT AND COMPLETE TO THE BEST OF MY KNOWLEDGE AND BELIEF.

PROFESSIONAL LAND SURVEYOR

DATE 8/2/19

TIE SKETCH

NOTE: THE CORNER FALLS 19'± EAST OF THE CENTERLINE OF 10TH AVE.



- SET 3/4" x 18" IRON REBAR, 1.50#/FT
- ⊙ FOUND 2-3/8" O.D. IRON PIPE
- ⊕ FOUND HARRISON MONUMENT (BROKEN-TOP)
- ⊘ WITNESS POWER POLE
- VINYL "T" POST

ADAMS COUNTY

Survey Monument Record

TYPE OF MONUMENT: 30" Harrison standard

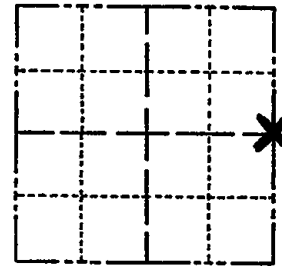
STATE PLANE COORDINATES: N _____
E _____

ELEVATION — M.S.L. DATUM: _____

THETA ANGLE: _____

FIELD BOOK: _____ PAGE _____

CORNER NO. 634 ⁽¹¹⁷⁾
SECTION 33
TOWN 18
RANGE 6



LOCATION
(Indicated by 'X')

SEAL:



BASIS FOR MONUMENT LOCATION

(Use reverse side if necessary)

Show info such as: History of corner, with reference to Vol. and pg, dates, surveyor; exact description of monument replaced; if location computed, by taped or EDM traverse; landowner remarks, etc.

Set equidistant and on line between adjacent section corners.

- OK 7-18-78 AK-55
- " 3-2-83 SS
- " 2-2-88 GR-55
- " 7-29-92 JG-RS
- 11 2-2-98-JG

CERTIFIED CORRECT:

Dale C. Hagen
Registered Land Surveyor

DATE: 10-28-74

TIE SKETCH OK 12-13-02-JG
OK 11-21-07 CS, SS
(Show at least four ties)

